

LOC/DME I-BYL <b>108.3</b> Chan <b>20</b>	APP CRS <b>200°</b>	Rwy Idg <b>5499</b> TDZE <b>1178</b> Apt Elev <b>1178</b>
---	------------------------	---

# LOC RWY 20

WILLIAMSBURG-WHITLEY COUNTY (BYL)

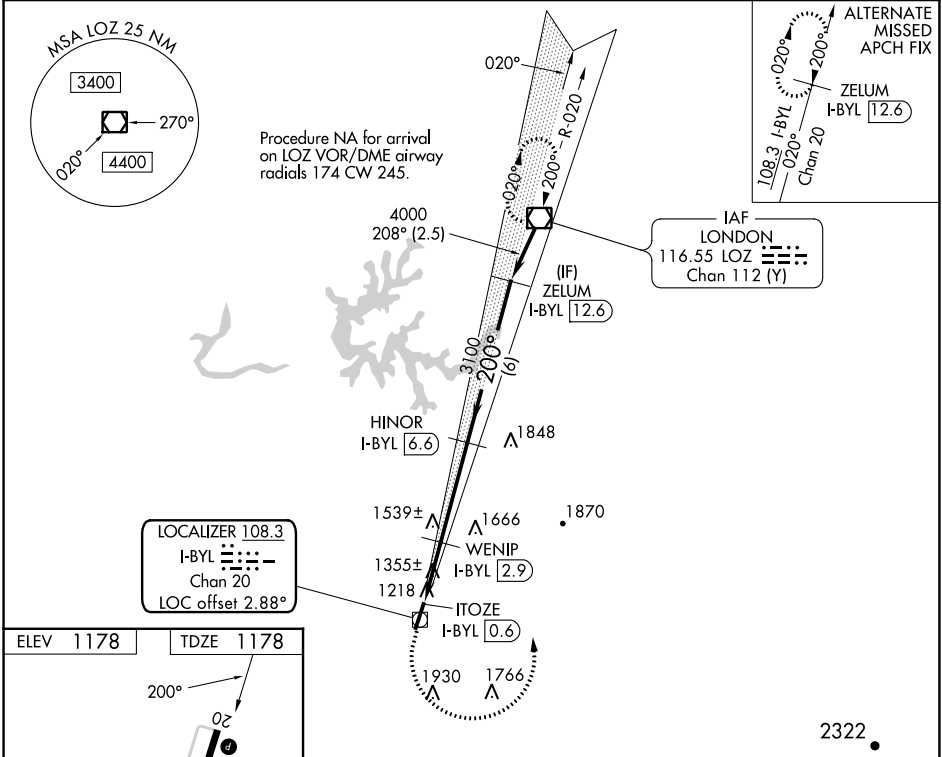
DME required.

**⚠** Rwy 20 helicopter visibility reduction below  $\frac{3}{4}$  SM NA. VDP NA when using London altimeter setting. When local altimeter setting not received, use London altimeter setting and increase all MDAs 60 feet and S-20 Cats C/D visibility  $\frac{1}{2}$  SM.

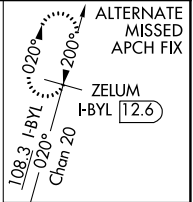
**⚠** -17°C

MISSED APPROACH: Climb to 1800 then climbing left turn to 4000 direct LOZ VOR/DME and hold.

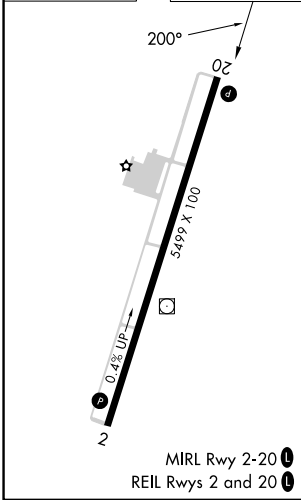
AWOS-3 <b>119.575</b>	INDIANAPOLIS CENTER <b>124.625 371.925</b>	UNICOM <b>122.7 (CTAF)</b>
--------------------------	---	-------------------------------



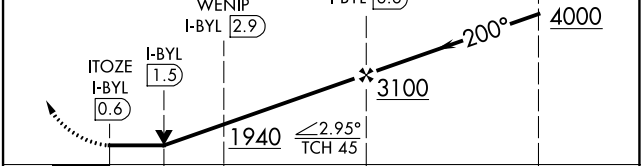
LOCALIZER 108.3  
I-BYL  
Chan 20  
LOC offset 2.88°



ELEV 1178	TDZE 1178
-----------	-----------



1800 4000 LOZ VGSI and descent angles not coincident (VGSI Angle 3.17/TCH 30).



	1 NM	1.3 NM	3.7 NM	6 NM
CATEGORY	A	B	C	D
S-20	1740-1	562 (600-1)	1740-1 $\frac{5}{8}$	562 (600-1 $\frac{5}{8}$ )
CIRCLING	1760-1 582 (600-1)	1860-1 682 (700-1)	2240-3 1062 (1100-3)	2260-3 1082 (1100-3)

# LOC RWY 20

SE-1, 26 DEC 2024 to 23 JAN 2025

SE-1, 26 DEC 2024 to 23 JAN 2025