

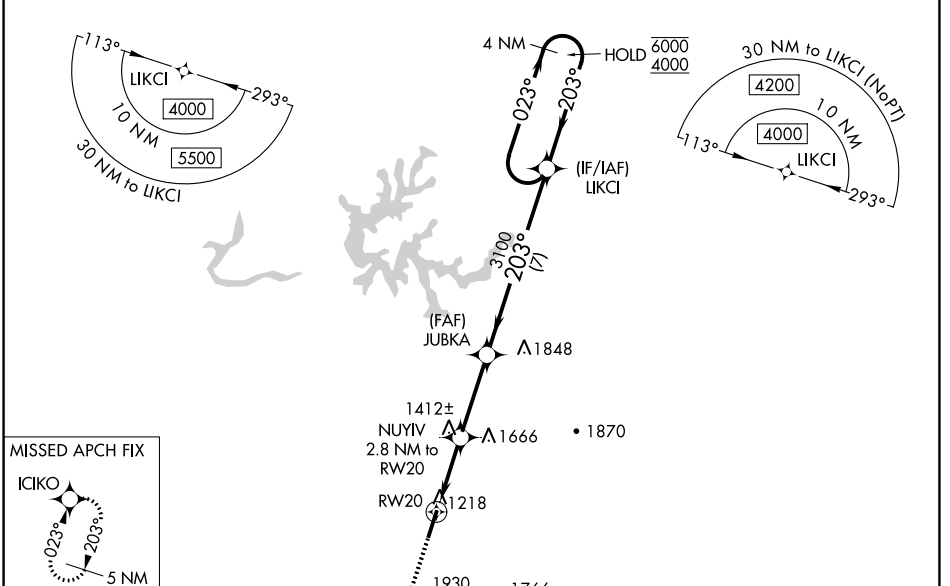
WAAS CH <b>70403</b> <b>W20A</b>	APP CRS <b>203°</b>	Rwy Idg TDZE Apt Elev	<b>5499</b> <b>1178</b> <b>1178</b>
--	------------------------	-----------------------------	---

# RNAV (GPS) RWY 20

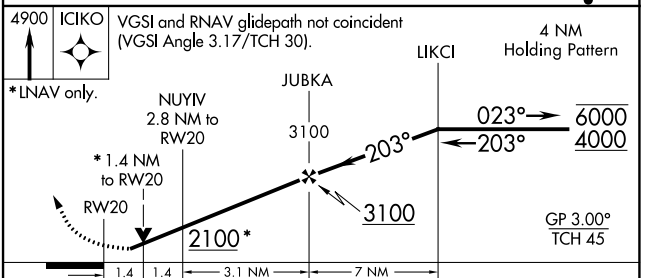
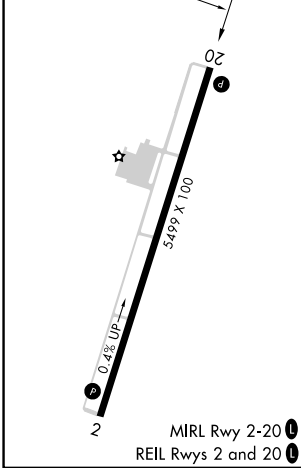
WILLIAMSBURG-WHITLEY COUNTY (BYL)

RNP APCH.		MISSED APPROACH: Climb to 4900 direct ICIKO and hold, continue climb-in-hold 4900.
<p>▼ ▲ Rwy 20 helicopter visibility reduction below 3/4 SM NA.          ✎ -17°C For uncompensated Baro-VNAV systems, LNAV/VNAV NA below -17°C or above 54°C.</p>		

AWOS-3 <b>119.575</b>	INDIANAPOLIS CENTER <b>124.625 371.925</b>	UNICOM <b>122.7 (CTAF) 0</b>
--------------------------	---	---------------------------------



ELEV 1178	TDZE 1178
-----------	-----------



CATEGORY	A	B	C	D
LPV DA		1651-1 <sup>3</sup> / <sub>8</sub>	473 (500-1 <sup>3</sup> / <sub>8</sub> )	
LNAV/VNAV DA		1670-1 <sup>5</sup> / <sub>8</sub>	492 (500-1 <sup>5</sup> / <sub>8</sub> )	
LNAV MDA	1680-1	502 (600-1)	1680-1 <sup>3</sup> / <sub>8</sub>	502 (600-1 <sup>3</sup> / <sub>8</sub> )
<input checked="" type="checkbox"/> CIRCLING	1760-1 582 (600-1)	1860-1 682 (700-1)	2240-3 1062 (1100-3)	2260-3 1082 (1100-3)

SE-1, 26 DEC 2024 to 23 JAN 2025

SE-1, 26 DEC 2024 to 23 JAN 2025