

WAAS CH <b>93514</b> <b>W27A</b>	APP CRS <b>272°</b>	Rwy Idg <b>3401</b> TDZE <b>238</b> Apt Elev <b>244</b>
--	------------------------	---

# RNAV (GPS) RWY 27

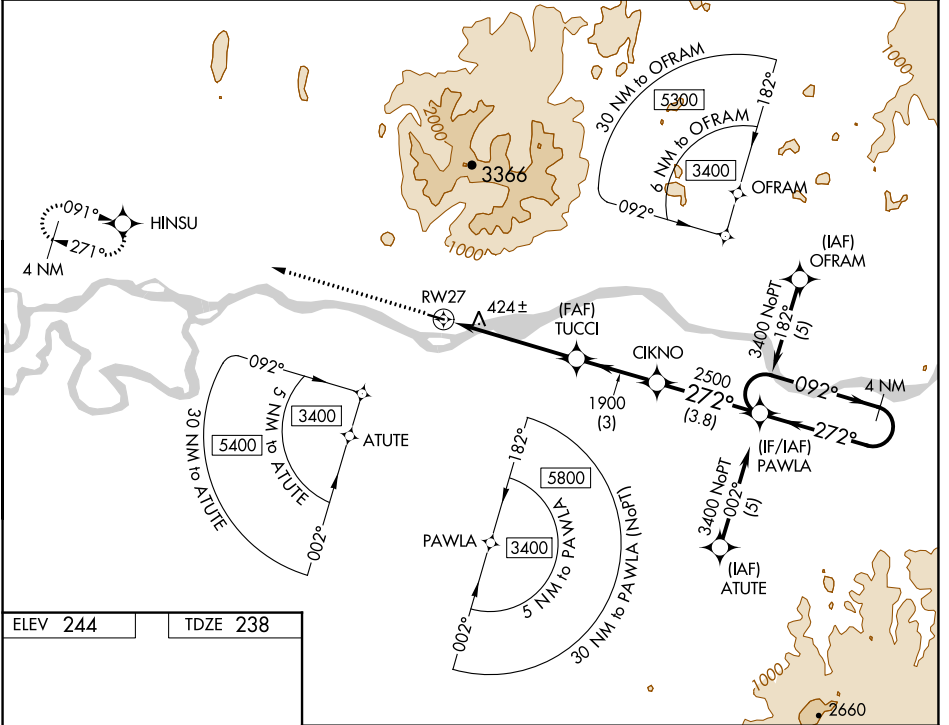
CHUATHBALUK (9A3) (PACH)

**⚠** NA  
**⚠** -31°C

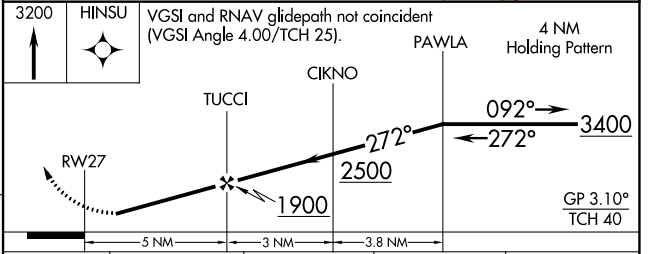
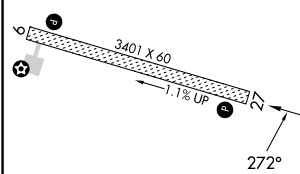
Circling NA north of Rwy 9-27. DME/DME RNP-0.3 NA. Visibility reduction by helicopters NA. Use Aniak altimeter setting; when not received, use Kalskag altimeter setting and increase all DA 58 feet and MDA 60 feet and increase LNAV and Circling Cats A and C visibility ¼ mile.

MISSED APPROACH: Climb to 3200 direct HINSU and hold.

ANCHORAGE CENTER <b>118.15 251.05</b>	CTAF <b>122.9</b>
--	----------------------



ELEV <b>244</b>	TDZE <b>238</b>
-----------------	-----------------



CATEGORY	A	B	C	D
LPV DA	759-2 521 (600-2)			NA
LNAV MDA	1100-1 862 (900-1)	1100-1¼ 862 (900-1¼)	1100-2½ 862 (900-2½)	NA
CIRCLING	1100-1 856 (900-1)	1100-1¼ 856 (900-1¼)	1100-2½ 856 (900-2½)	NA

AK, 26 DEC 2024 to 20 FEB 2025

AK, 26 DEC 2024 to 20 FEB 2025