

WAAS CH 63208 W18A	APP CRS 182°	Rwy Idg TDZE Apt Elev	3199 25 25
--	------------------------	-----------------------------	---------------------------------------

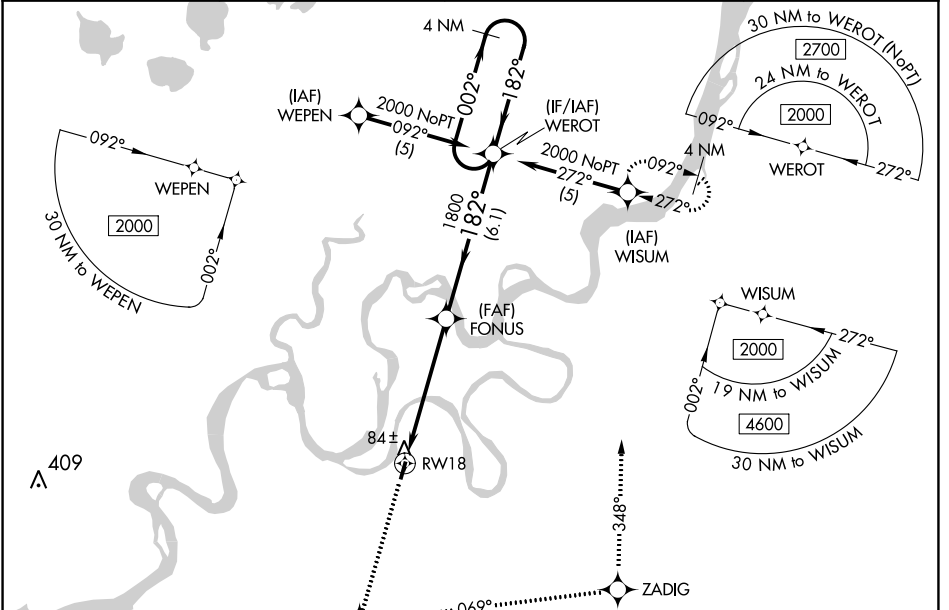
RNAV (GPS) RWY 18

KWETHLUK (KWT) (PFWK)

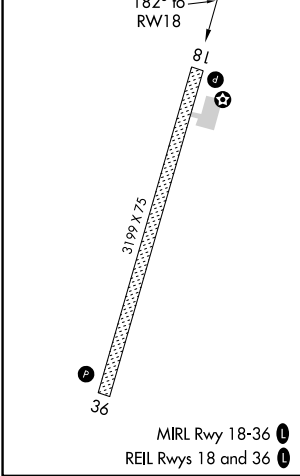
NA Baro-VNAV NA.
DME/DME RNP-0.3 NA.
W When local altimeter setting not received, use Bethel altimeter setting.

MISSED APPROACH: Climb to 2000 direct VORCU and left turn via 069° track to ZADIG and via 348° track to WISUM and hold.

AWOS-3P 120.0	BET/PABE ASOS 135.45	ANCHORAGE CENTER 125.2 372.0	CTAF 122.9
-------------------------	--------------------------------	--	----------------------



ELEV 25	TDZE 25
---------	---------



2000	VORCU	ZADIG	WISUM	WEROT	4 NM Holding Pattern
↑	⬠	⬠	⬠	⬠	
	069° tr	348° tr			
VGS1 and RNAV glidepath not coincident (VGS1 Angle 3.00/TCH 27).					
	RW18	FONUS	1800	2000	GP 3.00° TCH 40
	5.4 NM	6.1 NM			
CATEGORY	A	B	C	D	
LPV DA		316-1	291 (300-1)		
LNAV/VNAV DA		594-2	569 (600-2)		
LNAV MDA	620-1	595 (600-1)	620-1¼	595 (600-1¼)	
CIRCLING	680-1	655 (700-1)	680-1¼ 655 (700-1¼)	680-2 655 (700-2)	

AK, 26 DEC 2024 to 20 FEB 2025

AK, 26 DEC 2024 to 20 FEB 2025