

RADAR and DME required.

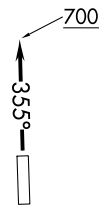
TOP ALTITUDE:  
ASSIGNED BY ATC

(PSX3, PSX) 24137  
PALACIOS THREE DEPARTURE

AL-10328 (FAA)

HOUSTON EXEC (TME)  
HOUSTON, TEXAS

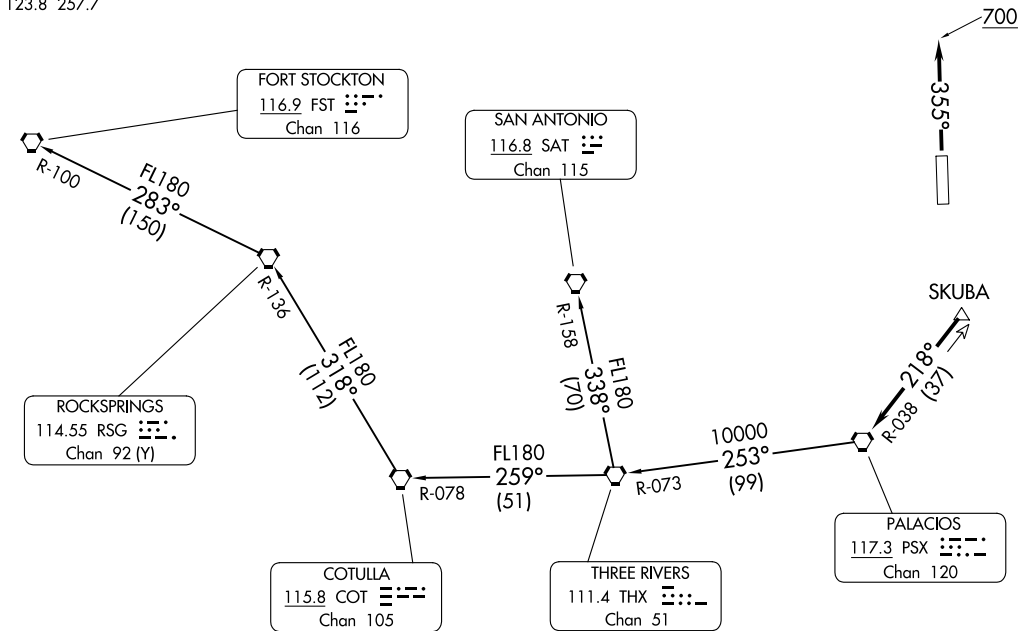
TAKEOFF MINIMUMS  
Rwys 18, 36: Standard.



ATIS  
119.525  
CLNC DEL  
132.075  
GND CON  
132.075  
EXECUTIVE TOWER ★  
126.975 (CTAF)  
HOUSTON DEP CON  
123.8 257.7

PALACIOS THREE DEPARTURE  
(PSX3, PSX) 03NOV22

HOUSTON, TEXAS  
HOUSTON EXEC (TME)



NOTE: Chart not to scale.

(CONTINUED ON FOLLOWING PAGE)

# PALACIOS THREE DEPARTURE



## DEPARTURE ROUTE DESCRIPTION

TAKEOFF RUNWAY 18: When entering controlled airspace, climb on assigned heading for RADAR vectors to SKUBA. Maintain ATC assigned altitude. Expect filed altitude 10 minutes after departure, thence . . . .

TAKEOFF RUNWAY 36: Climb on heading 355° to 700 before turning. When entering controlled airspace, climb on assigned heading for RADAR vectors to SKUBA. Maintain ATC assigned altitude. Expect filed altitude 10 minutes after departure, thence . . . .

. . . . on PSX R-038 to PSX VORTAC.

FORT STOCKTON TRANSITION (PSX3.FST): From over PSX VORTAC on PSX R-253 and THX R-073 to THX VORTAC, then on THX R-259 and COT R-078 to COT VORTAC, then on COT R-318 and RSG R-136 to RSG VORTAC, then on RSG R-283 and FST R-100 to FST VORTAC.

SAN ANTONIO TRANSITION (PSX3.SAT): From over PSX VORTAC on PSX R-253 and THX R-073 to THX VORTAC, then on SAT R-158 to SAT VORTAC.

SC-5, 26 DEC 2024 to 23 JAN 2025

SC-5, 26 DEC 2024 to 23 JAN 2025