

| | | |
|--|------------------------|---|
| WAAS CH 97504 W36A | APP CRS 355° | Rwy Idg 6610 TDZE 164 Apt Elev 166 |
|--|------------------------|---|

RNAV (GPS) RWY 36

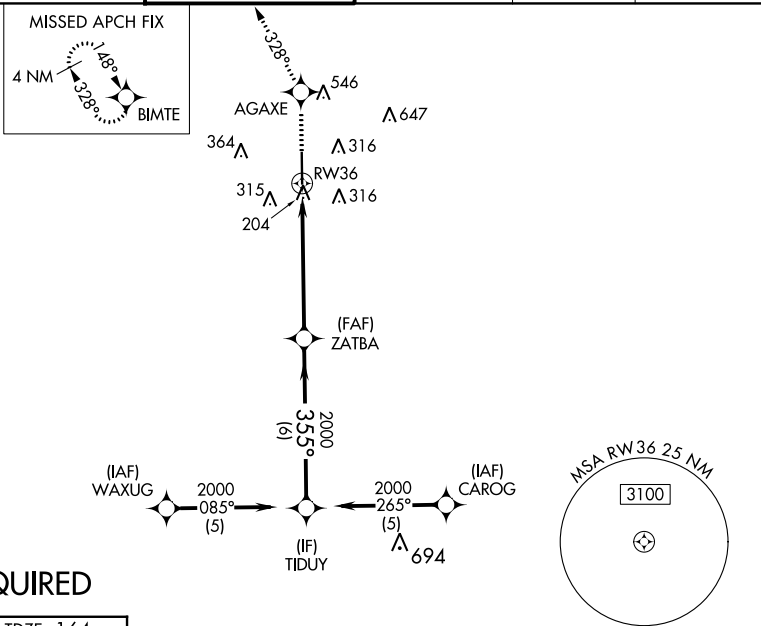
HOUSTON EXEC (TME)

RNP APCH - GPS.

▼ Baro-VNAV NA when using David Wayne Hooks Meml altimeter setting. For uncompensated Baro-VNAV systems, LNAV/VNAV NA below -15°C and above 48°C. VDP NA when using David Wayne Hooks Meml altimeter setting. When local altimeter setting not received, use David Wayne Hooks Meml altimeter setting and increase LPV DA to 471 feet, LNAV/VNAV DA to 719 feet; increase all MDA 60 feet. Increase LNAV/VNAV visibility ¼ mile all Cats and LNAV and circling Cat C/D ¼ mile.

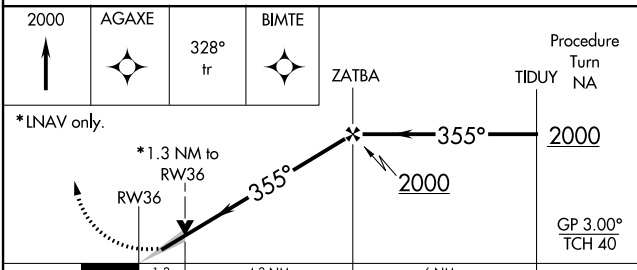
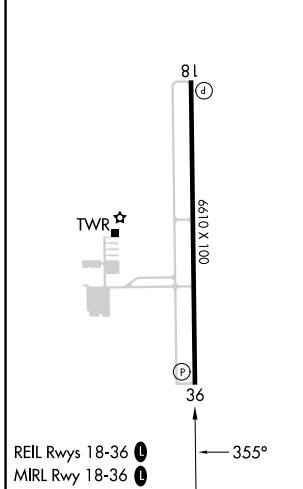
MISSED APPROACH:
Climb to 2000 direct
AGAXE and via 328°
track to BIMTE and
hold.

| | | | | | |
|------------------------|---------------------------------------|--|---------------------------|----------------------------|--------------------------|
| ATIS 119.525 | HOUSTON APP CON 123.8 257.7 | EXECUTIVE TOWER ★ 126.975 (CTAF) 0 | GND CON 132.075 | CLNC DEL 132.075 | UNICOM 122.975 |
|------------------------|---------------------------------------|--|---------------------------|----------------------------|--------------------------|



RADAR REQUIRED

| | |
|-----------------|-----------------|
| ELEV 166 | TDZE 164 |
|-----------------|-----------------|



| CATEGORY | A | B | C | D |
|--------------|---------------------|---------------------|---|----------------------|
| LPV DA | 414-1 250 (300-1) | | | |
| LNAV/VNAV DA | 662-1¾ 498 (500-1¾) | | | |
| LNAV MDA | 620-1 456 (500-1) | 620-1¼ 456 (500-1¼) | | 620-1½ 456 (500-1½) |
| CIRCLING | 820-1 654 (700-1) | 860-2 694 (700-2) | | 1000-2¾ 834 (900-2¾) |

SC-5, 26 DEC 2024 to 23 JAN 2025

SC-5, 26 DEC 2024 to 23 JAN 2025