

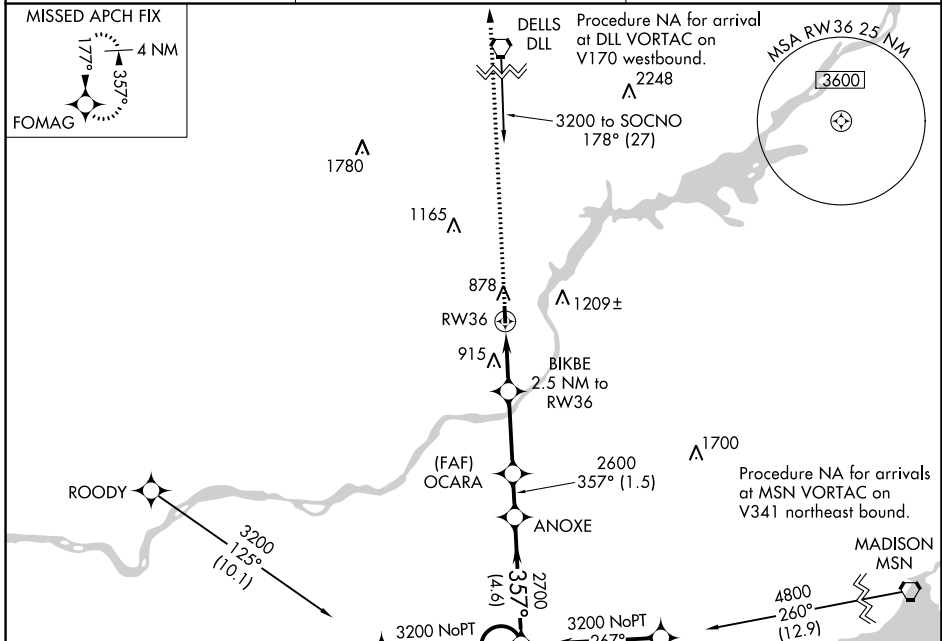
APP CRS	Rwy Idg	<b>2936</b>
<b>357°</b>	TDZE	<b>832</b>
	Apt Elev	<b>832</b>

# RNAV (GPS) RWY 36

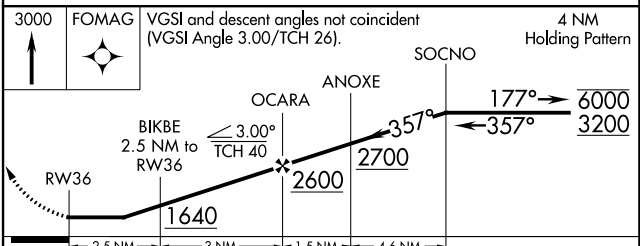
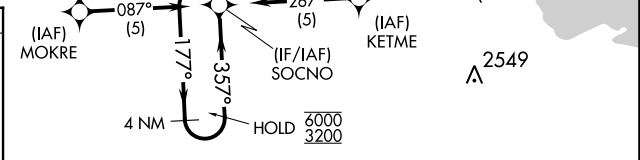
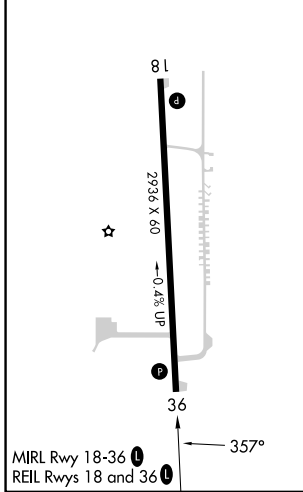
SAUK/PRAIRIE (91C)

RNP APCH	<p><b>▼</b> Rwy 36 helicopter visibility reduction below 3/4 SM NA.  <b>▲</b> NA Use Madison altimeter setting.</p>	MISSED APPROACH: Climb to 3000 direct FOMAG and hold.
----------	---	---

MSN ASOS <b>124.65 278.3</b>	MADISON APP CON ★ <b>135.45 343.7</b>	CTAF <b>122.9 0</b>
---------------------------------	--	------------------------



ELEV 832	TDZE 832
----------	----------



CATEGORY	A	B	C	D
LNAV MDA	1240-1	408 (500-1)	NA	
<b>C</b> CIRCLING	1400-1 568 (600-1)	1460-1 628 (700-1)	NA	

EC-3, 26 DEC 2024 to 23 JAN 2025

EC-3, 26 DEC 2024 to 23 JAN 2025