

WAAS CH <b>58209</b> <b>W02A</b>	APP CRS <b>019°</b>	Rwy Idg TDZE <b>389</b> Apt Elev <b>389</b>	<b>5002</b> <b>389</b> <b>389</b>
----------------------------------------	------------------------	---------------------------------------------------	-----------------------------------------

# RNAV (GPS) RWY 2

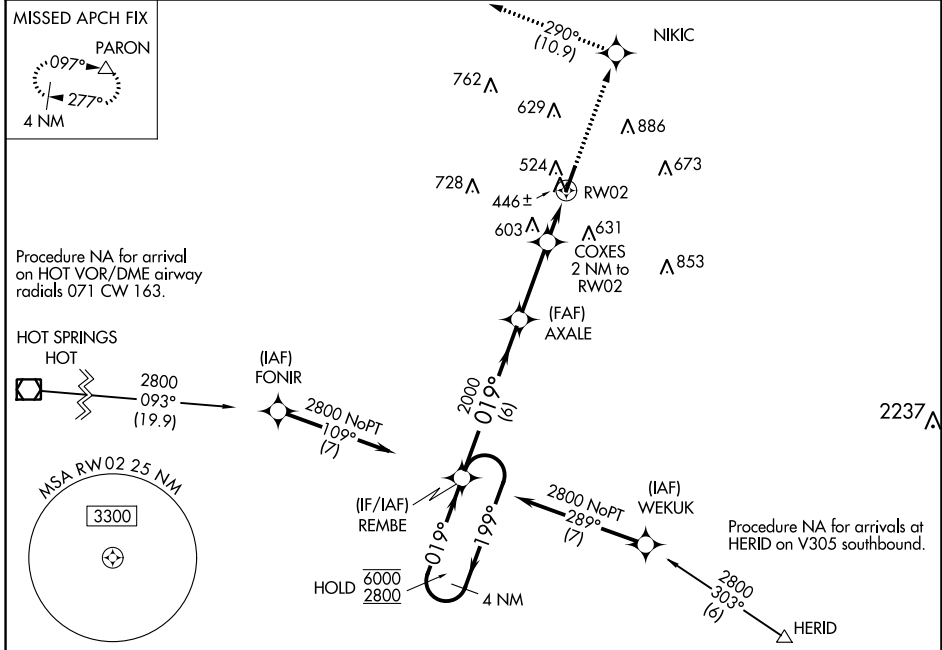
SALINE COUNTY RGNL (SUZ)

RNP APCH - GPS.

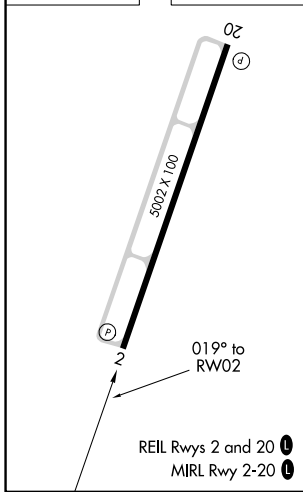
- ▼ Rwy 2 helicopter visibility reduction below 3/4 SM NA.
- ▲ For uncompensated Baro-VNAV systems, LNAV/VNAV NA below -15°C or above 54°C.

MISSED APPROACH: Climb to 2600 direct NIKIC and track 290° to PARON and hold.

AWOS-3 <b>132.125</b>	LITTLE ROCK APP CON <b>119.5 306.2</b>	UNICOM <b>122.8 (CTAF) 0</b>
--------------------------	-------------------------------------------	---------------------------------



ELEV <b>389</b>	TDZE <b>389</b>
-----------------	-----------------



VGSIs and RNAV glidepath not coincident (VGSIs Angle 3.00/TCH 56).		2600	NIKIC	PARON
4 NM Holding Pattern		↑	290° tr	△
6000	2800	2000	1060	RWY 2
GP 3.00° TCH 45	AXALE	COXES 2 NM to RWY 2	1.2 NM to RWY 2	
	6 NM	3 NM	0.8	1.2 NM
CATEGORY	A	B	C	D
LPV DA		639-3/4	250 (300-3/4)	
LNAV/VNAV DA		670-7/8	281 (300-7/8)	
LNAV MDA	820-1	431 (500-1)	820-1 1/4	431 (500-1 1/4)
CIRCLING	940-1 551 (600-1)	1080-1 691 (700-1)	1200-2 1/2 811 (900-2 1/2)	1200-2 3/4 811 (900-2 3/4)

SC-1, 26 DEC 2024 to 23 JAN 2025

SC-1, 26 DEC 2024 to 23 JAN 2025