

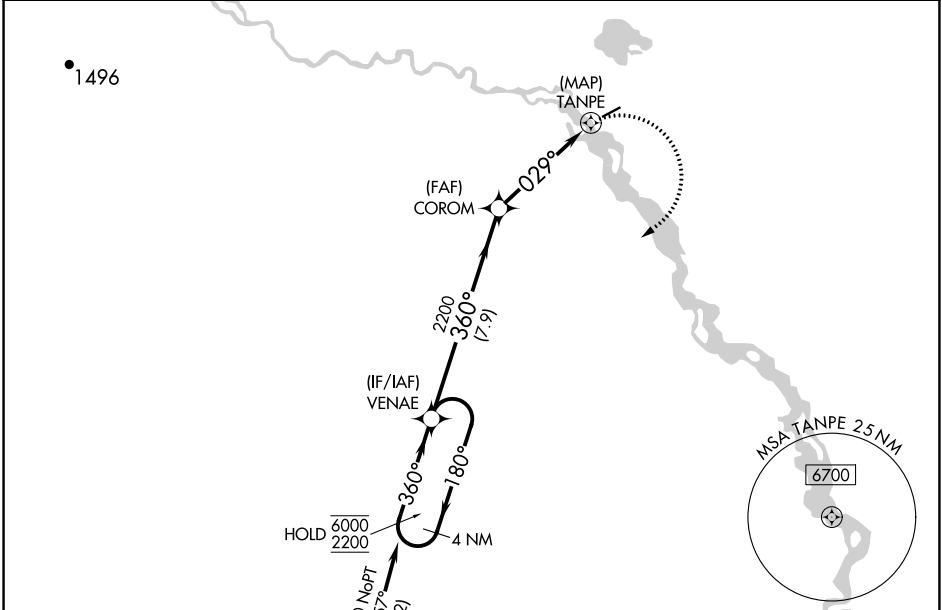
APP CRS	Rwy Idg	<b>4000</b>
<b>029°</b>	TDZE	<b>572</b>
	Apt Elev	<b>574</b>

# RNAV (GPS) RWY 4

VENETIE (VEE) (PAVE)

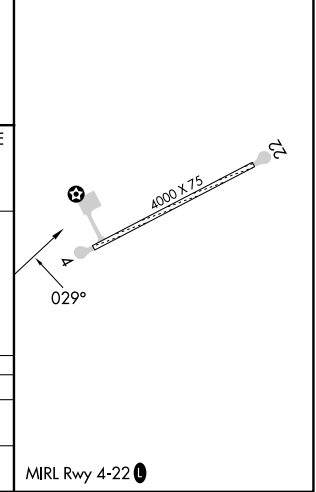
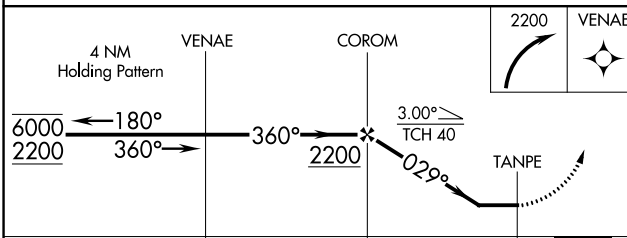
RNP APCH-GPS.		MISSED APPROACH: Climbing right turn to 2200, direct VENAE and hold.
NA	Rwy 4 helicopter visibility reduction below 1 SM NA. Use Fort Yukon altimeter setting. Procedure NA at night.	

FYU/PFYU AWOS-3P <b>125.8</b>	ANCHORAGE CENTER <b>135.0 225.4</b>	CTAF <b>122.9</b>
----------------------------------	--	----------------------



Procedure NA for arrivals at CURUP on airways B4 westbound and T273 southbound.

ELEV 574	TDZE 572
----------	----------



	7.9 NM		4.5 NM		0.5
CATEGORY	A	B	C	D	
LNVA MDA	1 220-1	648 (700-1)	1 220-1 $\frac{7}{8}$	648 (700-1 $\frac{7}{8}$ )	
CIRCLING	1 220-1	646 (700-1)	1 220-1 $\frac{7}{8}$	1 260-2 $\frac{1}{4}$ 686 (700-2 $\frac{1}{4}$ )	

AK, 26 DEC 2024 to 20 FEB 2025

AK, 26 DEC 2024 to 20 FEB 2025