

WAAS CH 99533 W21A	APP CRS 213°	Rwy Idg TDZE Apt Elev	5001 3705 3705
--	------------------------	-----------------------------	---

RNAV (GPS) RWY 21

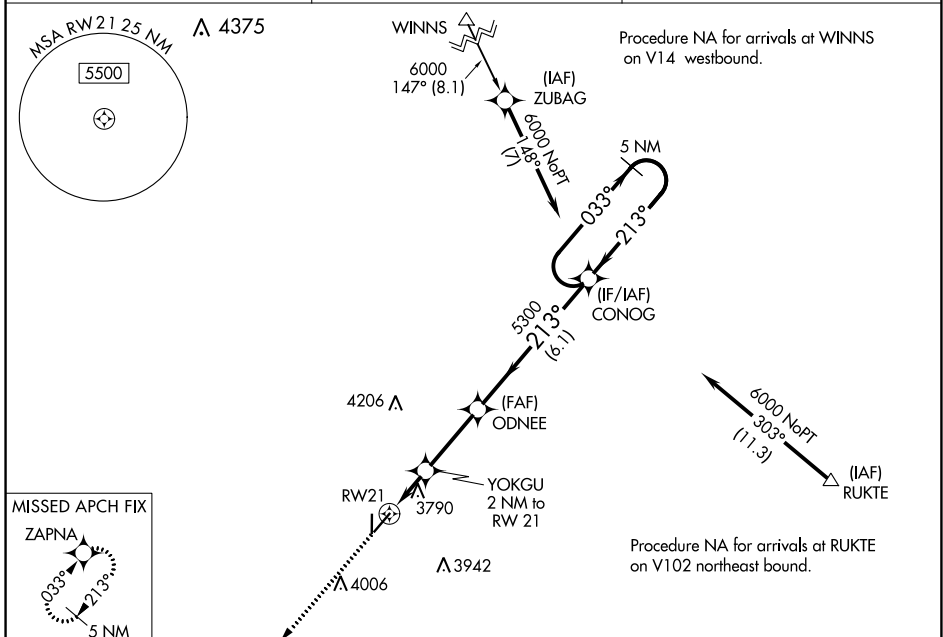
YOAKUM COUNTY (F98)

RNP APCH-GPS.

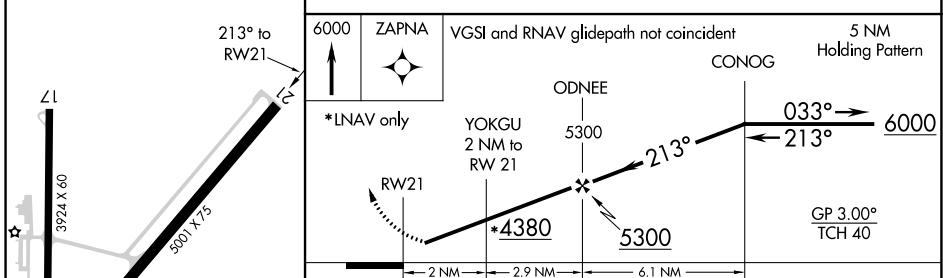
NA Baro-VNAV NA. Use Hobbs altimeter setting; when not received, use Seminole altimeter setting; increase LPV and LNAV/VNAV DA to 4088 and Cats A/B visibility to 1 1/8 mile; increase all MDAS 60 feet. Helicopter Visibility reduction below 3/4 SM NA.

MISSED APPROACH: Climb to 6000 direct ZAPNA and hold.

HOB AWOS-3 119.75	FORT WORTH CENTER 132.6 269.05	CTAF 122.9 0
-----------------------------	--	------------------------



ELEV 3705	TDZE 3705
-----------	-----------



CATEGORY	A	B	C	D
LPV DA	4047-1 1/8	342 (400-1 1/8)		NA
LNAV/VNAV DA	4047-1 1/8	342 (400-1 1/8)		NA
LNAV MDA	4140-1	435 (500-1)		NA
C CIRCLING	4200-1 495 (500-1)	4260-1 555 (600-1)		NA

MIRL Rwy 3-21 and Rwy 17-35 **0**

SC-2, 26 DEC 2024 to 23 JAN 2025

SC-2, 26 DEC 2024 to 23 JAN 2025