

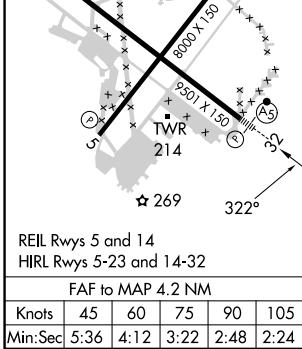
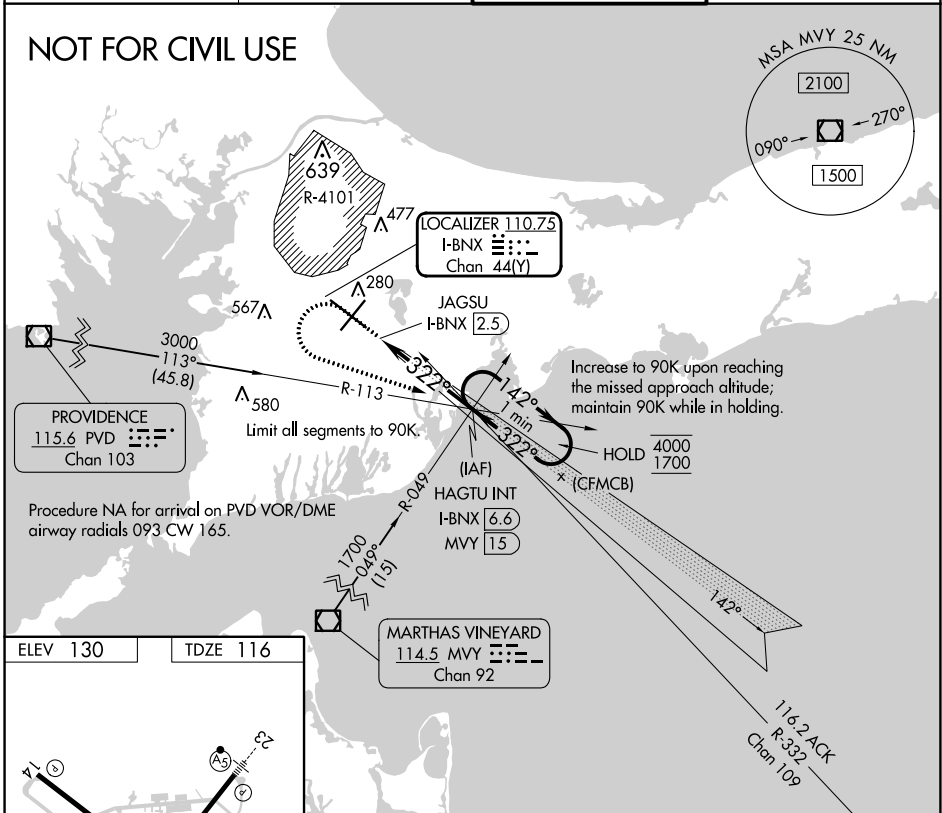
LOC/DME I-BNX 110.75 Chan 44(Y)	APP CRS 322°	Rwy Idg TDZE Apt Elev	9501 116 130
---	------------------------	-----------------------------	---

COPTER ILS Y or LOC Y RWY 32

CAPE COD COAST GUARD AIR STATION (F'MH)

<p>NA U.S. Coast Guard use only. For inop ALS, increase visibility to RVR 2400.</p>	<p>MALS R </p>	<p>MISSED APPROACH: Climb to 1400 then climbing left turn to 2000 on heading 123° and I-BNX localizer SE course to HAGTU INT/I-BNX 6.6 DME and hold.</p>
	<p>ATIS 120.475 236.825</p>	<p>BOSTON APP CON 118.2 284.6</p>
		<p>GND CON 124.15 275.8</p>

NOT FOR CIVIL USE



ELEV 130	TDZE 116	<p>1400 ↑ hdg 123°</p>		<p>I-BNX SE crs</p>	<p>HAGTU INT</p>	<p>HAGTU INT I-BNX 6.6 MVY 15</p>	<p>One Minute Holding Pattern</p>
<p>Use I-BNX DME when on the localizer course.</p>							
<p>JAGSU I-BNX 2.5</p>		<p>1700</p>		<p>142° → 4000 ← 322° 1700</p>		<p>GS 3.00° TCH 50</p>	
<p>0.7 NM</p>		<p>4.2 NM</p>					
CATEGORY				COPTER			
H-ILS 32		216/12		100 (100-¼)			
H-LOC 32		520/12		404 (400-¼)			

COPTER ILS Y or LOC Y RWY 32

NE-1, 26 DEC 2024 to 23 JAN 2025

NE-1, 26 DEC 2024 to 23 JAN 2025