

|  |                        |   |
|--|------------------------|---|
| WAAS<br>CH <b>87138</b><br><b>W13A</b> | APP CRS<br><b>134°</b> | Rwy Idg <b>4201</b><br>TDZE <b>1318</b><br>Apt Elev <b>1318</b> |
|--|------------------------|---|

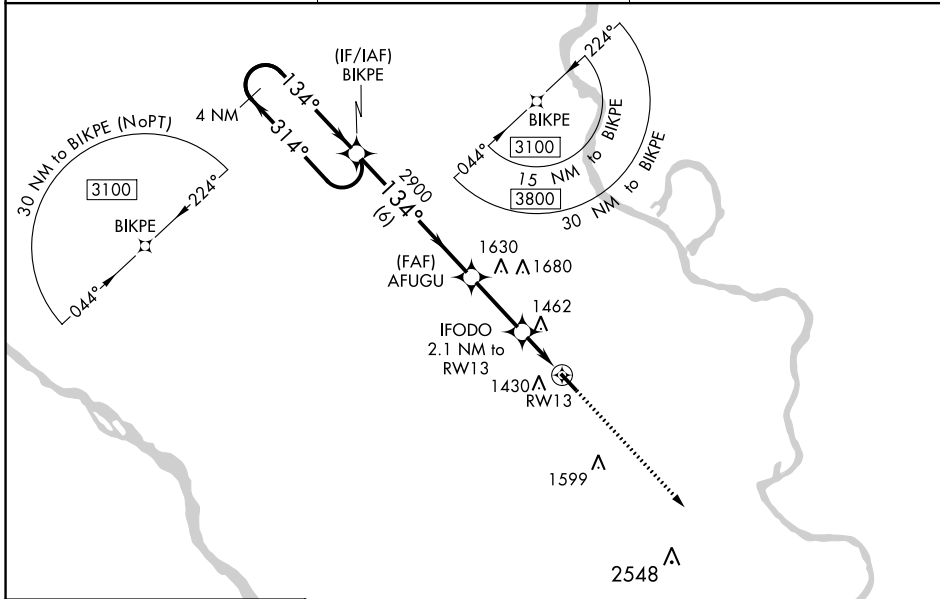
# RNAV (GPS) RWY 13

BLAIR EXEC (BTA)

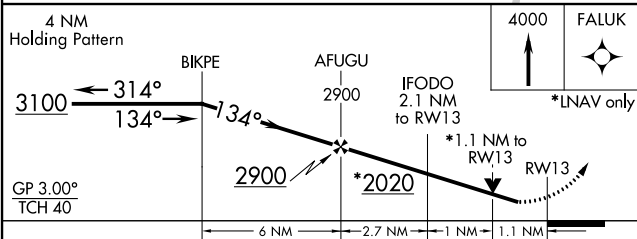
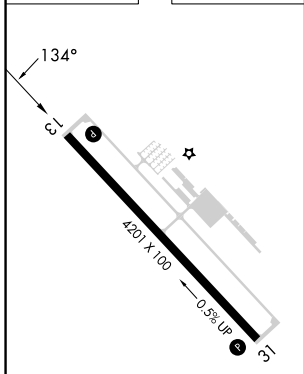
⚠ For uncompensated Baro-VNAV systems, LNAV/VNAV NA below -17°C (2°F) or above 54°C (130°F). Baro-VNAV and VDP NA when using Eppley Airfield altimeter setting.  
 ⚠ DME/DME RNP-0.3 NA. Helicopter visibility reduction below 3/4 SM NA. When local altimeter setting not received, use Eppley Airfield altimeter setting and increase LPV and LNAV/VNAV DA to 1642 and visibility to 1 1/8 mile all Cats, increase all MDA 80 feet and LNAV Cat C visibility to 1 3/8 mile.

MISSED APPROACH: Climb to 4000 direct FALUK and hold.

|                          |  |                                  |
|--------------------------|--|----------------------------------|
| AWOS-3<br><b>120.225</b> | OMAHA APP CON<br><b>135.875 354.05</b> | UNICOM<br><b>123.05 (CTAF) 0</b> |
|--------------------------|--|----------------------------------|



|           |           |
|-----------|-----------|
| ELEV 1318 | TDZE 1318 |
|-----------|-----------|



| CATEGORY          | A                     | B                     | C                             | D  |
|-------------------|-----------------------|-----------------------|-------------------------------|----|
| LPV DA            | 1568-7/8              | 250 (300-7/8)         |                               | NA |
| LNAV/VNAV DA      | 1568-7/8              | 250 (300-7/8)         |                               | NA |
| LNAV MDA          | 1720-1                | 402 (500-1)           | 1720-1 1/8<br>402 (500-1 1/8) | NA |
| <b>C</b> CIRCLING | 1740-1<br>422 (500-1) | 1780-1<br>462 (500-1) | 1780-2<br>462 (500-2)         | NA |

REIL Rwy 31 0  
MIRL Rwy 13-31 0

BLAIR, NEBRASKA  
Amdt 1 26MAY16

41°25'N-96°07'W

# RNAV (GPS) RWY 13

BLAIR EXEC (BTA)

NC-2, 26 DEC 2024 to 23 JAN 2025

NC-2, 26 DEC 2024 to 23 JAN 2025