

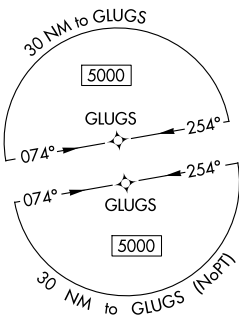
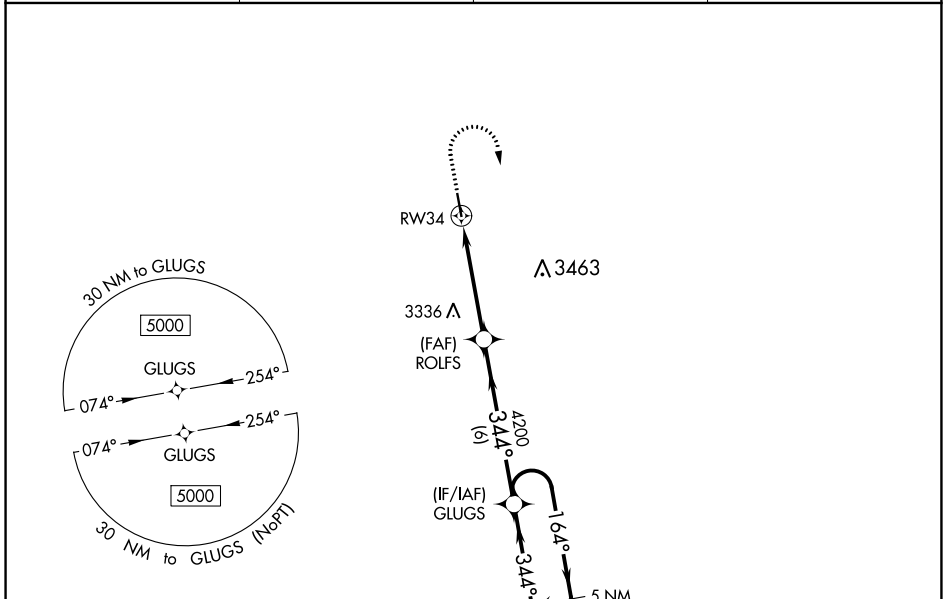
APP CRS	Rwy Idg	4800
344°	TDZE	2724
	Apt Elev	2724

RNAV (GPS) RWY 34

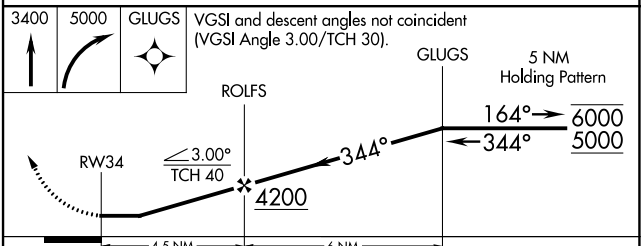
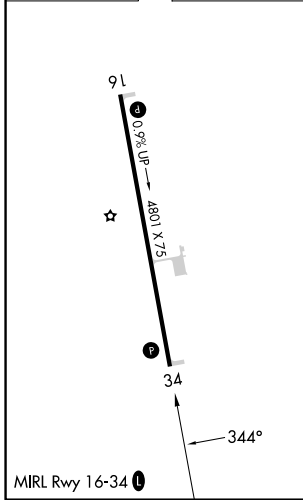
ROSEBUD SIOUX TRIBAL (SUO)

RNP APCH - GPS.	<p>MISSED APPROACH: Climb to 3400 then climbing right turn to 5000 direct GLUGS and hold.</p>
<p>NA Rwy 34 helicopter visibility reduction below 1 SM NA. When local altimeter setting not received, use VTN altimeter setting. Procedure NA at night.</p>	

AWOS-3P 119,075	VTN ASOS 118,075	DENVER CENTER 127.95 338.2	CTAF 122.9
---------------------------	----------------------------	--------------------------------------	----------------------



ELEV 2724	D	TDZE 2724
-----------	----------	-----------



CATEGORY	A	B	C	D
LNAV MDA	3380-1	656 (700-1)	3380-1 $\frac{7}{8}$ 656 (700-1 $\frac{7}{8}$)	NA
C CIRCLING	3380-1	656 (700-1)	3440-2 716 (800-2)	NA

NC-1, 26 DEC 2024 to 23 JAN 2025

NC-1, 26 DEC 2024 to 23 JAN 2025