

WAAS CH <b>78213</b> <b>W06A</b>	APP CRS <b>064°</b>	Rwy Idg <b>4000</b> TDZE <b>54</b> Apt Elev <b>55</b>
--	------------------------	---

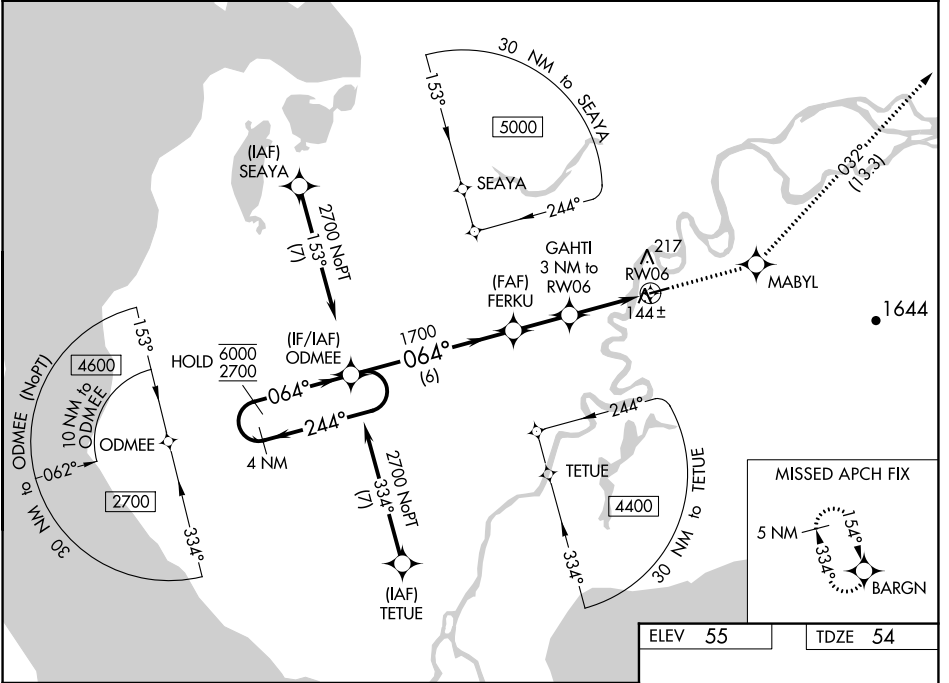
# RNAV (GPS) RWY 6

ROBERT/BOB/CURTIS MEML (D76) (PFNO)

RNP APCH.  
 ▼ Rwy 6 helicopter visibility reduction below 3/4 SM NA.  
 ▲ For uncompensated Baro-VNAV systems, LNAV/VNAV  
 NA below -22°C or above 54°C.  
 ❄️ -23°C

MISSED APPROACH: Climb to 4400 direct MABYL and on track 032° to BARGN and hold, continue climb-in-hold to 4400.

AWOS-3P <b>120.0</b>	ANCHORAGE CENTER <b>119.2 263.0</b>	CTAF <b>122.7 0</b>
-------------------------	--	------------------------



AK, 26 DEC 2024 to 20 FEB 2025

AK, 26 DEC 2024 to 20 FEB 2025

VGSIs and RNAV glidepath not coincident (VGSIs Angle 3.00/TCH 25).		4400	MABYL	tr 032°	BARGN
4 NM Holding Pattern		ODMEE	FERKU	GAHTI 3 NM to RW06	*LNAV only
6000 ← 244°	2700 → 064°	1700	*1.2 NM to RW06		
GP 3.00°	TCH 40	1700	*1020		
6 NM		2.1 NM	1.8 NM	1.2 NM	
CATEGORY	A	B	C	D	
LPV DA	304-1		250 (300-1)		
LNAV/VNAV DA	355-1		301 (300-1)		
LNAV MDA	460-1 406 (500-1)		460-1 1/8 406 (500-1 1/8)		
☐ CIRCLING	520-1 465 (500-1)		520-1 1/2 465 (500-1 1/2) 760-2 1/4 705 (800-2 1/4)		

ELEV 55 TDZE 54

MIRL Rwy 6-24 0