

WAAS CH 82027 W 16A	APP CRS 158°	Rwy Idg TDZE Apt Elev	3702 1744 1744
---	------------------------	-----------------------------	---

RNAV (GPS) RWY 16

RED CLOUD MUNI (7V7)

RNP APCH - GPS.

NA Baro-VNAV NA. Rwy 16 helicopter visibility reduction below 3/4 SM NA. Use K82 altimeter setting; when not received, use HSI altimeter setting and increase LPV DA to 2120 feet; increase LNAV/VNAV DA to 2290 feet and all visibilities 1/2 SM. Increase all MDAs 60 feet.

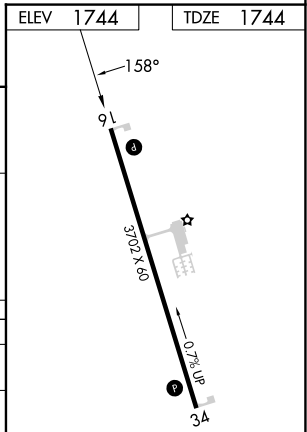
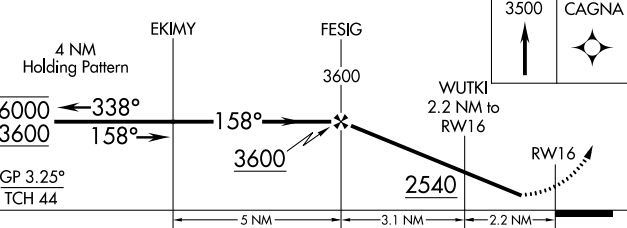
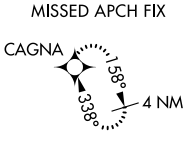
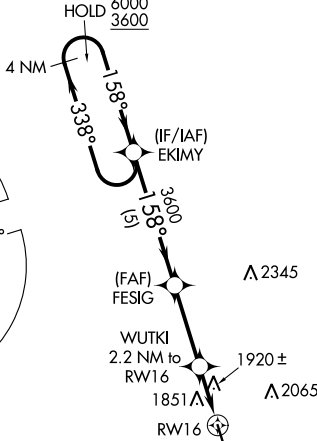
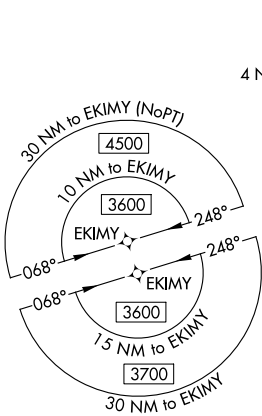
MISSED APPROACH: Climb to 3500 direct CAGNA and hold.

K82 AWOS-3PT
118.45

MINNEAPOLIS CENTER
119.4 278.8

CTAF
122.9 0

Δ 2665



CATEGORY	A	B	C	D
LPV DA	2075-1	331 (400-1)		NA
LNAV/VNAV DA	2245-1 3/8	501 (600-1 3/8)		NA
LNAV MDA	2240-1	496 (500-1)		NA
CIRCLING	2280-1 536 (600-1)	2300-1 556 (600-1)		NA

MIRL Rwy 16-34
REIL Rwy 16 and 34

NC-2, 26 DEC 2024 to 23 JAN 2025

NC-2, 26 DEC 2024 to 23 JAN 2025