

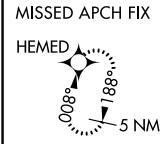
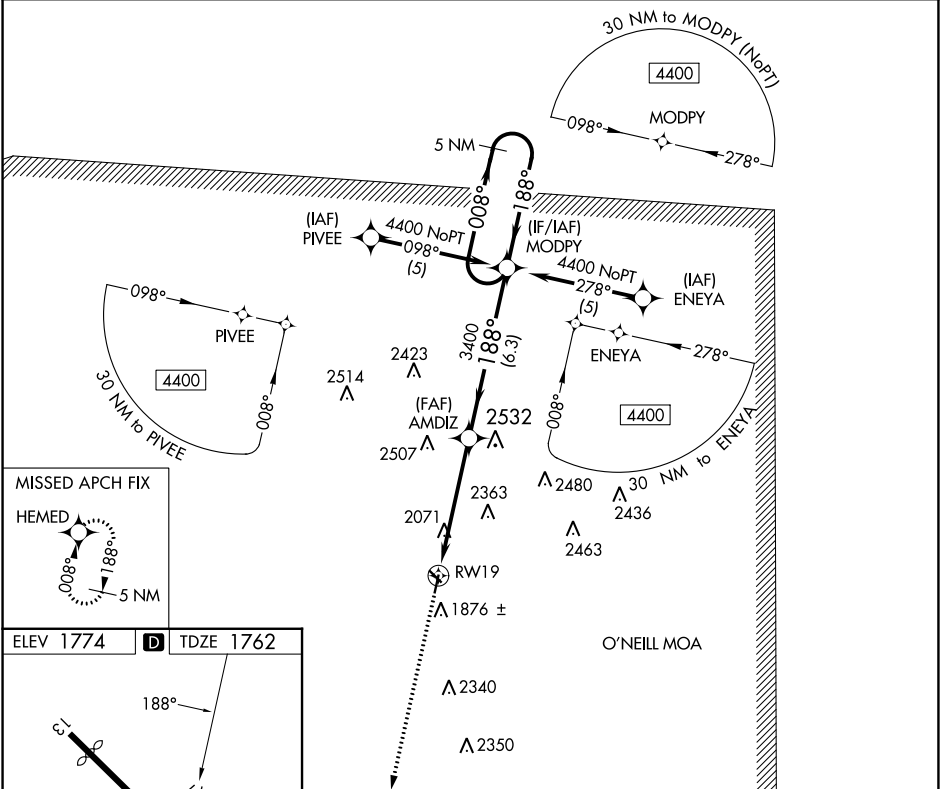
APP CRS	Rwy Idg	3700
188°	TDZE	1762
	Apt Elev	1774

RNAV (GPS) RWY 19

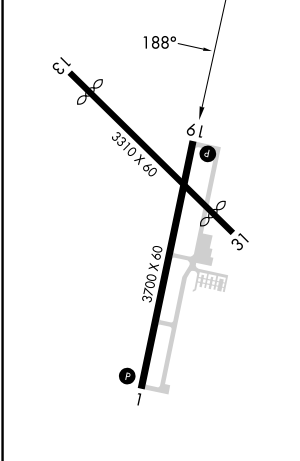
ANTELOPE COUNTY (4V9)

RNP APCH - GPS.	MISSED APPROACH: Climb to 4400 direct HEMED and hold.
<p>▼ Visibility reduction by helicopters NA. Use Albion altimeter setting, when not received, use Norfolk altimeter setting and increase all MDA 40 feet.</p> <p>▲ NA</p>	

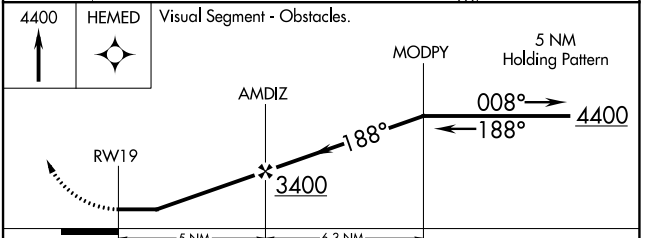
AWOS-3PT 119.275	MINNEAPOLIS CENTER 128.0 257.95	UNICOM 122.8 (CTAF) 0
----------------------------	---	---------------------------------



ELEV 1774	D	TDZE 1762
-----------	----------	-----------



MIRL Rwy 1-19 and 13-31 0



CATEGORY	A	B	C	D
LNVA MDA	2380-1	618 (700-1)	NA	
C CIRCLING	2380-1 606 (700-1)	2440-1 666 (700-1)	NA	

NC-2, 26 DEC 2024 to 23 JAN 2025

NC-2, 26 DEC 2024 to 23 JAN 2025