

APP CRS	Rwy Idg	3701
339°	TDZE	55
	Apt Elev	55

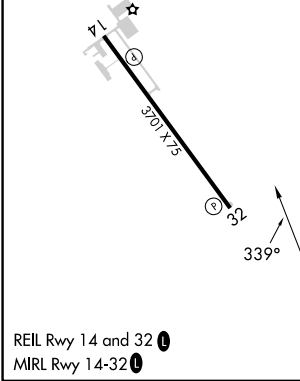
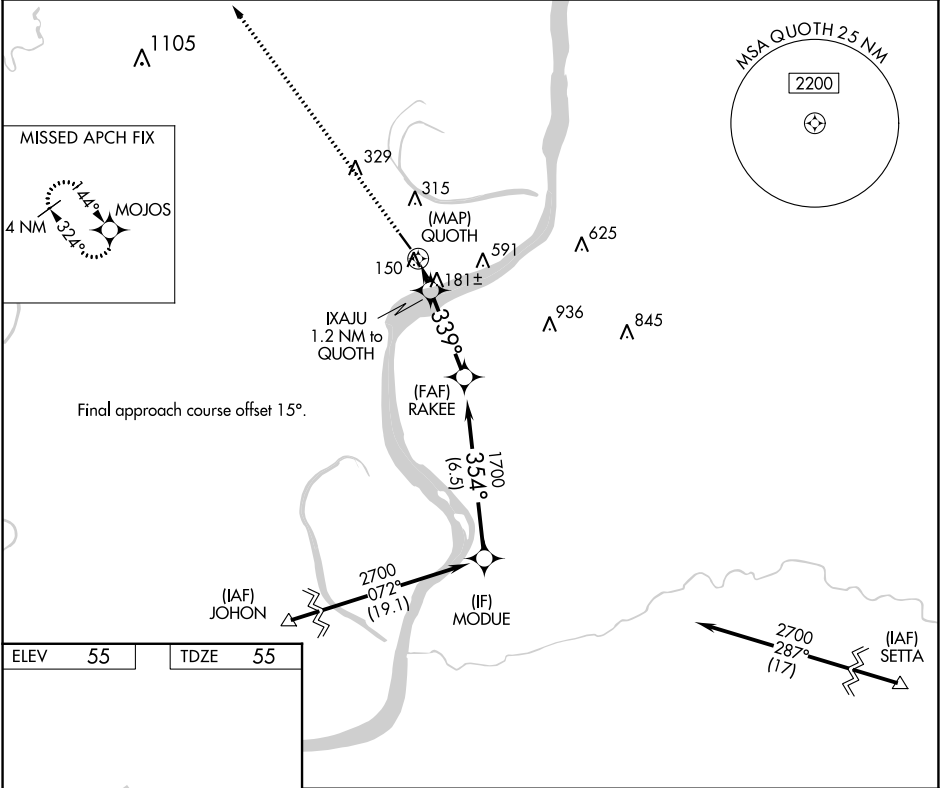
RNAV (GPS) RWY 32

CONCORDIA PARISH (ØR4)

NA DME/DME RNP-0.3 NA. Use Natchez altimeter setting; when not received, use Esler Rgnl altimeter setting and increase all MDA 60 feet and Circling Cat C visibility ¼ mile. Helicopter visibility reduction below ¾ SM NA.

MISSED APPROACH: Climb to 2700 direct MOJOS and hold.

AWOS-3 118.2	HOUSTON CENTER 120.975 299.6	UNICOM 122.8 (CTAF) Ø
------------------------	--	---------------------------------



2700	MOJOS				
					MODUE
	QUOTH	IXAJU 1.2 NM to QUOTH	RAKEE	1700	2700
		640	3.00° TCH 50		
	0.5	1.2 NM	3.3 NM	6.5 NM	
CATEGORY	A	B	C	D	
LNAV MDA	500-1	445 (500-1)	500-1 3/8 445 (500-1 3/8)	NA	
C CIRCLING	680-1	625 (700-1)	960-2 3/4 905 (1000-2 3/4)	NA	

SC-4, 26 DEC 2024 to 23 JAN 2025

SC-4, 26 DEC 2024 to 23 JAN 2025