

WAAS CH <b>40038</b> <b>W16A</b>	APP CRS <b>193°</b>	Rwy Idg TDZE Apt Elev	<b>2901</b> <b>35</b> <b>35</b>
--	------------------------	-----------------------------	---------------------------------------

# RNAV (GPS) RWY 16

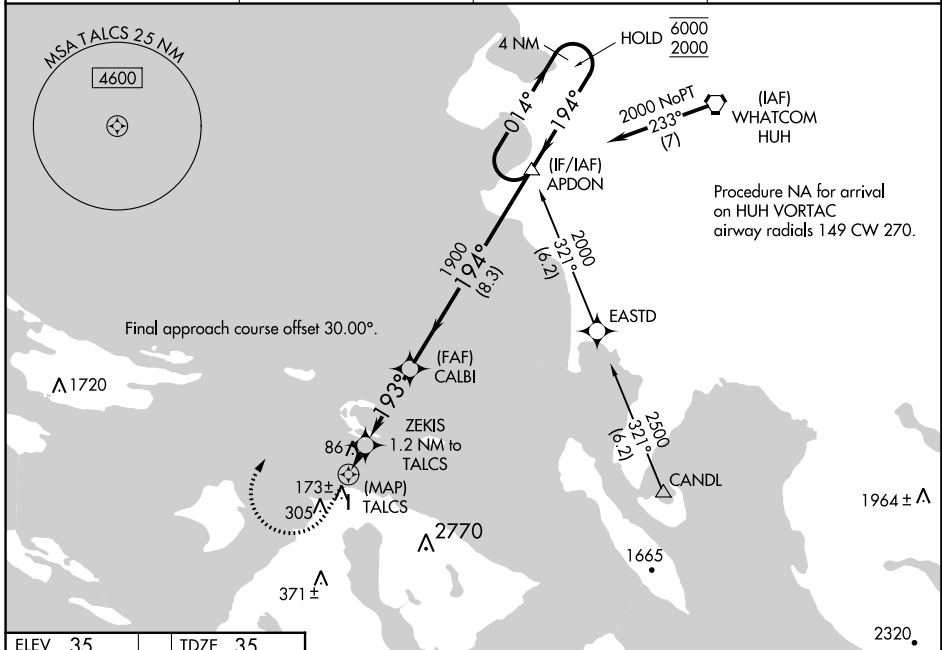
ORCAS ISLAND (ORS)

**RNP APCH.**

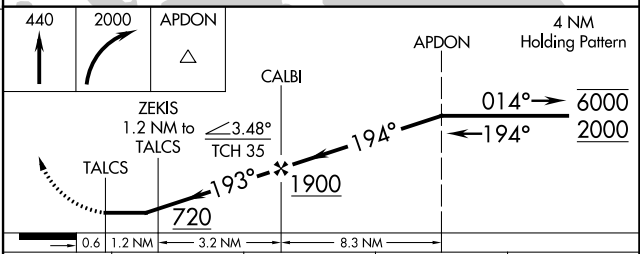
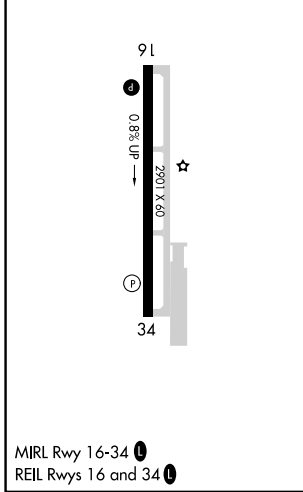
**⚠** Circling to Rwy 34 NA at night. Rwy 16 helicopter visibility reduction below 3/4 SM NA. When local altimeter setting not received, use Friday Harbor altimeter setting and increase all MDA 40 feet.

**⚠** MISSED APPROACH: Climb to 440 then climbing right turn to 2000 direct APDON and hold.  
# Missed approach requires minimum climb of 385 feet per NM to 980.

AWOS-3P <b>135.425</b>	WHIDBEY APP CON <b>118.2 285.65 (SOUTH)</b>	VICTORIA APP CON <b>132.7 290.8 (NORTH)</b>	CTAF <b>128.250</b>
---------------------------	--	--	------------------------



ELEV 35	TDZE 35
---------	---------



CATEGORY	A	B	C	D
LP MDA #	340-1	305 (400-1)		NA
LP MDA	400-1	365 (400-1)		NA
LNAV MDA #	440-1	405 (500-1)		NA
LNAV MDA	700-1	665 (700-1)		NA
<b>C</b> CIRCLING	1120-1 1/4 1085 (1100-1 1/4)	1820-1 1/2 1785 (1800-1 1/2)		NA

NW-1, 26 DEC 2024 to 23 JAN 2025

NW-1, 26 DEC 2024 to 23 JAN 2025