

WAAS CH 99538 W34A	APP CRS 327°	Rwy Idg TDZE Apt Elev	2901 35 35
--	------------------------	-----------------------------	---------------------------------------

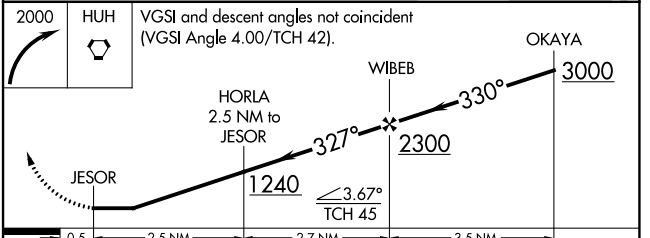
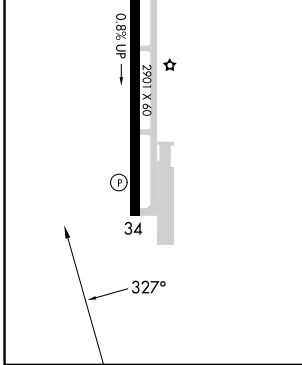
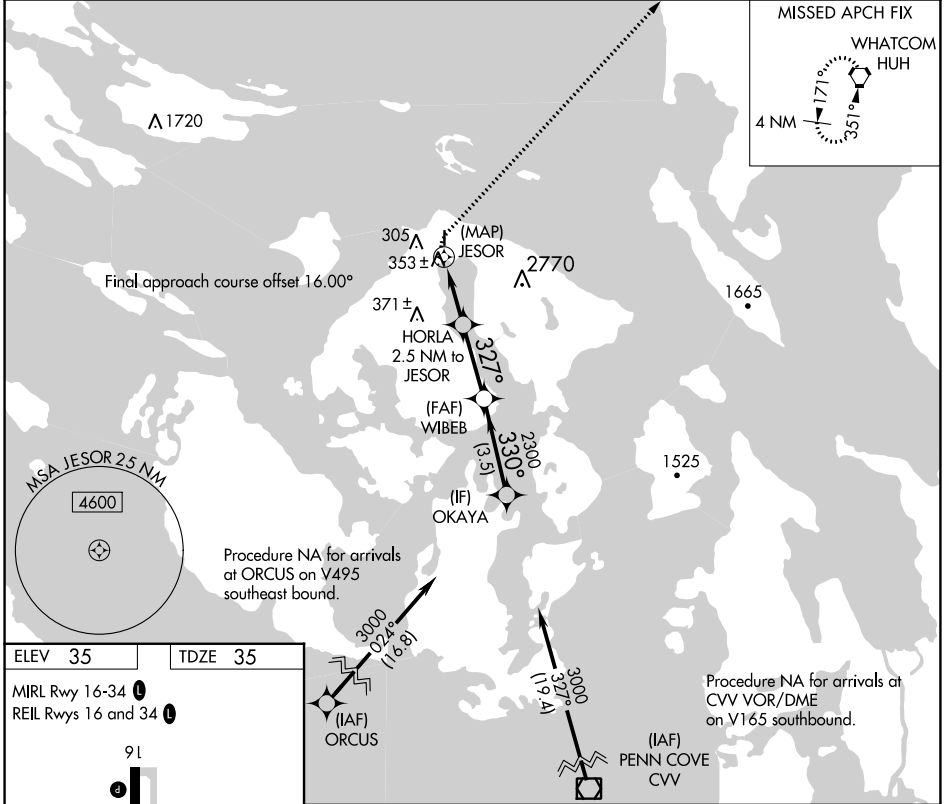
RNAV (GPS) RWY 34

ORCAS ISLAND (ORS)

⚠ DME/DME RNP-0.3 NA. Helicopter visibility reduction below 1 SM NA.
⚠ WAAS required, if unable see RNAV GPS-A. When local altimeter setting not received, use Friday Harbor altimeter setting and increase all MDA 40 feet and LP Cat B visibility ¼ mile. Night landing: Rwy 34 NA.

MISSED APPROACH: Climbing right turn to 2000 direct HUH VORTAC and hold.

AWOS-3P 135.425	WHIDBEY APP CON 118.2 285.65 (SOUTH)	VICTORIA APP CON 132.7 290.8 (NORTH)	CTAF 128.250
---------------------------	--	--	------------------------



CATEGORY	A	B	C	D
LP MDA	760-1	725 (800-1)	NA	
C CIRCLING	1120-1¼ 1085 (1100-1¼)	1820-1½ 1785 (1800-1½)	NA	

NW-1, 26 DEC 2024 to 23 JAN 2025

NW-1, 26 DEC 2024 to 23 JAN 2025