

WAAS CH 70739 W14A	APP CRS 146°	Rwy Idg 3397 TDZE 1232 Apt Elev 1240
--	------------------------	---

RNAV (GPS) RWY 14

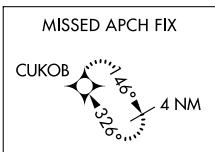
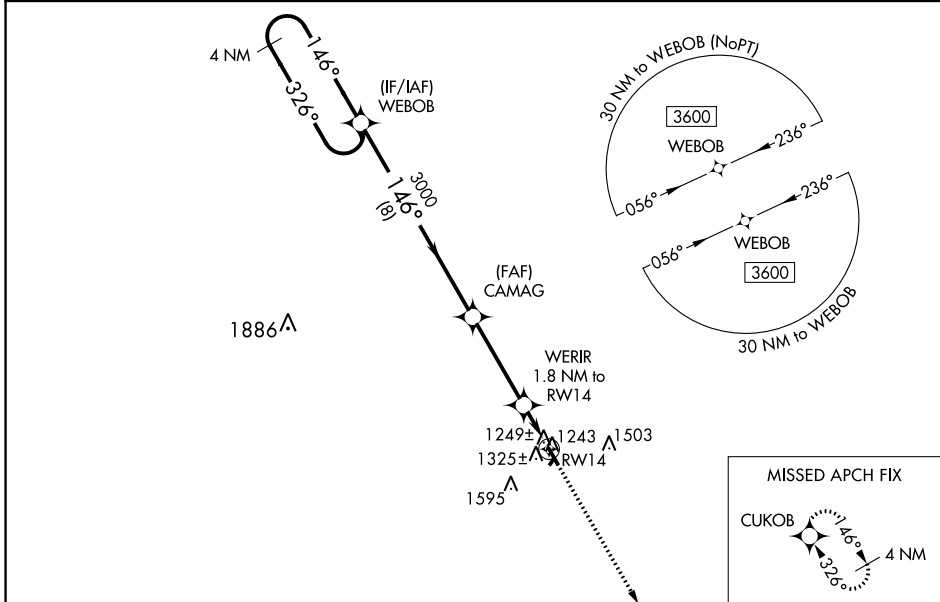
LIBSON MUNI (6L3)

RNP APCH - GPS.

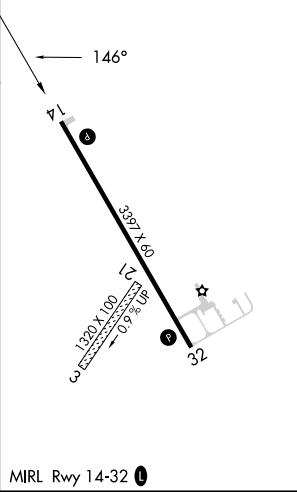
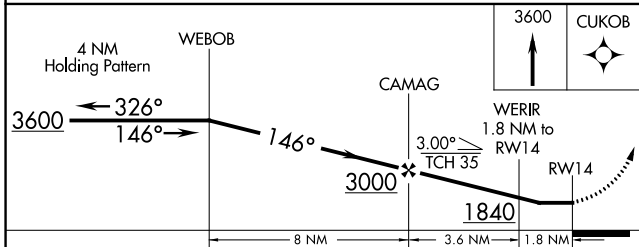
▼ Circling NA to Rws 3 and 21. Rwy 14 helicopter visibility reduction below 1 SM NA. Use Gwinner altimeter setting; when not received, use Valley City altimeter setting and increase all MDAs 80 feet. Straight-In Rwy 14 NA at night. Circling Rwy 14 NA at night.

▲ NA MISSED APPROACH: Climb to 3600 direct CUKOB and hold.

GWR AWOS-3 118.325	MINNEAPOLIS CENTER 127.35 278.3	CTAF 122.9
------------------------------	---	----------------------



ELEV 1240	TDZE 1232
-----------	-----------



CATEGORY	A	B	C	D
LP MDA	1580-1	348 (400-1)		NA
RNAV MDA	1620-1	388 (400-1)		NA
CIRCLING	1740-1 500 (500-1)	1940-1 700 (700-1)		NA

NC-1, 26 DEC 2024 to 23 JAN 2025

NC-1, 26 DEC 2024 to 23 JAN 2025