

WAAS CH <b>97637</b> <b>W27A</b>	APP CRS <b>268°</b>	Rwy Idg <b>3500</b> TDZE <b>912</b> Apt Elev <b>916</b>
--	------------------------	---

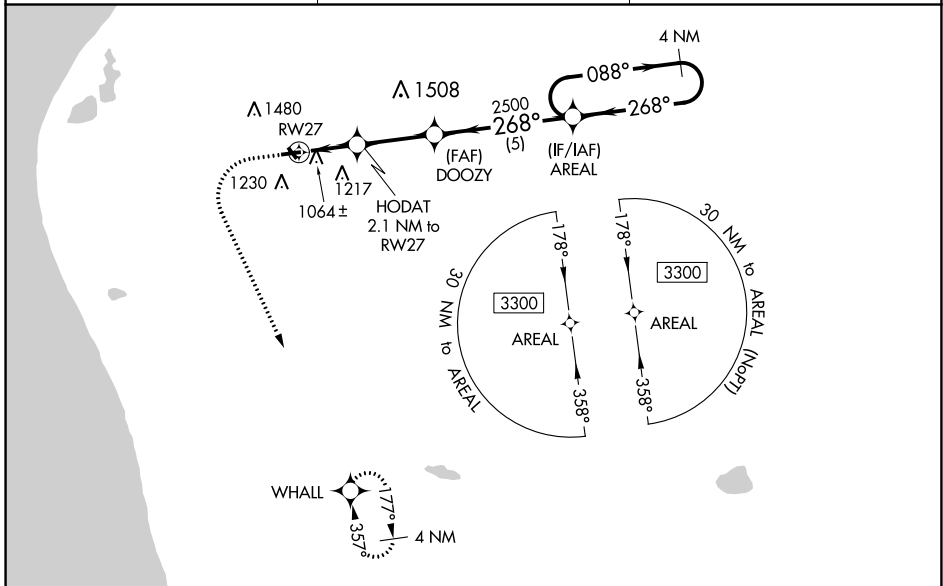
# RNAV (GPS) RWY 27

OCEANA COUNTY (C04)

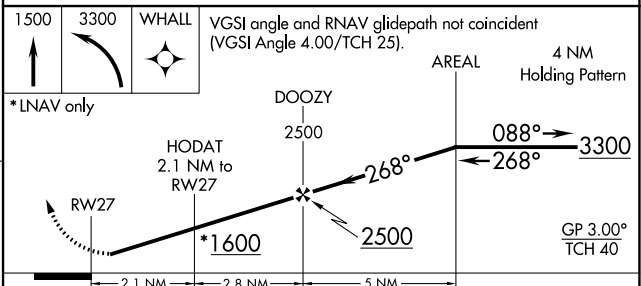
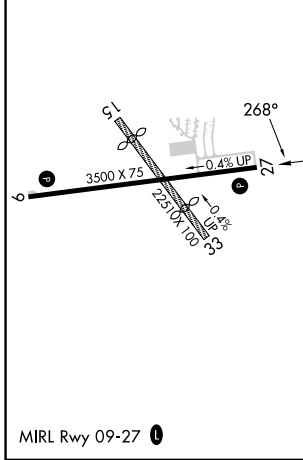
**⚠** Baro-VNAV NA when using Fremont altimeter setting. For uncompensated Baro-VNAV systems, LNAV/VNAV NA below -16°C (4°F) or above 54°C (130°F).  
**⚠** NA When local altimeter setting not received, use Fremont altimeter setting and increase all DA 64 feet, all MDA 80 feet, and LPV and LNAV/VNAV visibility all Cats ¼ mile.  
 DME/DME RNP-0.3 NA. Procedure NA at night.  
 Helicopter visibility reduction below 1 SM NA. Circling NA to Rwy 15 and 33.

**MISSED APPROACH:**  
 Climb to 1500 then climbing left turn to 3300 direct WHALL and hold.

AWOS-AV <b>122.7</b>	GREAT LAKES APP CON* <b>119.8 290.35</b>	UNICOM <b>122.7 (CTAF) 0</b>
-------------------------	---	---------------------------------



ELEV 916	TDZE 912
----------	----------



CATEGORY	A	B	C	D
LPV DA	1254-1 1/8	342 (400-1 1/8)		NA
LNAV/VNAV DA	1236-1 1/8	324 (400-1 1/8)		NA
LNAV MDA	1340-1	428 (500-1)		NA
CIRCLING	1540-1	1780-1 1/4		NA
	624 (700-1)	864 (900-1 1/4)		

EC-1, 26 DEC 2024 to 23 JAN 2025

EC-1, 26 DEC 2024 to 23 JAN 2025