

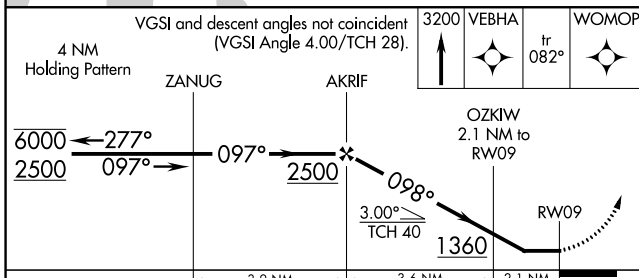
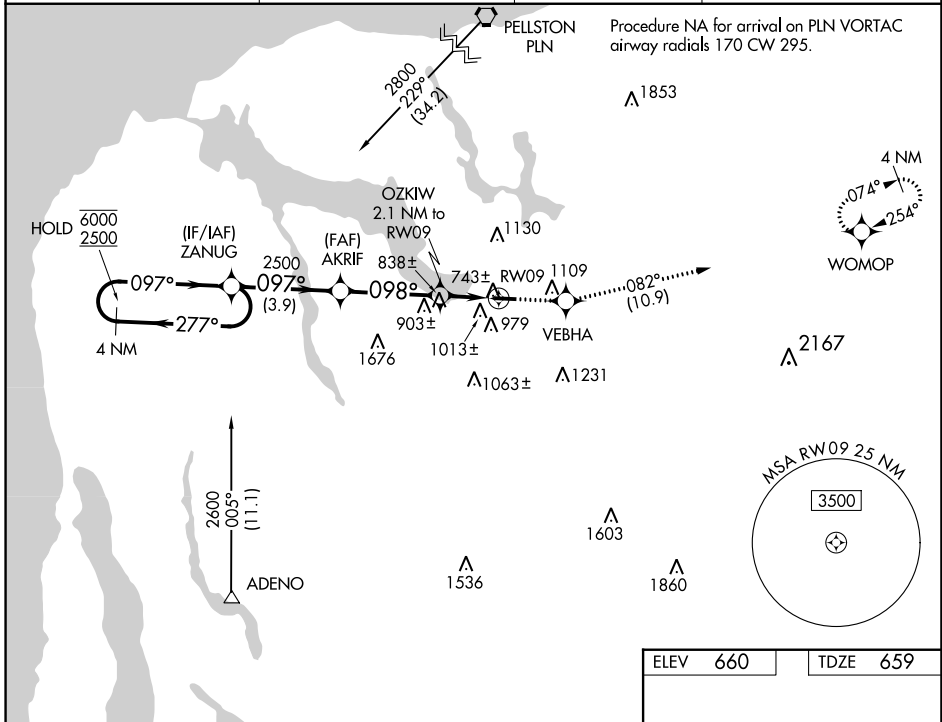
WAAS CH <b>97526</b> <b>W09A</b>	APP CRS <b>098°</b>	Rwy Idg TDZE Apt Elev	<b>3402</b> <b>659</b> <b>660</b>
--	------------------------	-----------------------------	---

# RNAV (GPS) RWY 9

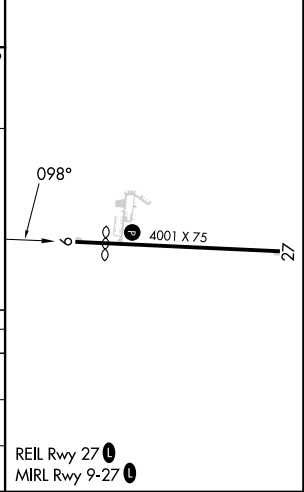
BOYNE CITY MUNI (N98)

RNP APCH - GPS.	MISSED APPROACH: Climb to 3200 direct VEBHA and on track 082° to WOMOP and hold.
<p>▼ Use CVX altimeter setting; when not received, use MGN altimeter setting.</p> <p>▲ NA Procedure NA at night. Rwy 9 helicopter visibility reduction below 1 SM NA.</p>	

CVX AWOS-3P <b>120.0</b>	MINNEAPOLIS CENTER <b>134.6 354.05</b>	UNICOM <b>122.8</b> (CTAF)	<b>122.9</b>
-----------------------------	---	-------------------------------	--------------



ELEV 660	TDZE 659
----------	----------



CATEGORY	A	B	C	D
LP MDA	1060-1	401 (400-1)		NA
INAV MDA	1260-1	601 (600-1)		NA
CIRCLING	1480-1¼ 820 (900-1¼)	1500-1¼ 840 (900-1¼)		NA

EC-1, 26 DEC 2024 to 23 JAN 2025

EC-1, 26 DEC 2024 to 23 JAN 2025