

WAAS CH 49246 W16A	APP CRS 157°	Rwy Idg TDZE Apt Elev	3700 1729 1730
--	------------------------	-----------------------------	---

RNAV (GPS) RWY 16

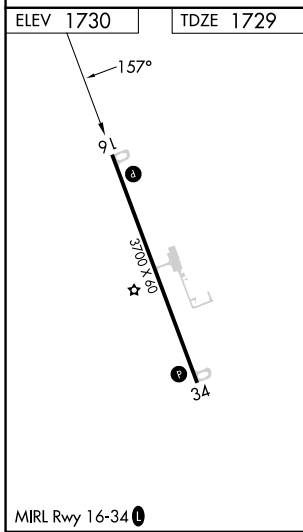
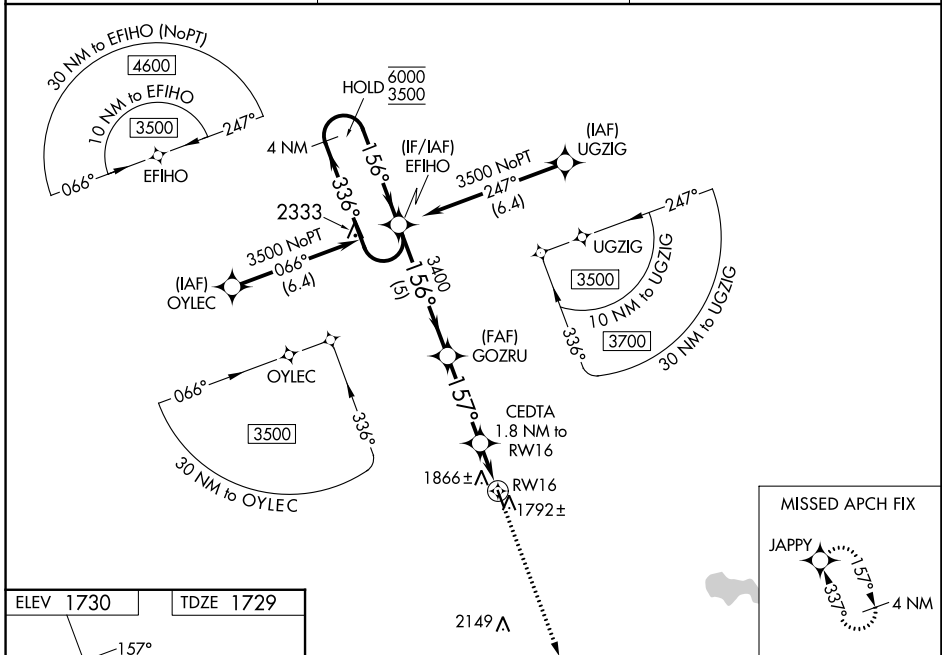
WILDER (6E5)

RNP APCH - GPS.

⚠ For uncompensated Baro-VNAV systems, LNAV/VNAV NA below -18°C or above 54°C. Rwy 16 helicopter visibility reduction below 3/4 SM NA. Baro-VNAV and VDP NA when using MDS altimeter setting. When local altimeter setting not received, use MDS altimeter setting and increase LPV DA to 2055 feet; increase LNAV/VNAV DA to 2200 feet and all visibilities 1/2 SM. Increase all MDAs 80 feet.

MISSED APPROACH: Climb to 3600 direct JAPPY and hold.

AWOS-3P 118.15	MINNEAPOLIS CENTER 126.25 339.8	CTAF 122.90
--------------------------	---	-----------------------



	EFIHO	GOZRU	CEDTA	JAPPY
	4 NM Holding Pattern		1.8 NM to RW16	3600
	6000 ← 336°	3400	1.1 NM to RW16	JAPPY
	3500 → 156°		RW16	
	GP 3.00°	3400	2340	
	TCH 34			
		5 NM	3.3 NM	0.7
				1.1 NM
CATEGORY	A	B	C	D
LPV DA	1979-1	250 (300-1)		NA
LNAV/VNAV DA	2120-1 1/8	391 (400-1 1/8)		NA
LNAV MDA	2120-1	391 (400-1)		NA
CIRCLING	2180-1	2220-1		NA
	450 (500-1)	490 (500-1)		

NC-1, 26 DEC 2024 to 23 JAN 2025

NC-1, 26 DEC 2024 to 23 JAN 2025