

WAAS CH <b>40048</b> <b>W34A</b>	APP CRS <b>337°</b>	Rwy Idg <b>3700</b> TDZE <b>1730</b> Apt Elev <b>1730</b>
--	------------------------	---

# RNAV (GPS) RWY 34

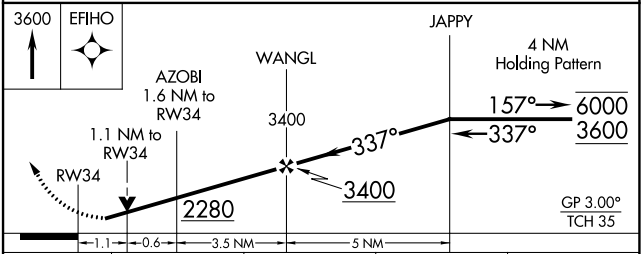
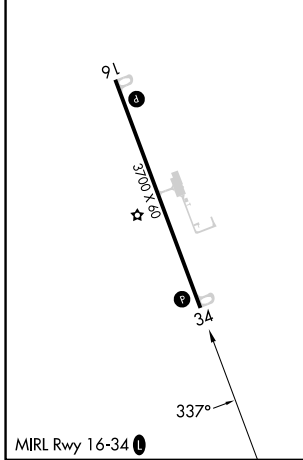
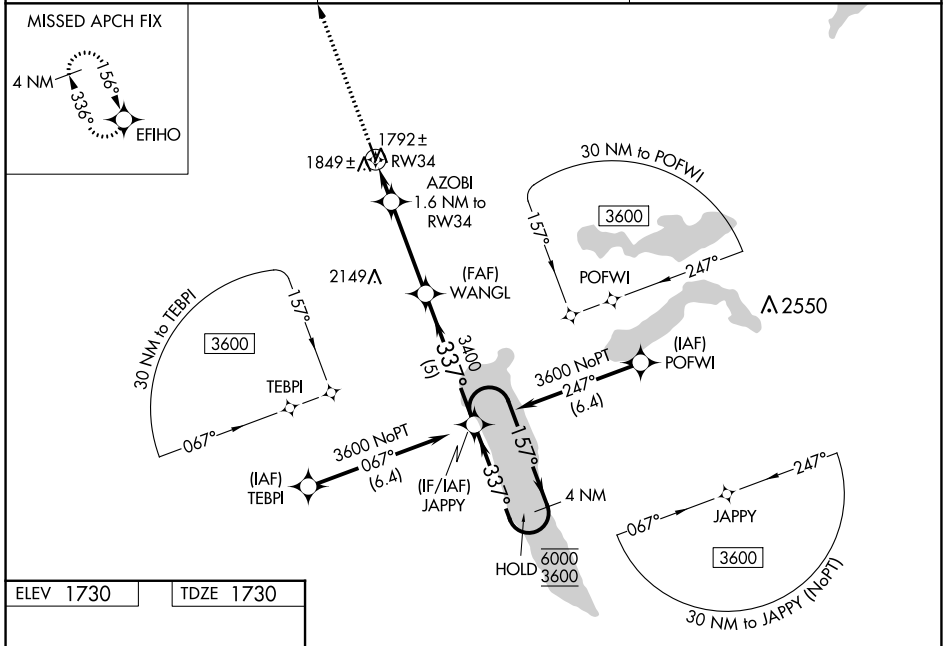
WILDER (6E5)

RNP APCH - GPS.

For uncompensated Baro-VNAV systems, LNAV/VNAV NA below -18°C or above 54°C.  
 Rwy 34 helicopter visibility reduction below 3/4 SM NA. Baro-VNAV and VDP NA when using MDS altimeter setting. When local altimeter setting not received, use MDS altimeter setting and increase LPV DA to 2056 feet; increase LNAV/VNAV DA to 2180 feet and all visibilities 3/4 SM. Increase all MDAs 80 feet.

MISSED APPROACH: Climb to 3600 direct EFIHO and hold.

AWOS-3P <b>118.15</b>	MINNEAPOLIS CENTER <b>126.25 339.8</b>	CTAF <b>122.90</b>
--------------------------	---	-----------------------



CATEGORY	A	B	C	D
LPV DA	1980-1	250 (300-1)		NA
LNAV/VNAV DA	2100-1	370 (400-1)		NA
LNAV MDA	2100-1	370 (400-1)		NA
CIRCLING	2180-1 450 (500-1)	2220-1 490 (500-1)		NA

NC-1, 26 DEC 2024 to 23 JAN 2025

NC-1, 26 DEC 2024 to 23 JAN 2025