

WAAS CH <b>93842</b> <b>W18A</b>	APP CRS <b>179°</b>	Rwy Idg TDZE <b>177</b> Apt Elev <b>177</b>	<b>5002</b>
--	------------------------	---	-------------

# RNAV (GPS) RWY 18

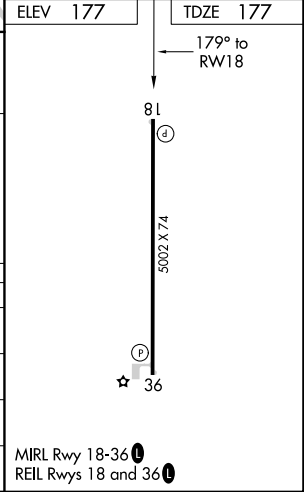
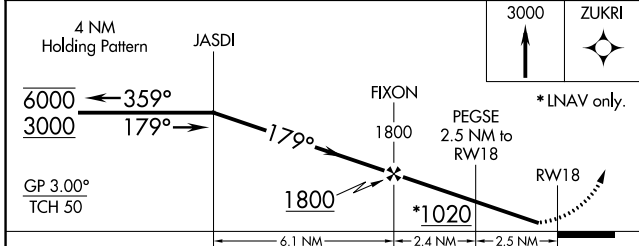
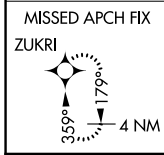
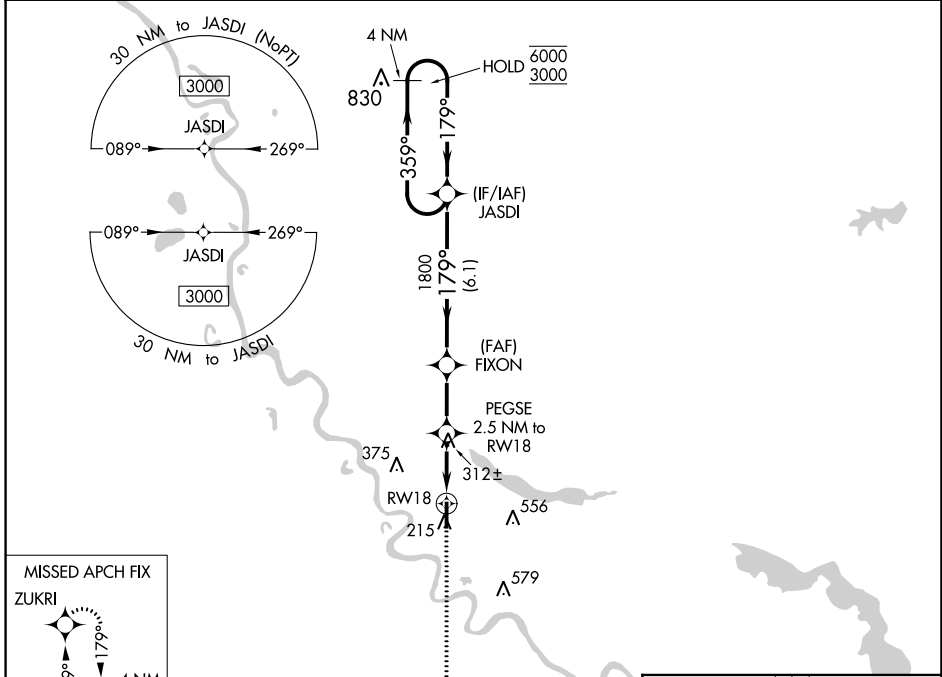
THE RED RIVER (ØR7)

RNP APCH.

▼ Rwy 18 helicopter visibility reduction below ¼ SM NA.  
▲ NA Baro-VNAV NA. Use Natchitoches altimeter setting.

MISSED APPROACH: Climb to 3000 direct ZUKRI and hold, continue climb in hold to 3000.

IER AWOS-3 <b>119.025</b>	POLK APP CON <b>132.05 254.8</b>	CTAF <b>122.9 0</b>
------------------------------	-------------------------------------	------------------------



CATEGORY	A	B	C	D
LPV DA	478-1 301 (400-1)			
RNAV/VNAV DA	632-1 3/8 455 (500-1 3/8)			
RNAV MDA	620-1	443 (500-1)	620-1 3/8	443 (500-1 3/8)
CIRCLING	660-1	483 (500-1)	920-2 1/4 743 (800-2 1/4)	940-2 1/2 763 (800-2 1/2)

SC-4, 26 DEC 2024 to 23 JAN 2025

SC-4, 26 DEC 2024 to 23 JAN 2025

MIRL Rwy 18-36  
REIL Rwy 18 and 36