

LOC/DME I-PUK 111.15 Chan 48 (Y)	APP CRS 162°	Rwy Idg TDZE Apt Elev	10000 69 69
--	------------------------	-----------------------------	--

ILS RWY 16 (SA CAT I & II)

NORTHWEST FLORIDA BEACHES INTL (ECP)

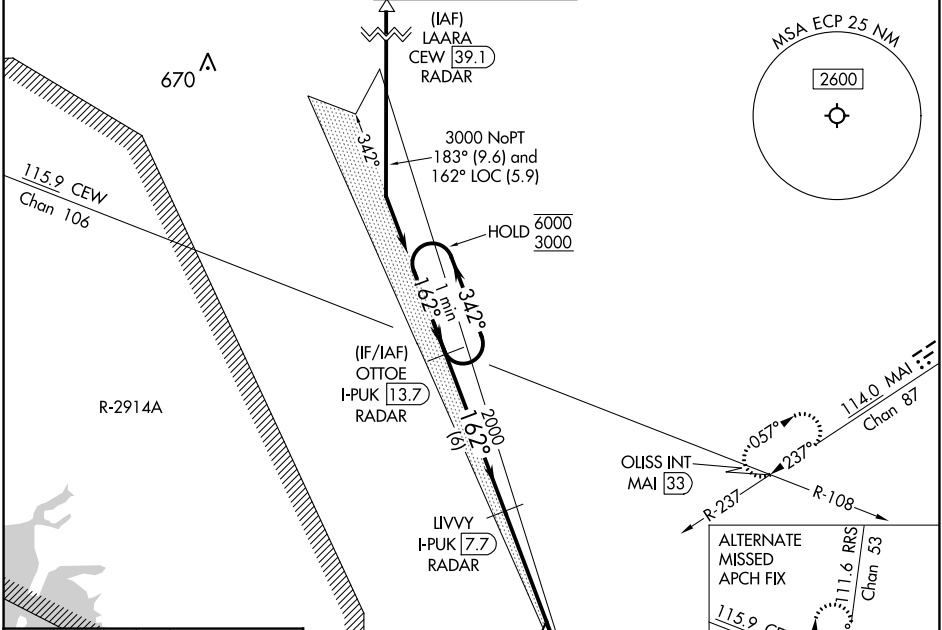
DME required for procedure entry. DME required.

- SA CAT I: Requires specific OPSPEC, MSPEC, or LOA approval and use of HUD to DH.
- SA CAT II: Reduced lighting: requires specific OPSPEC, MSPEC, or LOA approval and use of autoland or HUD to touchdown.

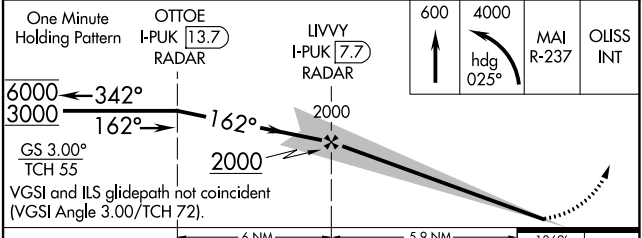
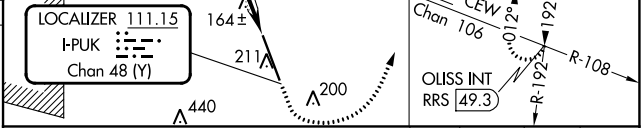
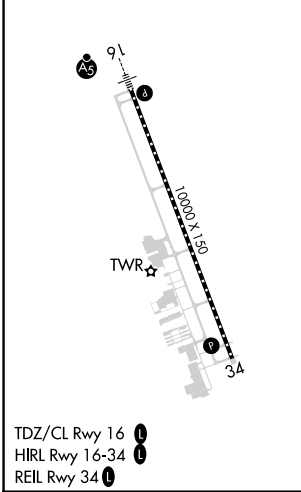


MISSED APPROACH: Climb to 600 then climbing left turn to 4000 on heading 025° and on MAI VORTAC R-237 to OUISS INT/MAI 33 DME and hold, continue climb-in-hold to 4000.

ATIS 119.975	TYNDALL APP CON ★ 125.2 (N above 5000')	PANAMA CITY TOWER★ 118.95 (CTAF) 0	GND CON 121.65	CLNC DEL 123.75
------------------------	---	---	--------------------------	---------------------------



ELEV 69	TDZE 69
----------------	----------------



CATEGORY	A	B	C	D
S-ILS 16	SA CAT I RA 151/14 150 DA 219			
S-ILS 16	SA CAT II RA 101/12 100 DA 169			

SA CATEGORY I & II ILS - SPECIAL AIRCREW & AIRCRAFT CERTIFICATION REQUIRED

SE-3, 26 DEC 2024 to 23 JAN 2025

SE-3, 26 DEC 2024 to 23 JAN 2025