

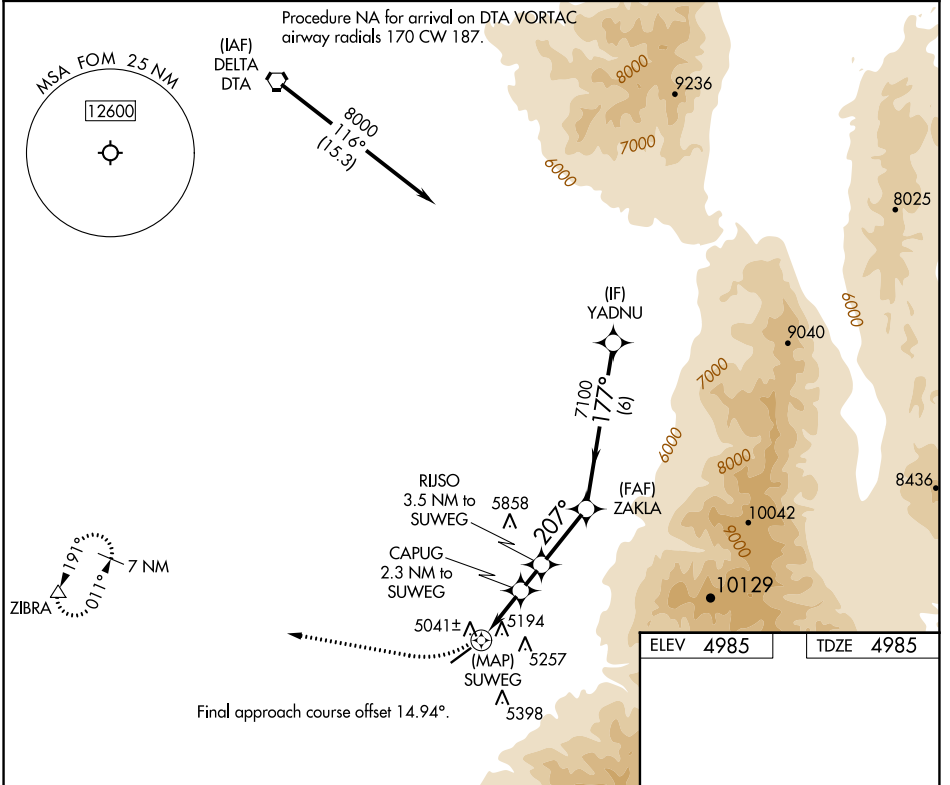
APP CRS	Rwy Idg	<b>5040</b>
<b>207°</b>	TDZE	<b>4985</b>
	Apt Elev	<b>4985</b>

# RNAV (GPS) RWY 22

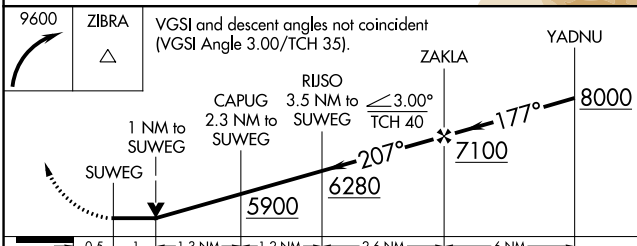
FILLMORE MUNI (FOM)

RNP APCH.	MISSED APPROACH: Climbing right turn to 9600 direct ZIBRA and hold, continue climb-in-hold to 9600.
	Rwy 22 helicopter visibility reduction below 3/4 SM NA.

AWOS-3 <b>133.775</b>	SALT LAKE CITY CENTER <b>125.575 379.275</b>	UNICOM <b>122.8 (CTAF) 0</b>
--------------------------	---	---------------------------------



ELEV 4985	TDZE 4985
-----------	-----------



REIL Rws 4 and 22	MIRL Rwy 4-22 0
-------------------	-----------------

	0.5	1	1.3 NM	1.2 NM	2.6 NM	6 NM
CATEGORY	A		B		C	D
RNAV MDA	5500-1 515 (600-1)		5500-1 515 (600-1 3/8)		6200-3 1215 (1300-3)	NA
CIRCLING	5620-1 635 (700-1)		6200-3 1215 (1300-3)		NA	

SW-4, 26 DEC 2024 to 23 JAN 2025

SW-4, 26 DEC 2024 to 23 JAN 2025