

WAAS CH 69537 W34A	APP CRS 340°	Rwy ldg 3500 TDZE 1482 Apt Elev 1482
--	------------------------	---

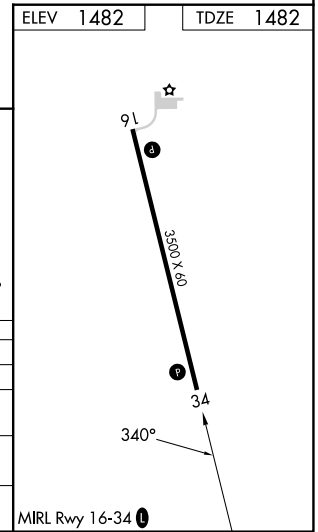
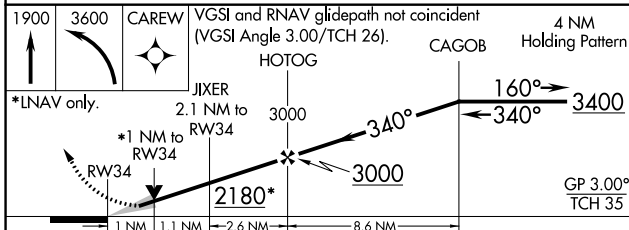
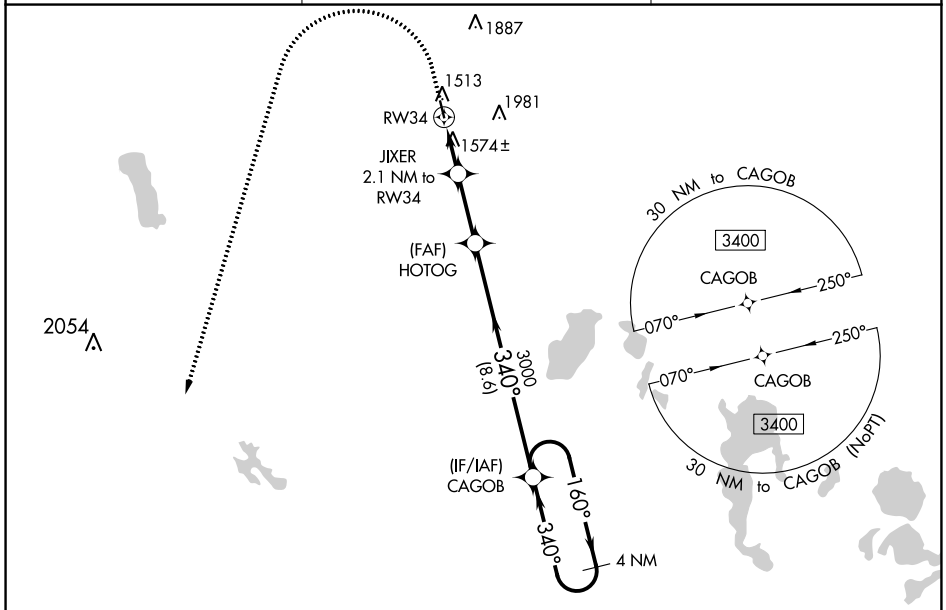
RNAV (GPS) RWY 34

CANDO MUNI (9D7)

▽ DME/DME RNP-0.3 NA. When local altimeter not received, use Devils Lake altimeter setting and increase all DA 63 feet and all MDA 80 feet. Increase LPV visibility 1/8 mile all Cats and LNAV/VNAV visibility 1/4 mile all Cats. Baro-VNAV and VDP NA when using Devils Lake altimeter setting. For uncompensated Baro-VNAV systems, LNAV/VNAV NA below -17°C (0°F) or above 54°C (130°F).

MISSED APPROACH:
Climb to 1900 then climbing left turn to 3600 direct CAREW and hold.

AWOS-3 118.325	MINNEAPOLIS CENTER 124.2 270.3	CTAF 122.9 0
--------------------------	--	-------------------------------



CATEGORY	A	B	C	D
LPV DA	1732-1	250 (300-1)		NA
LNAV/VNAV DA	1871-1 3/8	389 (400-1 3/8)		NA
LNAV MDA	1840-1	358 (400-1)		NA
C CIRCLING	1900-1 418 (500-1)	1940-1 458 (500-1)		NA

NC-1, 26 DEC 2024 to 23 JAN 2025

NC-1, 26 DEC 2024 to 23 JAN 2025