

APP CRS **077°**
 Rwy Idg **5001**
 TDZE **1863**
 Apt Elev **1883**

RNAV (GPS) RWY 8
 SOUTHERN WEST VIRGINIA RGNL (E,B,D)

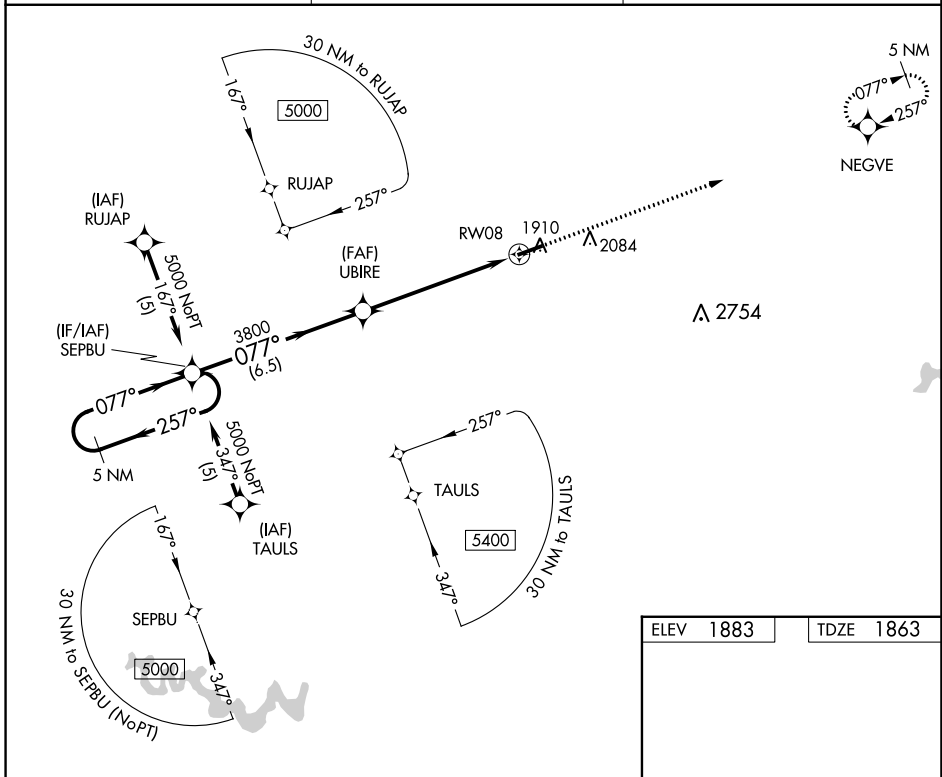
RNP APCH - GPS.
 Obtain local altimeter setting on CTAF; when not received, use Beckley altimeter setting; increase all MDAs 140 feet and visibility LNAV Cat C/D and Circling Cat A/B ¼ SM and Circling Cat C ½ SM.

MISSED APPROACH: Climb to 5000 direct NEGVE and hold.

116 AWOS-3
120.625

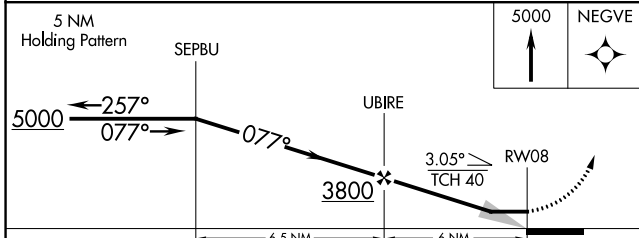
INDIANAPOLIS CENTER
126.575 257.85

UNICOM
122.8 (CTAF) 0



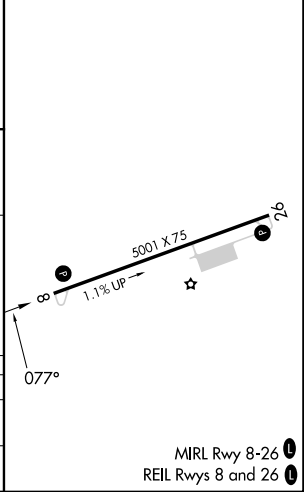
NE-4, 26 DEC 2024 to 23 JAN 2025

NE-4, 26 DEC 2024 to 23 JAN 2025



ELEV **1883** | TDZE **1863**

CATEGORY	A	B	C	D
LNAV MDA	2580-1 717 (700-1)	2580-1¼ 717 (700-1¼)	2580-2	717 (700-2)
CIRCLING	2680-1	797 (800-1)	2760-2½ 877 (900-2½)	2900-3 1017 (1100-3)



MIRL Rwy 8-26
 REIL Rwy 8 and 26