

APP CRS	Rwy Idg	N/A
150°	TDZE	N/A
	Apt Elev	4320

# RNAV (GPS)-A

CHRISTMAS VALLEY (62S)

RNP APCH-GPS.

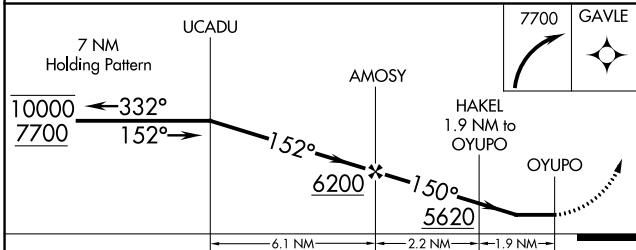
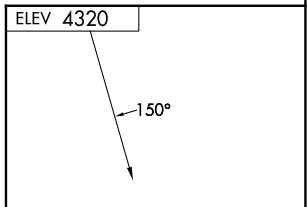
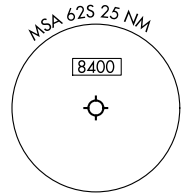
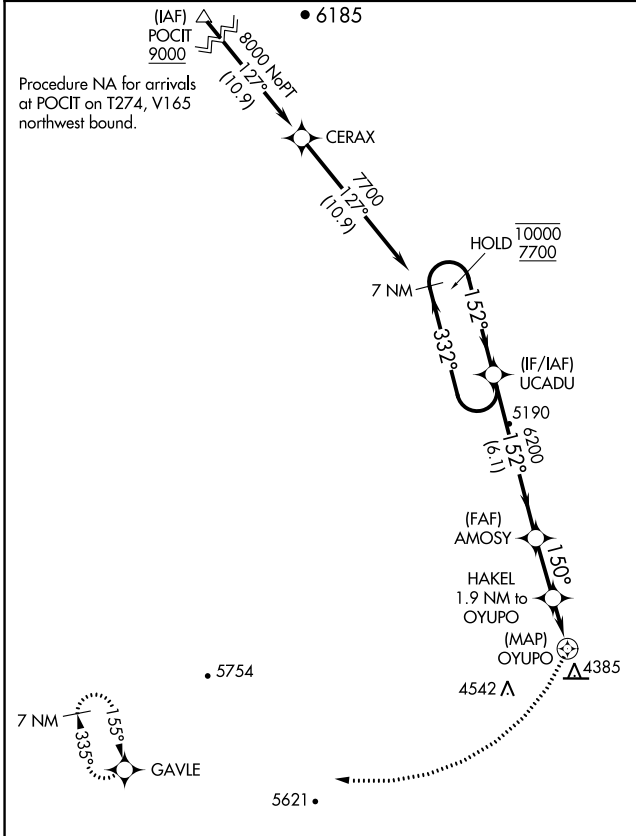
**NA** Rwy 25 helicopter visibility reduction below 1 SM NA. Circling Rwy 25 NA at night. Use Bend Muni altimeter setting.

MISSED APPROACH: Climbing right turn 7700 direct GAVLE and hold.

BDN AWOS-3  
**134.425**

SEATTLE CENTER  
**127.6 346.35**

UNICOM  
**122.8 (CTAF) 0**



CATEGORY	A	B	C	D
CIRCLING	5360-1¼ 1040 (1100-1¼)	5540-1½ 1220 (1300-1½)	5780-3 1460 (1500-3)	NA

MIRL Rwy 7-25 0

NW-1, 26 DEC 2024 to 23 JAN 2025

NW-1, 26 DEC 2024 to 23 JAN 2025