

| | | |
|--|------------------------|--|
| WAAS CH 86839 W35A | APP CRS 350° | Rwy Idg TDZE Apt Elev 4500 2082 2086 |
|--|------------------------|--|

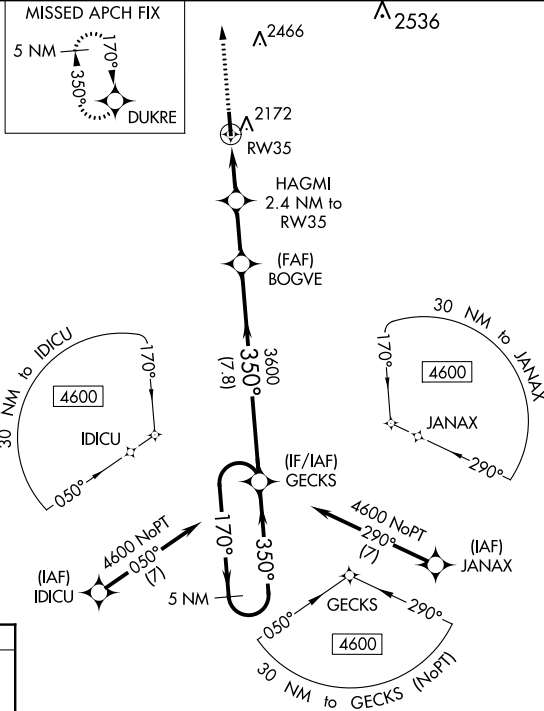
RNAV (GPS) RWY 35

COMANCHE COUNTY (3K8)

Baro-VNAV NA when using Pratt altimeter setting. DME/DME RNP-0.3 NA. Rwy 35 Helicopter visibility reduction below 3/4 SM NA. When local altimeter setting not received, use Pratt altimeter setting and increase LPV DA to 2554 and LNAV/VNAV DA to 2572 and all MDA 120 feet; increase LPV all Cats visibility 1/8 SM, LNAV/VNAV all Cats visibility 1/8 SM, LNAV Cat C visibility 1/4 SM, and increase Circling Cat C visibility 1/2 SM.

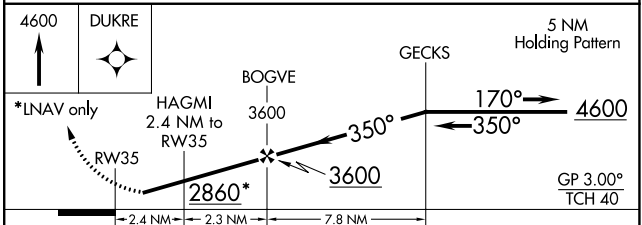
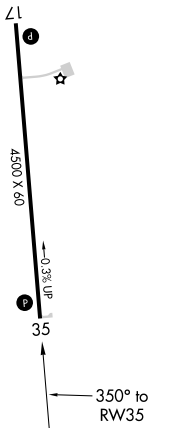
MISSED APPROACH: Climb to 4600 direct DUKRE and hold.

| | | |
|---------------------------|---|----------------------|
| AWOS-3PT 118.05 | KANSAS CITY CENTER 126.95 379.2 | CTAF 122.9 |
|---------------------------|---|----------------------|



| | |
|------------------|------------------|
| ELEV 2086 | TDZE 2082 |
|------------------|------------------|

REIL Rws 17 and 35
MIRL Rwy 17-35



| CATEGORY | A | B | C | D |
|-------------------|------------|-----------------|-------------------------------|----|
| LPV DA | 2443-1 1/4 | 361 (400-1 1/4) | | NA |
| LNAV/VNAV DA | 2461-1 1/4 | 379 (400-1 1/4) | | NA |
| LNAV MDA | 2540-1 | 458 (500-1) | 2540-1 3/8 458 (500-1 3/8) | NA |
| C CIRCLING | 2620-1 | 534 (600-1) | 2940-2 1/2 854 (900-2 1/2) | NA |

RNAV (GPS) RWY 35

NC-2, 26 DEC 2024 to 23 JAN 2025

NC-2, 26 DEC 2024 to 23 JAN 2025