

APP CRS 360°	Rwy Idg TDZE Apt Elev	N/A N/A 489
------------------------	-----------------------------	--

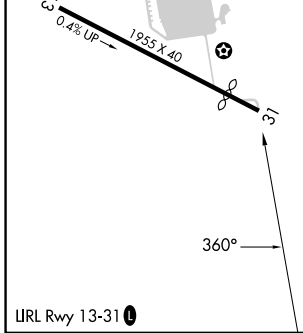
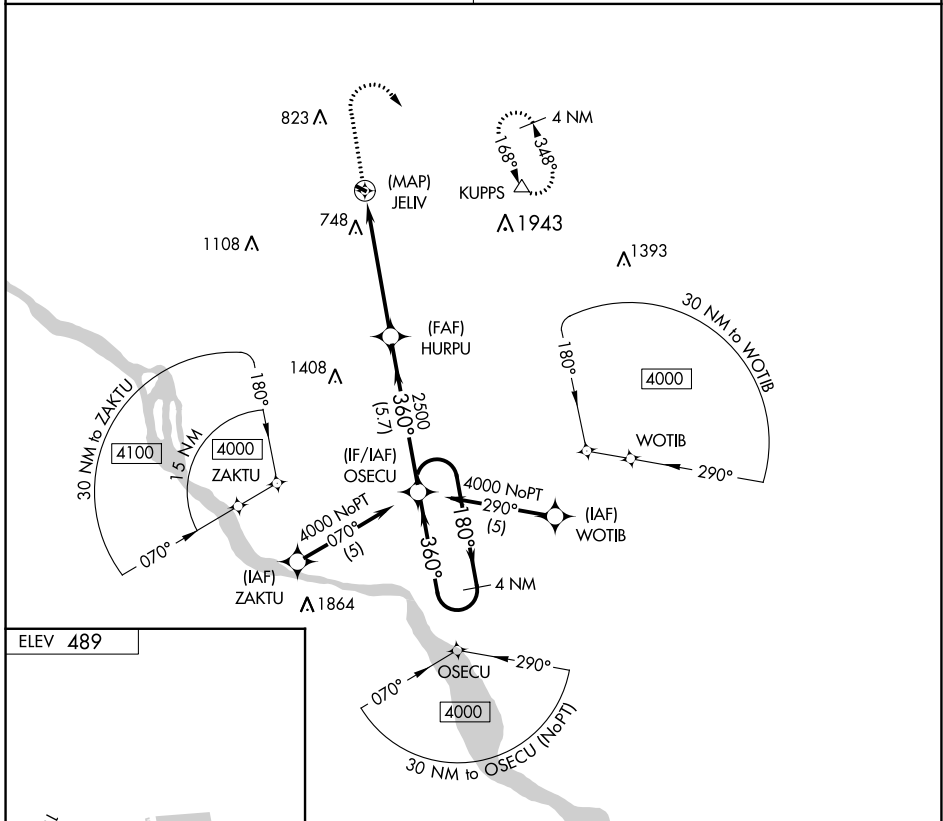
RNAV (GPS)-A

REIGLE FLD (58N)

NA Procedure NA at night. DME/DME RNP-0.3 NA. Visibility reduction by helicopters NA. Use Harrisburg Intl altimeter setting, when not received, use Fort Indiantown Gap altimeter setting.

MISSED APPROACH: Climb to 1680 then climbing right turn to 3000 direct KUPPS and hold.

HARRISBURG APP CON 118.25 269.45 (001°-079°) 126.45 281.525 (080°-210°) 124.1 273.525 (211°-360°)		UNICOM 122.8 (CTAF) 0
---	--	---------------------------------



1680	3000	KUPPS	4 NM Holding Pattern
OSECU HURPU JELIV		2500	180° → 4000 ← 360°
5.3 NM		5.7 NM	
CATEGORY	A	B	C D
CIRCLING	1260-1 771 (800-1)	1320-1¼ 831 (900-1¼)	NA

NE-4, 26 DEC 2024 to 23 JAN 2025

NE-4, 26 DEC 2024 to 23 JAN 2025