

APP CRS	Rwy Idg	N/A
166°	TDZE	N/A
	Apt Elev	28

RNAV (GPS)-A

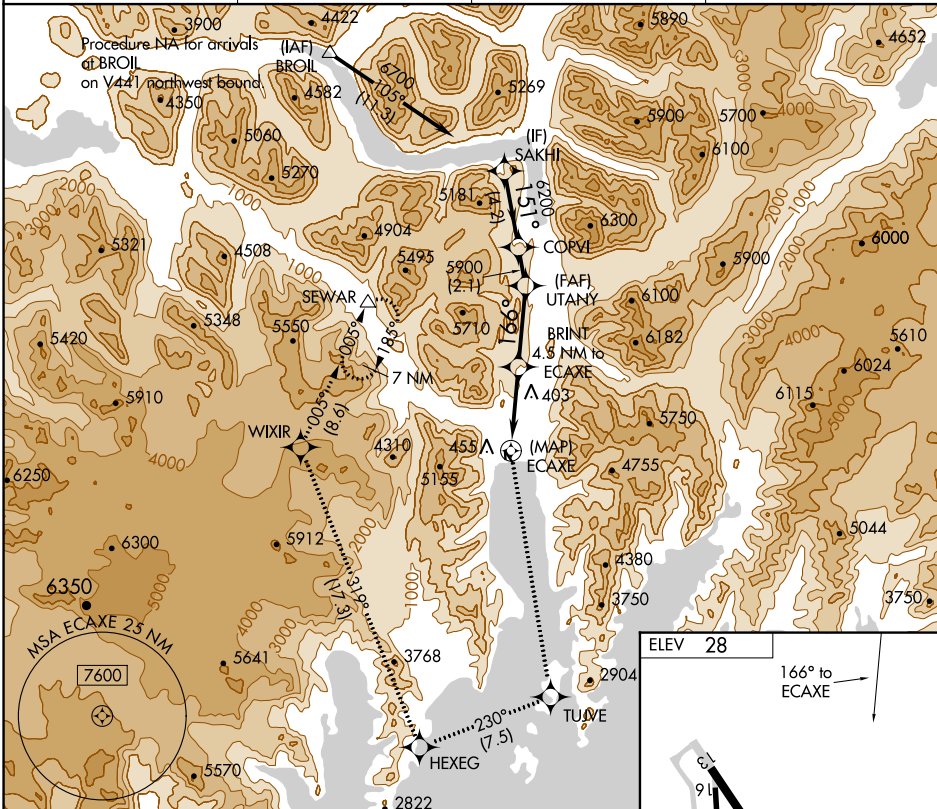
SEWARD (SWD) (PAWD)

RNP APCH-GPS.

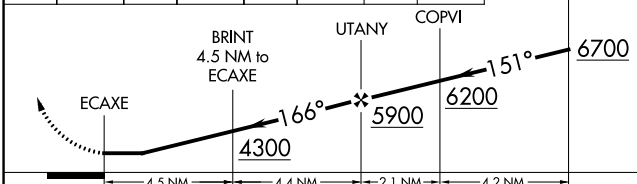
▼ When local altimeter setting not received, procedure NA.
 ▲ Circling NA southwest Rwy 13 and west of Rwy 34.
 Procedure NA at night. Rwy 13, 16, 31 and 34 helicopter visibility reduction below 1 SM NA.
 ❄️ -4°C

MISSED APPROACH: Climb to 9500 direct TUJVE and on track 230° to HEXEG and on track 319° to WIXIR and on track 005° to SEWARD and hold.

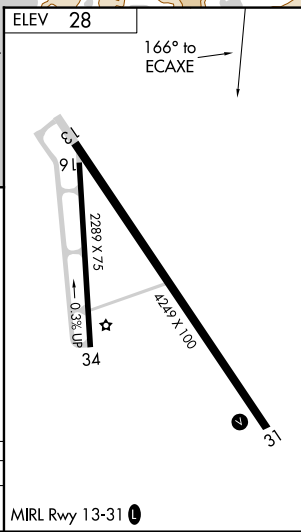
ASOS	ANCHORAGE CENTER	KENAI RADIO	CTAF
135.2	119.7 269.0	122.6	122.9 0



9500	TUJVE	tr 230°	HEXEG	tr 319°	WIXIR	tr 005°	SEWARD	SAKHI
↑	✦	✦	✦	✦	✦	✦	△	✦



CATEGORY	A	B	C	D
CIRCLING	2660-1¼ 2632 (2700-1¼)	2660-1½ 2632 (2700-1½)	NA	



AK, 26 DEC 2024 to 20 FEB 2025

AK, 26 DEC 2024 to 20 FEB 2025