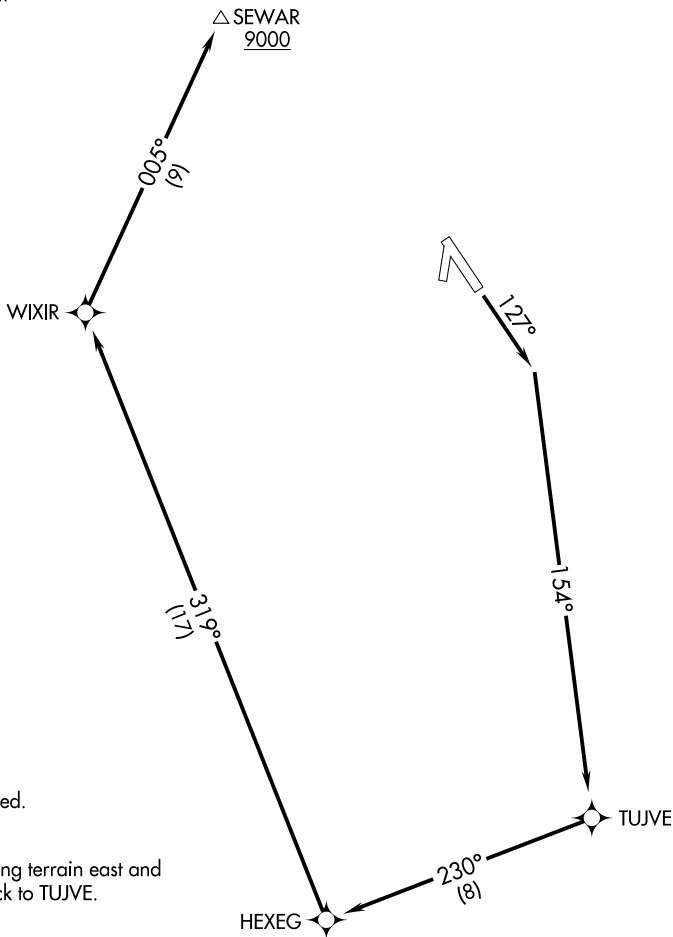


(SEWAR1.SEWAR) 17229

SEWAR ONE DEPARTURE (OBSTACLE) (RNAV)

SEWARD (SWD)(PAWD)
AL-10600 (FAA) SEWARD, ALASKA

ANCHORAGE CENTER
119.7 269.0
KENAI RADIO
122.6
CTAF
122.9



NOTE: GPS required.

NOTE: RNAV 1.

NOTE: Rapidly rising terrain east and west of track to TUJVE.

TAKEOFF MINIMUMS

Rwy 31, 34, 16: NA- Terrain.

Rwy 13: Standard with minimum climb of 490' per NM to 2700.

TAKEOFF OBSTACLE NOTES

Rwy 13: Terrain beginning 49' from DER, 14' left of centerline, up to 36' MSL.

Terrain beginning 135' from DER, 142' right of centerline, up to 23' MSL.

NOTE: Chart not to scale.

DEPARTURE ROUTE DESCRIPTION

TAKEOFF RUNWAY 13: Climb to 9000 on heading 127° to intercept course 154° to TUJVE, and on track 230° to HEXEG, and on track 319° to WIXIR, and on track 005° to SEWAR before proceeding on course.

AK, 26 DEC 2024 to 20 FEB 2025

AK, 26 DEC 2024 to 20 FEB 2025

SEWARD ONE DEPARTURE (OBSTACLE) (RNAV)
(SEWAR1.SEWAR) 30JUN11

SEWARD, ALASKA
SEWARD (SWD)(PAWD)