

APCH CRS	Rwy Idg	<b>4088</b>
<b>176°</b>	TDZE	<b>387</b>
	Arpt Elev	<b>387</b>

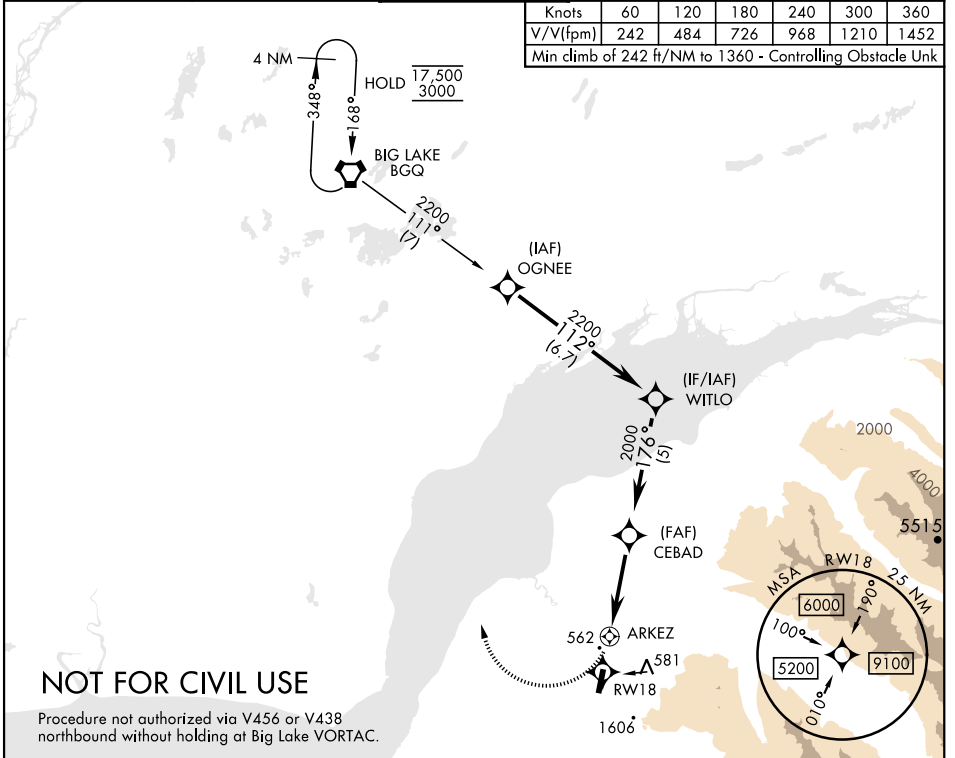
[USA] BRYANT AAF (FORT RICHARDSON) (FRN) (PAFR)

RNP APCH - GPS  
 \* Circling not authorized E of Rwy 18-36.

MISSED APPROACH: Climbing right turn to 3000 direct BGG VORTAC and hold.

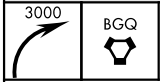
AWOS-3 <b>134.25</b>	ANCHORAGE APP CON <b>118.6 290.5</b>	TOWER ★ <b>125.0</b> (CTAF) <b>0 254.35</b>	GND CON <b>121.25 239.25</b>	CLNC DEL <b>119.1 363.2</b>
-------------------------	---	--	---------------------------------	--------------------------------

Knots	60	120	180	240	300	360
V/V(fpm)	242	484	726	968	1210	1452
Min climb of 242 ft/NM to 1360 - Controlling Obstacle Unk						

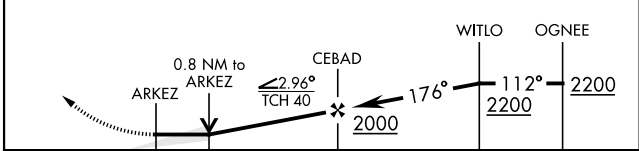


**NOT FOR CIVIL USE**

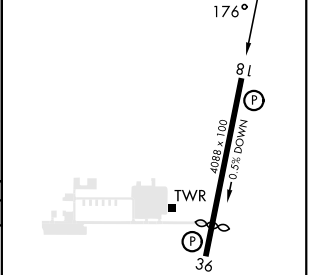
Procedure not authorized via V456 or V438 northbound without holding at Big Lake VORTAC.



ELEV	<b>387</b>	TDZE	<b>387</b>
Rwy 36 Idg 3418'			



CATEGORY	A		B		C		D	
LNAV MDA	1100-1½	713	(800-1½)		1100-2	713	(800-2)	
CIRCLING *	1100-1½	713	(800-1½)		1100-2	713	(800-2)	
					1620-3	1233	(1300-3)	



MIRL Rwy 18-36  
 REIL Rwy 18-36

AK, 26 DEC 2024 to 20 FEB 2025

AK, 26 DEC 2024 to 20 FEB 2025