

WAAS CH <b>86636</b> <b>W14A</b>	APP CRS <b>144°</b>	Rwy Idg TDZE Apt Elev	<b>3600</b> <b>1601</b> <b>1604</b>
--	------------------------	-----------------------------	---

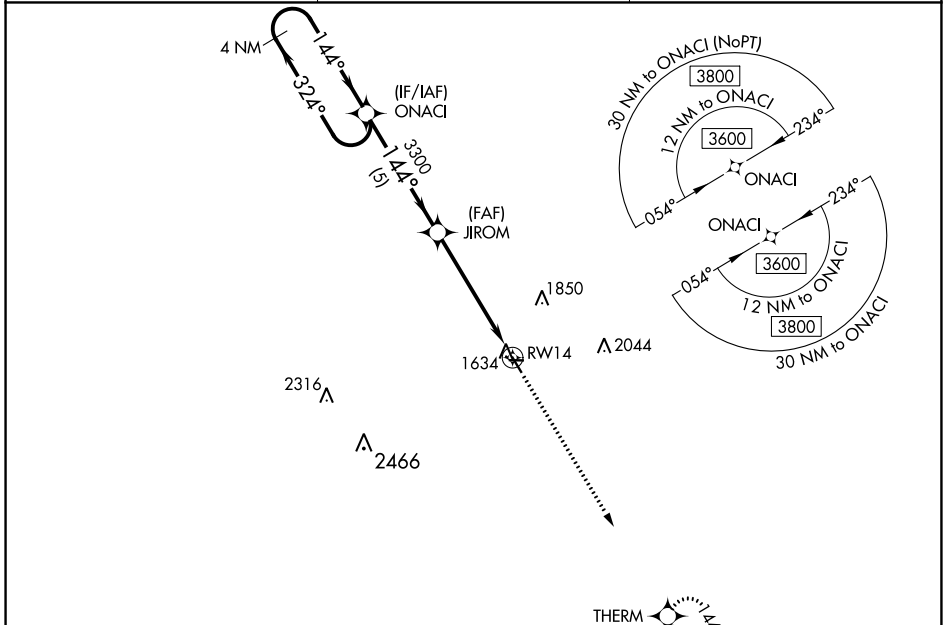
# RNAV (GPS) RWY 14

EDGELEY MUNI (51D)

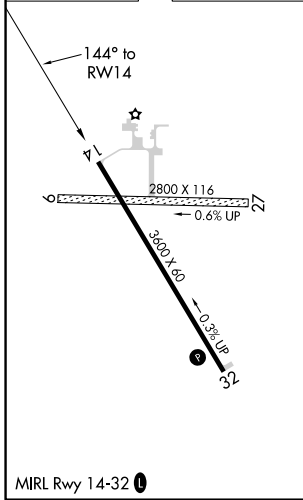
**⚠** Baro-VNAV NA. Use Jamestown altimeter setting; when not received, use Oakes altimeter setting and increase all DA 10 feet and all MDA 20 feet; increase LPV and LNAV/VNAV all Cats visibility 1/8 mile. DME/DME RNP-0.3 NA. Procedure NA at night. Circling NA to Rwy's 9 and 27.

**⚠** NA MISSED APPROACH: Climb to 3600 direct THERM and hold.

JMS ASOS <b>118.425</b>	MINNEAPOLIS CENTER <b>124.2 270.3</b>	UNICOM <b>122.8 (CTAF) 0</b>
----------------------------	--	---------------------------------



ELEV 1604	TDZE 1601
-----------	-----------



VGSI and RNAV glidepath not coincident.

4 NM Holding Pattern	ONACI	JIROM	RWY 14	
3600	3300			
GP 3.00° TCH 40	5 NM	5.2 NM		
3600	THERM			
↑	✦			
CATEGORY	A	B	C	D
LPV DA	1946-1/8	345 (400-1/8)		NA
LNAV/VNAV DA	1946-1/8	345 (400-1/8)		NA
LNAV MDA	2200-1	599 (600-1)		NA
<b>C</b> CIRCLING	2200-1	596 (600-1)		NA

NC-1, 26 DEC 2024 to 23 JAN 2025

NC-1, 26 DEC 2024 to 23 JAN 2025