

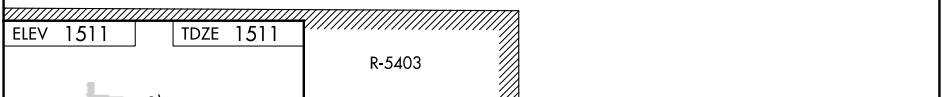
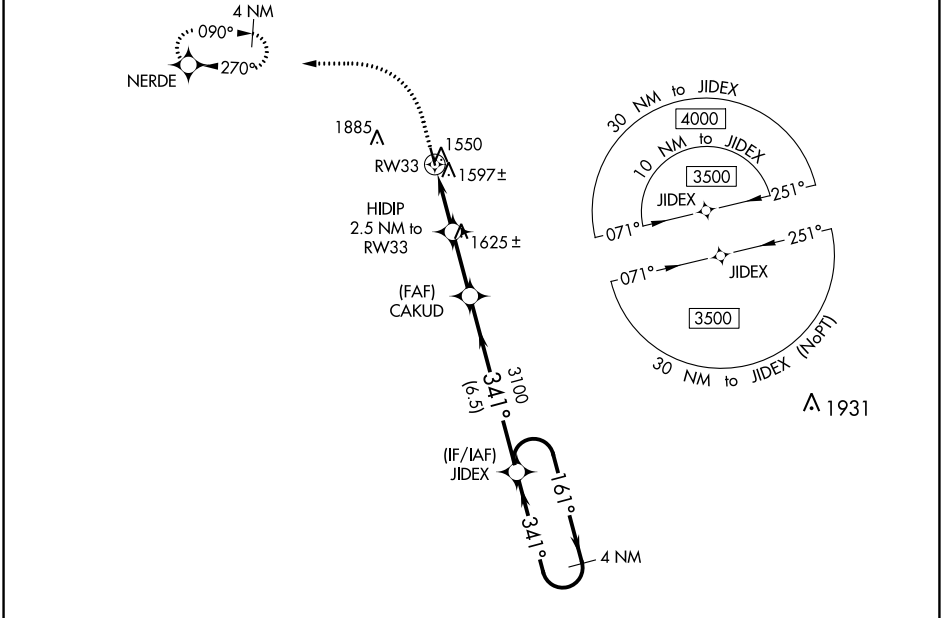
WAAS CH <b>53540</b> <b>W33A</b>	APP CRS <b>341°</b>	Rwy ldg <b>3500</b> TDZE <b>1511</b> Apt Elev <b>1511</b>
--	------------------------	---

# RNAV (GPS) RWY 33

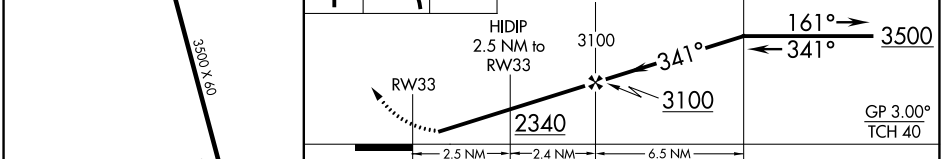
LAKOTA MUNI (5L $\emptyset$ )

RNP APCH - GPS.	<p><b>▼</b> Baro-VNAV NA. Rwy 33 helicopter visibility reduction below <math>\frac{3}{4}</math> SM NA.  <b>▲</b> NA Circling Rwy 15 NA at night. Use Devils Lake altimeter setting.</p>	<p>MISSED APPROACH: Climb to 2300 then climbing left turn to 3300 direct NERDE and hold.</p>
-----------------	---	--

DVL AWOS-3PT <b>125.875</b>	MINNEAPOLIS CENTER <b>132.15 269.6</b>	UNICOM <b>122.8 (CTAF) <math>\emptyset</math></b>
--------------------------------	---	--



ELEV 1511	TDZE 1511	R-5403	2300	3300	NERDE	VGSI and RNAV glidepath not coincident (VGSI Angle 3.00/TCH 26).
-----------	-----------	--------	------	------	-------	--



CATEGORY	A	B	C	D
LPV DA	1827-1 $\frac{1}{8}$	316 (400-1 $\frac{1}{8}$ )		NA
LNAV/VNAV DA	1827-1 $\frac{1}{8}$	316 (400-1 $\frac{1}{8}$ )		NA
LNAV MDA	1920-1	409 (500-1)	1920-1 $\frac{1}{8}$ 409 (500-1 $\frac{1}{8}$ )	NA
<b>C</b> CIRCLING	2080-1 569 (600-1)	2200-1 689 (700-1)	2320-2 $\frac{1}{4}$ 809 (900-2 $\frac{1}{4}$ )	NA

NC-1, 26 DEC 2024 to 23 JAN 2025

NC-1, 26 DEC 2024 to 23 JAN 2025