

# RNAV (GPS) RWY 35

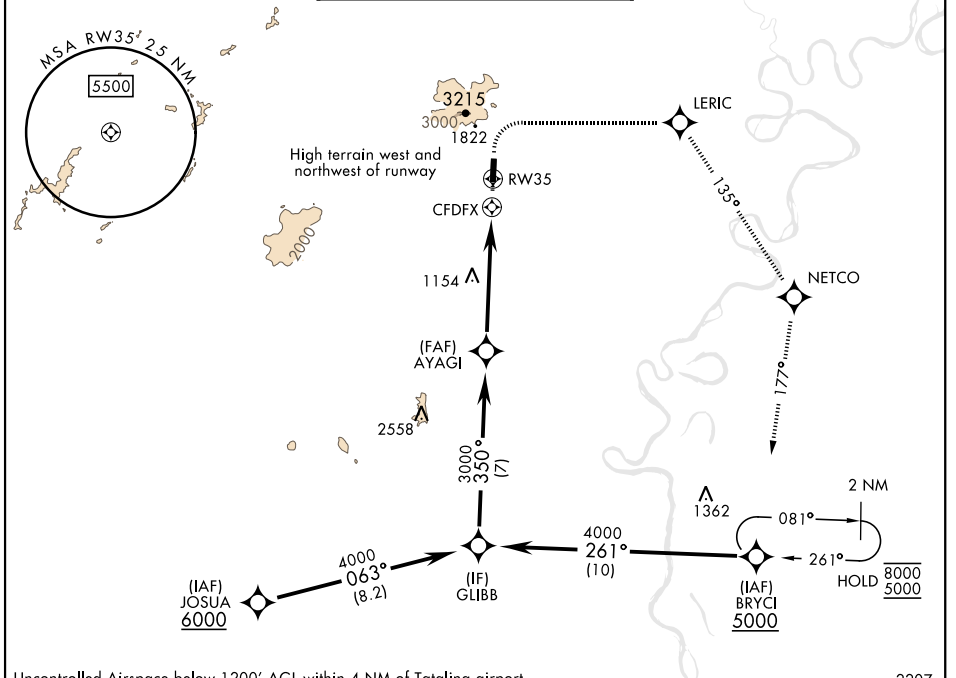
APCH CRS	Rwy Idg	3820
350°	TDZE	925
	Arprt Elev	933

[USAF]

TATALINA LRSS (PATL)

RNP APCH	MISSED APPROACH: (Do not exceed 165 KIAS until initial turn completion). Climb to 1500 then climbing right turn to 5000 direct LERIC, track 135° to NETCO, track 177° to BRYCI and hold.
----------	--

KENAI RADIO 122.3	UNICOM 126.2 (CTAF) 364.2	AWOS-3
----------------------	------------------------------	--------



AK, 26 DEC 2024 to 20 FEB 2025

AK, 26 DEC 2024 to 20 FEB 2025

Uncontrolled Airspace below 1200' AGL within 4 NM of Tatalina airport

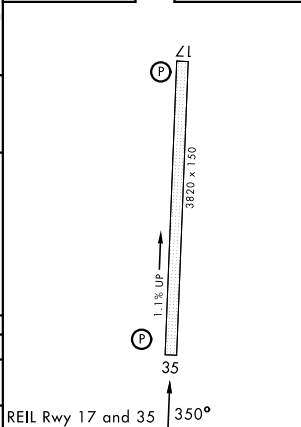
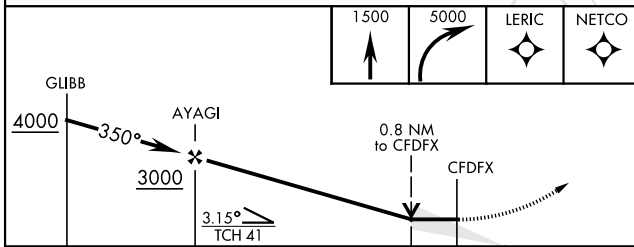
2207 A

**NOT FOR CIVIL USE**

EMERG SAFE ALT 100 NM 12,000

**MILITARY CERTIFIED AIRCREWS OR AUTHORIZED CONTRACT AIRCRAFT ONLY**

ELEV 933	TDZE 925
----------	----------



CATEGORY	A	B	C	D
LNVA MDA	1500-1¼	575 (600-1¼)	1520-1¾	NOT AUTHORIZED
CIRCLING	NOT AUTHORIZED			

REIL Rwy 17 and 35 350°

# RNAV (GPS) RWY 35