

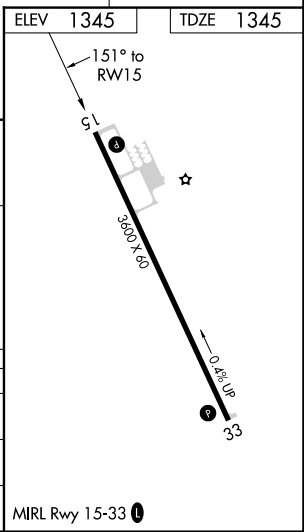
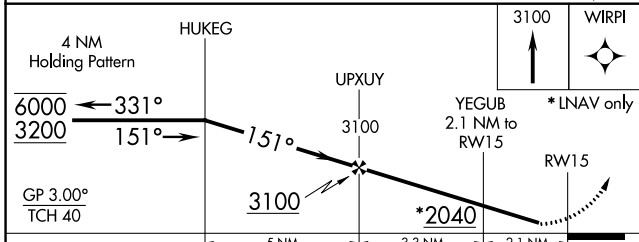
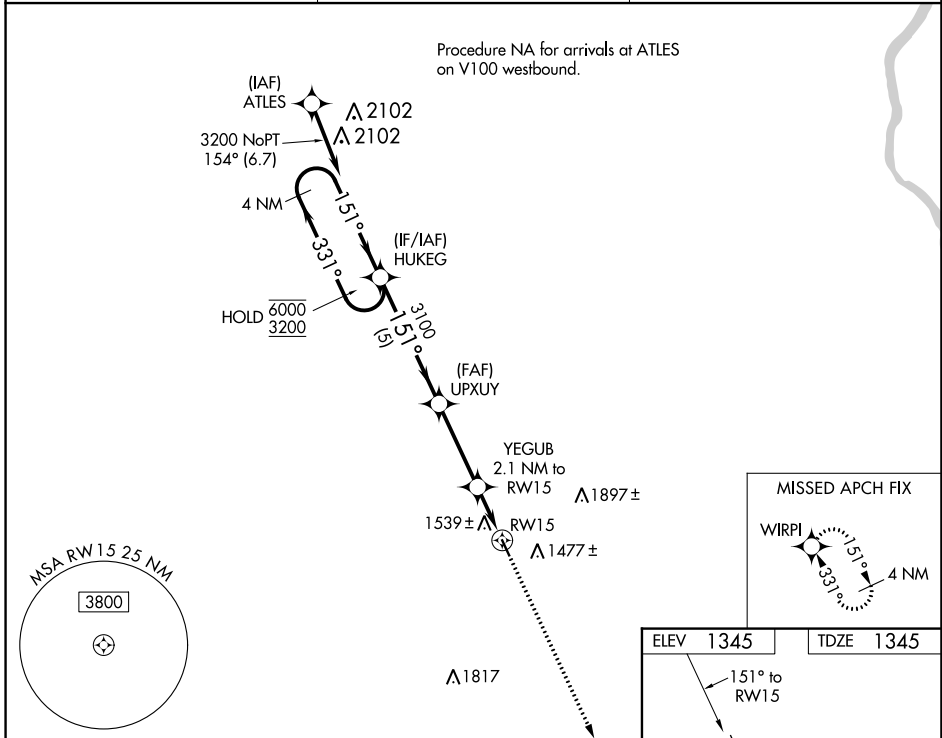
WAAS CH <b>99327</b> <b>W15A</b>	APP CRS <b>151°</b>	Rwy Idg TDZE Apt Elev	<b>3600</b> <b>1345</b> <b>1345</b>
--	------------------------	-----------------------------	---

# RNAV (GPS) RWY 15

PENDER MUNI (ØC4)

RNP APCH.	<p>▼ Rwy 15 helicopter visibility reduction below 3/4SM NA. Baro-VNAV NA. Use Wayne altimeter setting; when not received, use Sioux City altimeter setting: increase LPV DA to 1722 feet, LNAV/VNAV DA to 1934 feet and all MDAs 60 feet.</p> <p>▲ NA MISSED APPROACH: Climb to 3100 direct WIRPI and hold.</p>
-----------	---

LCG AWOS-3 <b>120.125</b>	SIOUX CITY APP CON * <b>124.6 307.0</b>	CTAF <b>122.9</b>
------------------------------	--	----------------------



CATEGORY	A	B	C	D
LPV DA	1678-1	333 (400-1)		NA
LNAV/VNAV DA	1890-17/8	545 (600-17/8)		NA
LNAV MDA	1840-1	495 (500-1)		NA

NC-2, 26 DEC 2024 to 23 JAN 2025

NC-2, 26 DEC 2024 to 23 JAN 2025