

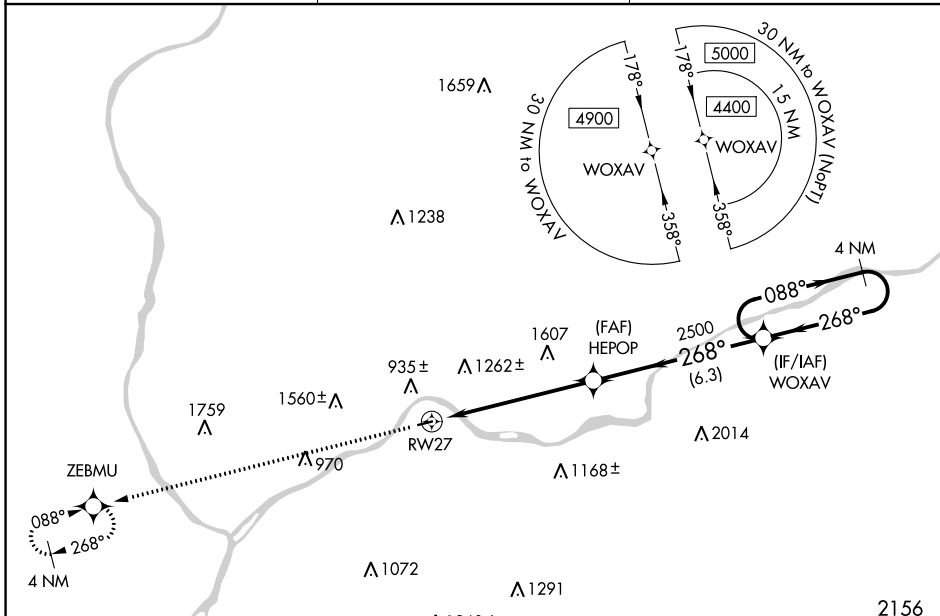
APP CRS	Rwy Idg	3000
268°	TDZE	559
	Apt Elev	559

RNAV (GPS) RWY 27

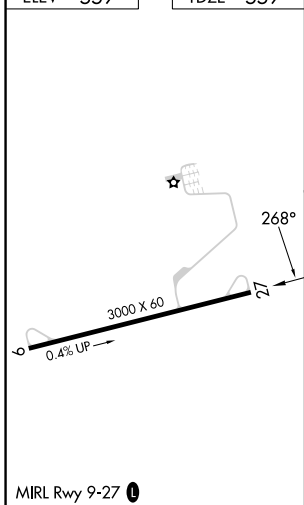
DANVILLE (8N8)

RNP APCH - GPS.		MISSED APPROACH: Climb to 4400 direct ZEBMU and hold, continue climb-in-hold 4400.
▼	Use Williamsport altimeter setting; when not received, procedure NA.	
▲ NA	Procedure NA at night. Rwy 27 helicopter visibility reduction below 1 SM NA.	

IPT ASOS 125.225	WILKES-BARRE APP CON 126.3 256.7	UNICOM 122.8 (CTAF) ①
----------------------------	--	---------------------------------



ELEV 559	TDZE 559
----------	----------



4400	ZEBMU	Visual Segment - Obstacles.	4 NM Holding Pattern
RWY 27		HEPOP	WOXAV
6 NM		6.3 NM	4400
088°		268°	268°

CATEGORY	A	B	C	D
LNAV MDA	1540-1¼ 981 (1000-1¼)	1540-1½ 981 (1000-1½)	NA	

NE-4, 26 DEC 2024 to 23 JAN 2025

NE-4, 26 DEC 2024 to 23 JAN 2025