

APP CRS	Rwy Idg	5000
011°	TDZE	65
	Apt Elev	65

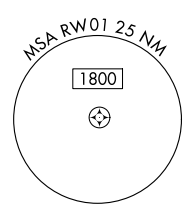
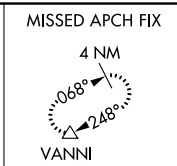
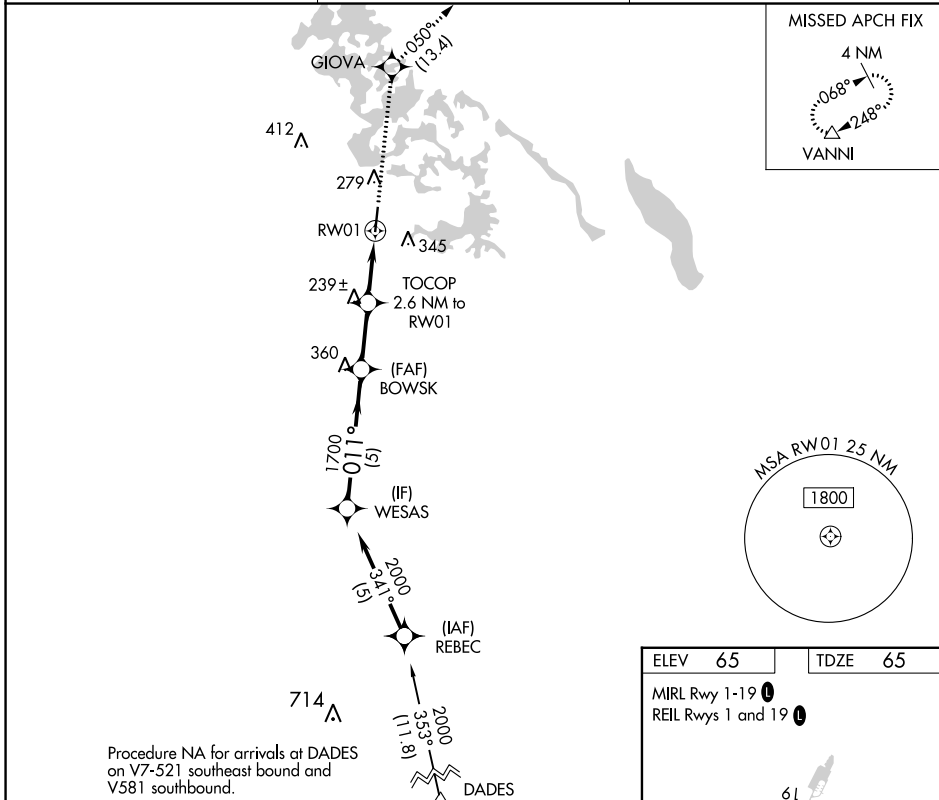
RNAV (GPS) RWY 1

INVERNESS (INF)

⚠ When local altimeter setting not received, use Ocala altimeter setting and increase all MDA 60 feet; and increase LNAV Cat C visibility 1/8 mile and Circling Cat C visibility 1/4 mile.
⚠ DME/DME RNP-0.3 NA. Visibility reduction by helicopters NA. Procedure NA at night.

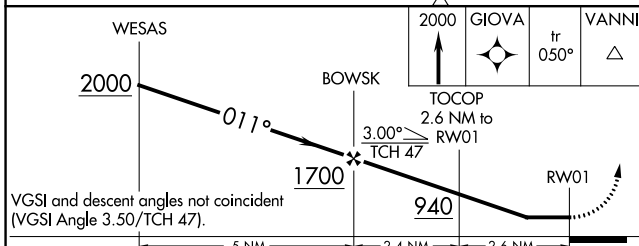
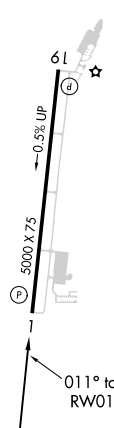
MISSED APPROACH: Climb to 2000 direct GIOVA and on track 050° to VANNI and hold.

AWOS-3 119.975	JACKSONVILLE APP CON 118.6 251.15	UNICOM 122.725 (CTAF) 1
--------------------------	---	-----------------------------------



Procedure NA for arrivals at DADES on V7-521 southeast bound and V581 southbound.

ELEV 65	TDZE 65
MIRL Rwy 1-19 1	REIL Rwys 1 and 19 1



CATEGORY	A	B	C	D
LNAV MDA	500-1	435 (500-1)	500-1 1/4 435 (500-1 1/4)	NA
CIRCLING	660-1	595 (600-1)	660-1 1/2 595 (600-1 1/2)	NA

SE-3, 26 DEC 2024 to 23 JAN 2025

SE-3, 26 DEC 2024 to 23 JAN 2025