

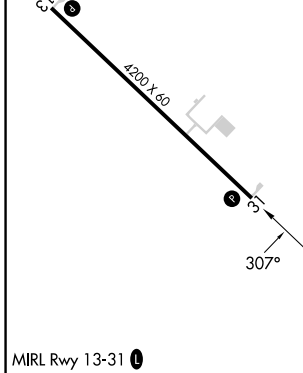
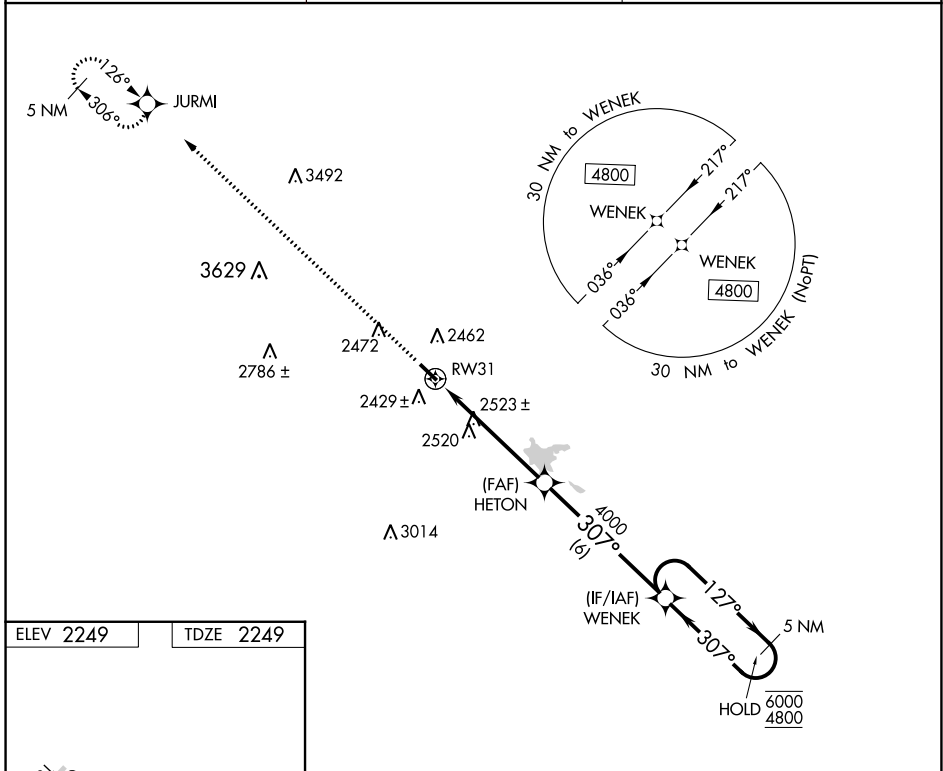
APP CRS 307°	Rwy Idg 4200
	TDZE 2249
	Apt Elev 2249

RNAV (GPS) RWY 31

DUNN COUNTY WEYDAHL FLD (9Y1)

RNP APCH.	MISSED APPROACH: Climb to 4800 direct JURMI and hold.
<p>▼ Use Watford City altimeter setting, when not received, use Dickinson altimeter setting: increase all MDA's 40 feet and visibility Cat B ¼ SM; increase Circling visibility Cat C ¼ SM.</p> <p>▲ NA</p>	

AWOS-3PT 118.525	MINNEAPOLIS CENTER 124.25 236.825	CTAF 122.9
----------------------------	---------------------------------------------	----------------------



4800	JURMI	5 NM Holding Pattern															
↑	✧																
<table border="1"> <thead> <tr> <th>CATEGORY</th> <th>A</th> <th>B</th> <th>C</th> <th>D</th> </tr> </thead> <tbody> <tr> <td>LNAV MDA</td> <td>2960-1</td> <td>711 (800-1)</td> <td>2960-2 711 (800-2)</td> <td>NA</td> </tr> <tr> <td>C CIRCLING</td> <td>2960-1</td> <td>711 (800-1)</td> <td>2960-2 711 (800-2)</td> <td>NA</td> </tr> </tbody> </table>	CATEGORY	A	B	C	D	LNAV MDA	2960-1	711 (800-1)	2960-2 711 (800-2)	NA	C CIRCLING	2960-1	711 (800-1)	2960-2 711 (800-2)	NA		
CATEGORY	A	B	C	D													
LNAV MDA	2960-1	711 (800-1)	2960-2 711 (800-2)	NA													
C CIRCLING	2960-1	711 (800-1)	2960-2 711 (800-2)	NA													

NC-1, 26 DEC 2024 to 23 JAN 2025

NC-1, 26 DEC 2024 to 23 JAN 2025