

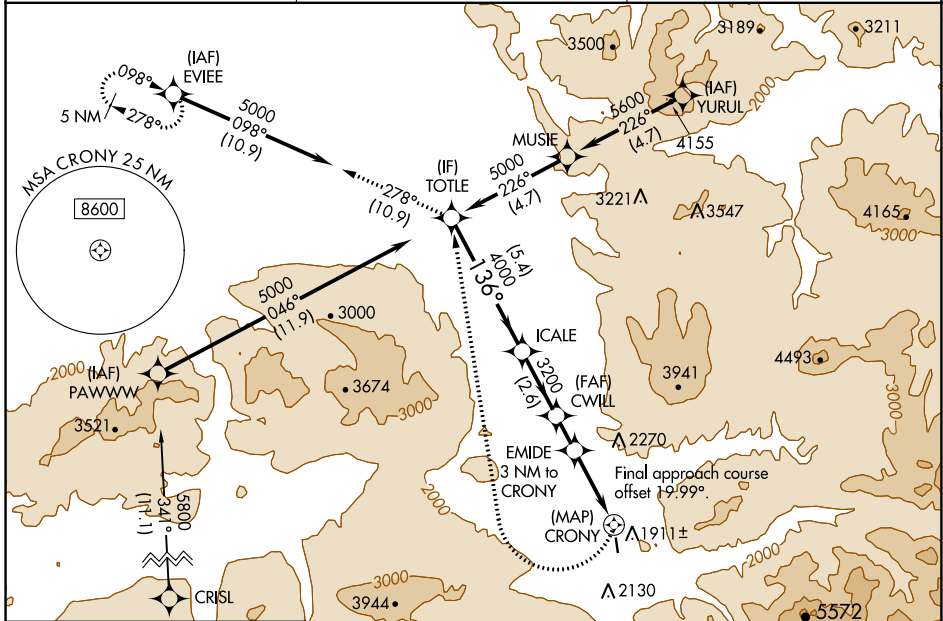
WAAS CH <b>53539</b> <b>W15A</b>	APP CRS <b>136°</b>	Rwy ldg TDZE Apt Elev	<b>2910</b> <b>1275</b> <b>1275</b>
--	------------------------	-----------------------------	---

# RNAV (GPS) RWY 15

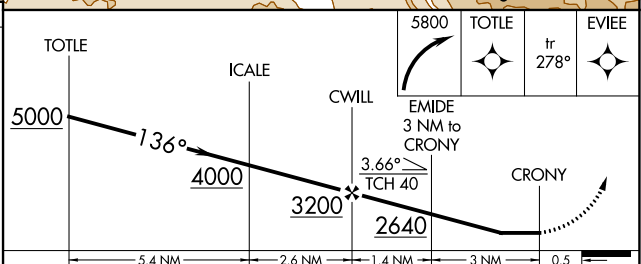
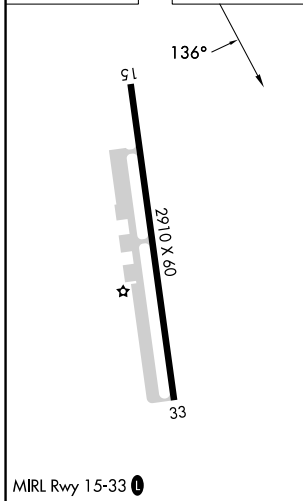
HEALY RIVER (HRR) (PAHV)

RNP APCH - GPS.	MISSED APPROACH: Climbing right turn to 5800 direct TOTLE and on track 278° to EVIEE and hold.
<p>⚠ Circling NA northeast of Rwy 15-33. Procedure NA at night. Use</p> <p>⚠ NA McKinley Park altimeter setting; when not received, procedure</p> <p>❄ -10°C NA. Rwy 15 helicopter visibility reduction below 1 SM NA.</p>	*Missed approach requires minimum climb of 340 feet per NM to 3100.

INR/PAIN AWOS-3P <b>135.75</b>	ANCHORAGE CENTER <b>120.9 319.2</b>	CTAF <b>122.90</b>
-----------------------------------	--	-----------------------



ELEV 1275	TDZE 1275
-----------	-----------



CATEGORY	A	B	C	D
LP MDA*	2100-1 825 (900-1)	2100-1¼ 825 (900-1¼)		NA
LP MDA	2240-1¼ 965 (1000-1¼)	2240-1½ 965 (1000-1½)		NA
LNAV MDA*	2260-1¼ 985 (1000-1¼)	2260-1½ 985 (1000-1½)		NA
LNAV MDA	2560-1¼ 1285 (1300-1¼)	2560-1½ 1285 (1300-1½)		NA
<b>C</b> CIRCLING	2560-1¼ 1285 (1300-1¼)	2560-1½ 1285 (1300-1½)		NA

AK, 26 DEC 2024 to 20 FEB 2025

AK, 26 DEC 2024 to 20 FEB 2025