

APP CRS	Rwy Idg	<b>4500</b>
<b>269°</b>	TDZE	<b>129</b>
	Apt Elev	<b>129</b>

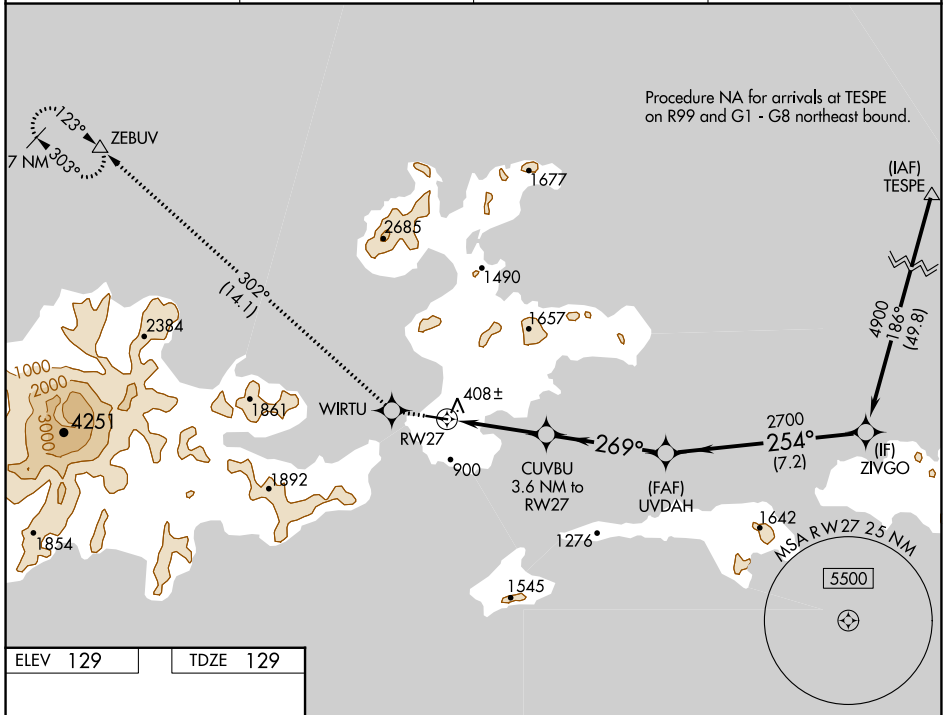
# RNAV (GPS) RWY 27

AKUTAN (7AK)(PAUT)

**⚠** For uncompensated Baro-VNAV systems, LNAV/VNAV NA below -19°C (-2°F) or above 54°C (130°F). DME/DME RNP-0.3 NA. Visibility reduction by helicopters below 1 SM NA. Procedure NA at night.

**MISSED APPROACH:** Climb to 9000 direct WIRTU and on track 302° to ZEBUV and hold, continue climb-in-hold to 9000.

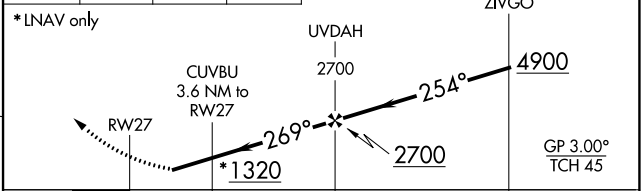
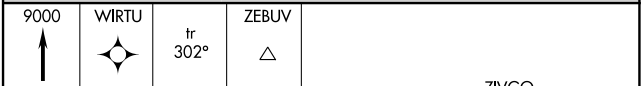
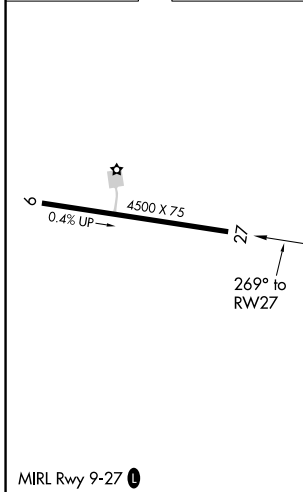
AWOS-3P <b>129.05</b>	ANCHORAGE CENTER <b>121.4</b>	GCO <b>130.3</b>	CTAF <b>122.90</b>
--------------------------	----------------------------------	---------------------	-----------------------



AK, 26 DEC 2024 to 20 FEB 2025

AK, 26 DEC 2024 to 20 FEB 2025

ELEV 129	TDZE 129
----------	----------



	-3.6 NM-		-4.3 NM-		-7.2 NM-		
CATEGORY	A		B		C		D
LNAV/VNAV DA	848-2½		719 (800-2½)				
LNAV MDA	1140-1¼ 1011 (1100-1¼)		1140-1½ 1011 (1100-1½)		1140-3 1011 (1100-3)		
<b>C</b> CIRCLING	1140-1¼ 1011 (1100-1¼)		1200-1½ 1071 (1100-1½)		1600-3 1471 (1500-3)		1960-3 1831 (1900-3)