

APP CRS	Rwy Idg	N/A
009°	TDZE	N/A
	Apt Elev	106

RNAV (GPS)-A

UMATILLA MUNI (X23)

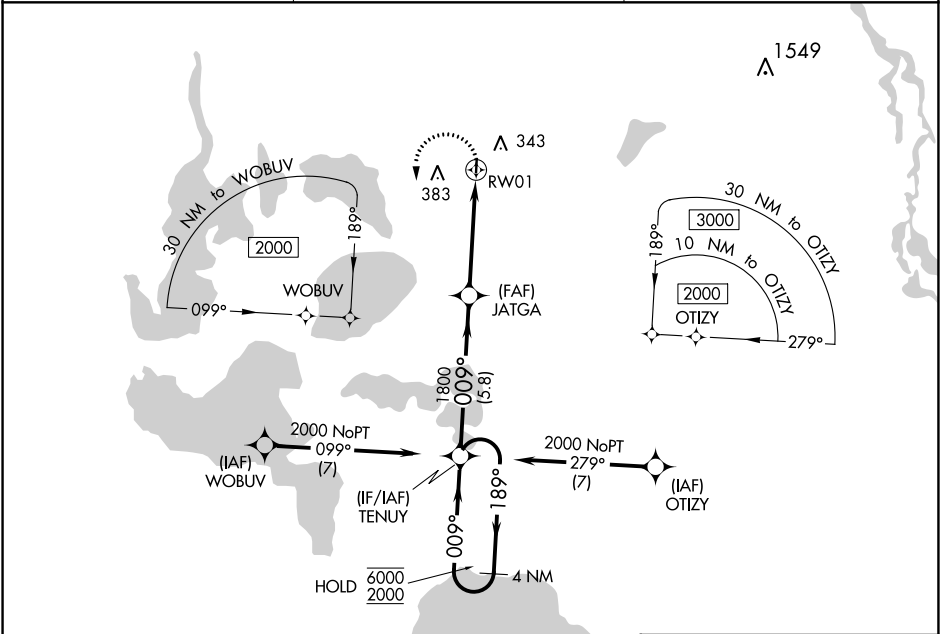
RNP APCH - GPS.

V Procedure NA at night. Rwy 01, 19 helicopter visibility reduction below 1 SM NA.

NA Use Leesburg altimeter setting.

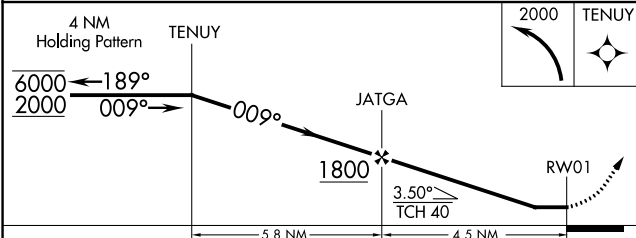
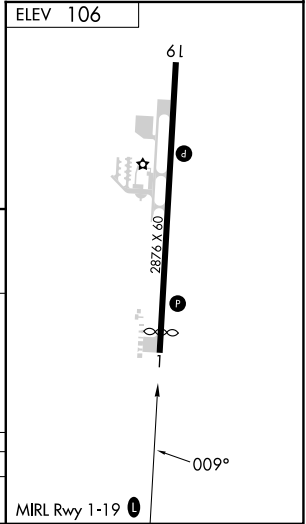
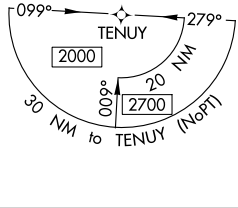
MISSED APPROACH: Climbing left turn to 2000 direct TENUY and hold.

LEE ASOS 134.325	ORLANDO APP CON 135.3 351.9	CTAF 122.9
----------------------------	---------------------------------------	----------------------



SE-3, 26 DEC 2024 to 23 JAN 2025

SE-3, 26 DEC 2024 to 23 JAN 2025



CATEGORY	A	B	C	D
C CIRCLING	760-1 654 (700-1)	780-1 674 (700-1)	NA	