

WAAS CH 93740 W24A	APP CRS 240°	Rwy Idg 6051 TDZE 7913 Apt Elev 7955
---------------------------------	------------------------	---

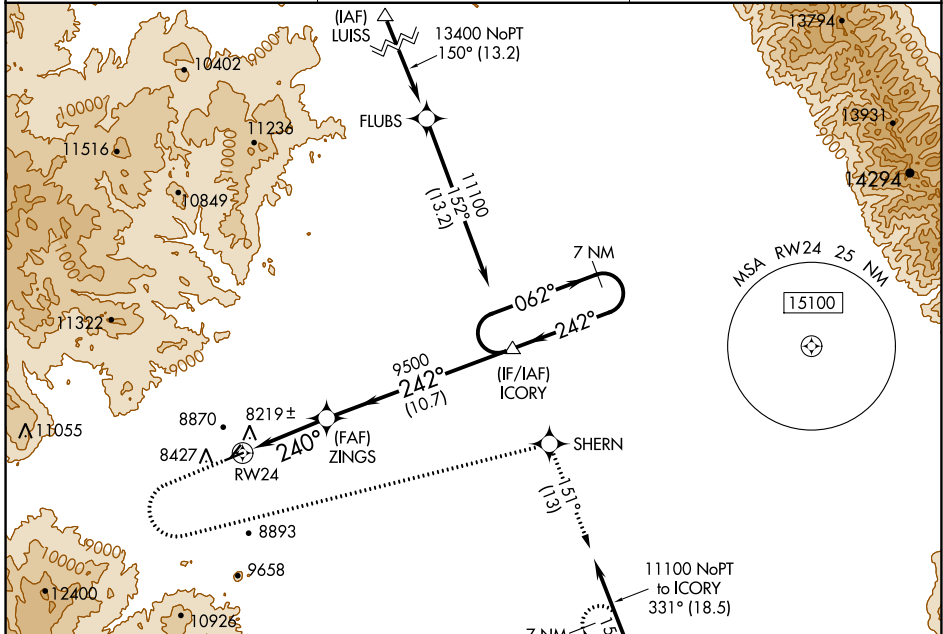
RNAV (GPS) RWY 24

ASTRONAUT KENT ROMINGER (RCV)

⚠ For uncompensated Baro-VNAV systems, LNAV/VNAV NA below -30°C (-22°F) or above 54°C (130°F). Circling NA northwest of Rwy 6-24. Circling Rwy 6 NA at night. DME/DME RNP-0.3 NA. Circling NA to Rwy 3/21.

⚠ MISSED APPROACH: Climb to 8600 then climbing left turn to 11100 direct SHERN and on track 151° to HOMME and hold. #Missed approach requires a minimum climb of 310 feet per NM to 9200.

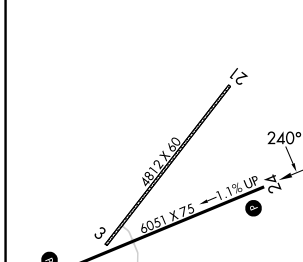
AWOS-3PT 118.275	DENVER CENTER 128.375 379.95	CTAF 122.9
----------------------------	--	----------------------



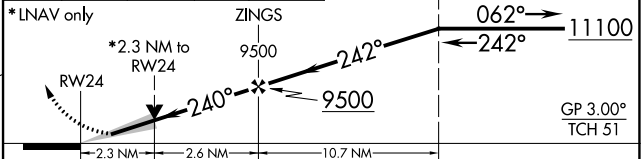
SW-1, 26 DEC 2024 to 23 JAN 2025

SW-1, 26 DEC 2024 to 23 JAN 2025

ELEV 7955	TDZE 7913
-----------	-----------



8600	11100	SHERN	tr 151°	HOMME	VGSI and RNAV glidepath not coincident (VGSI Angle 3.00/TCH 40). 7 NM Holding Pattern
------	-------	-------	---------	-------	--



CATEGORY	A	B	C	D
LPV DA #	8163-1	250 (300-1)		NA
LPV DA	8220-1 1/8	307 (300-1 1/8)		NA
LNAV/VNAV DA	8443-1 7/8	530 (500-1 7/8)		NA
LNAV MDA	8680-1 767 (800-1)	8680-1 1/4 767 (800-1 1/4)		NA
C CIRCLING	8700-1 745 (800-1)	8840-1 1/4 885 (900-1 1/4)		NA