

COPTER RNAV (GPS) RWY 24

APCH CRS	Rwy Idg	6668
244°	TDZE	16
	Arprt Elev	16

[USA]

BUCHOLZ AAF (PKWA)

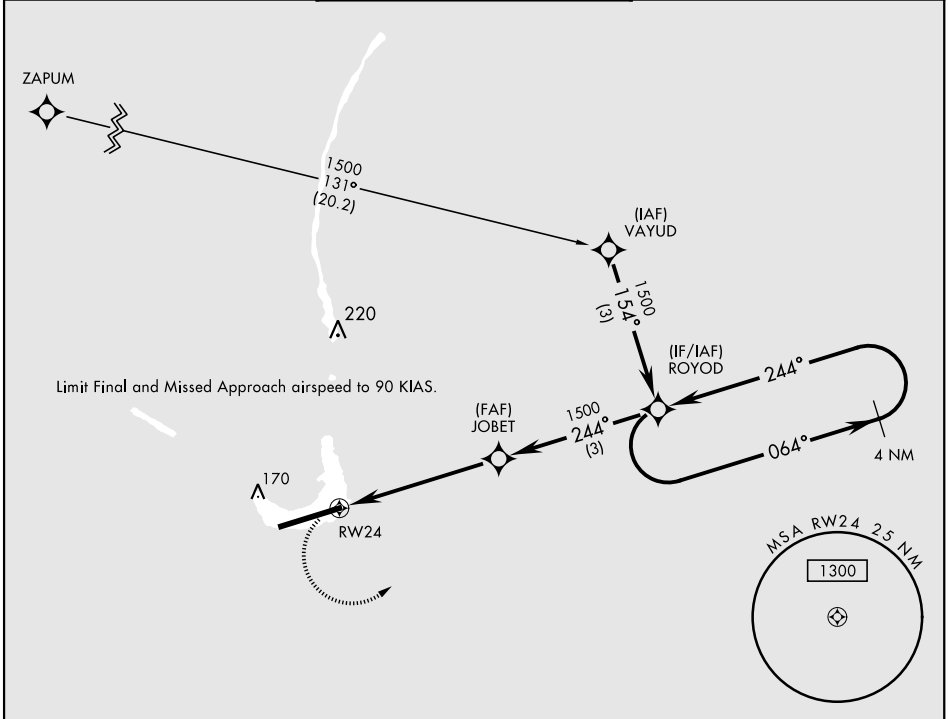
▼ When control tower closed, obtain local altimeter setting from Base Ops on 118.8.
DME/DME RNP-0.3 NA

MISSED APPROACH: Climbing left turn to 1500 direct ROYOD and hold.

AWOS
119.675

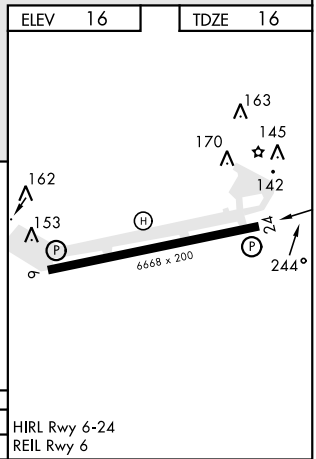
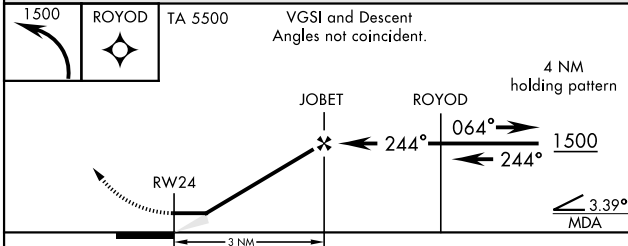
TOWER ★
126.2 360.2

GND CON
121.9



PAC, 26 DEC 2024 to 20 FEB 2025

PAC, 26 DEC 2024 to 20 FEB 2025



CATEGORY	COPTER			HIRL Rwy 6-24
LNNAV MDA	440-1/2	424	(500-1/2)	REL Rwy 6

COPTER RNAV (GPS) RWY 24