

KWAJALEIN USAKA, MARSHALL I

# COPTER RNAV (GPS) RWY 6

APCH CRS	Rwy Idg	<b>6668</b>
<b>064°</b>	TDZE	<b>16</b>
	Arpt Elev	<b>16</b>

[USA]

BUCHOLZ AAF (PKWA)

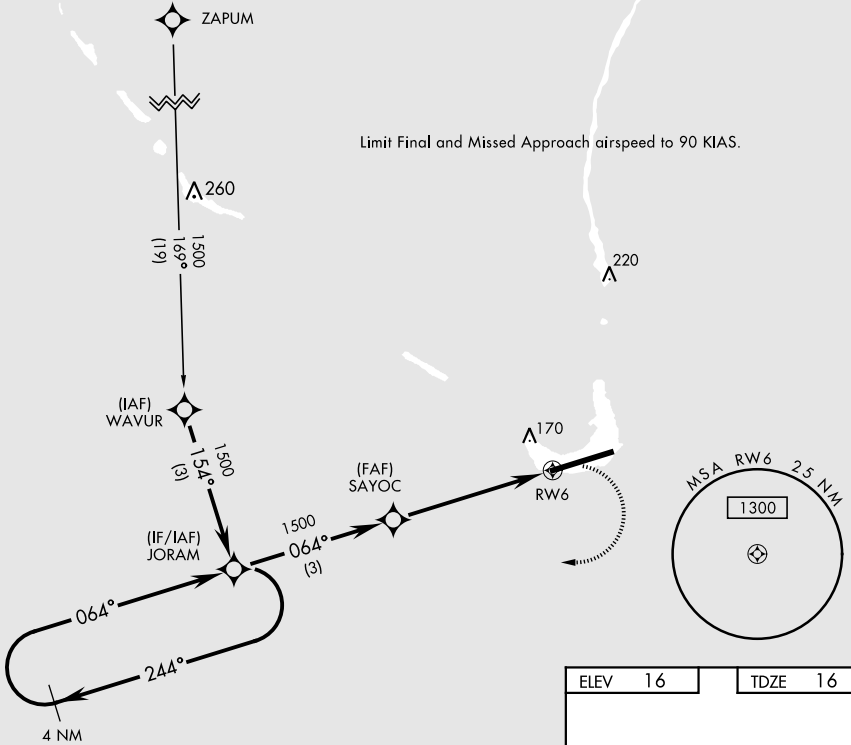
**▼** When control tower closed, obtain local altimeter setting from Base Ops on 118.8.  
DME/DME RNP-0.3 NA

**MISSED APPROACH:** Climbing right turn to 1500 direct JORAM and hold.

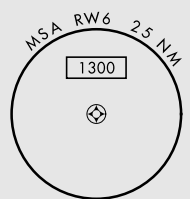
AWOS  
**119.675**

TOWER ★  
**126.2 360.2**

GND CON  
**121.9**



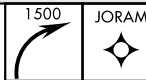
Limit Final and Missed Approach airspeed to 90 KIAS.



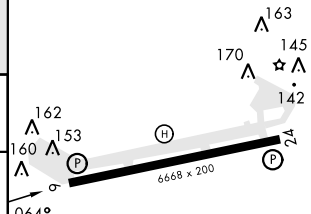
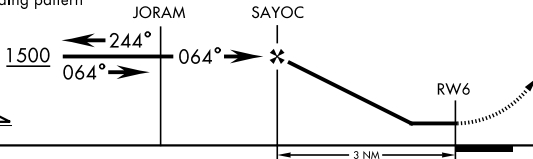
ELEV	16	TDZE	16
------	----	------	----

VGSI and Descent Angles not coincident.

TA 5500



4 NM holding pattern



CATEGORY	COPTER		
LNAV MDA	480-1/2	464	(500-1/2)

REIL Rwy 6  
HIRL Rwy 6-24

KWAJALEIN USAKA, MARSHALL I

08° 43' N-167° 44' E

BUCHOLZ AAF (PKWA)

Amdt 1 05JAN17

# COPTER RNAV (GPS) RWY 6

PAC, 26 DEC 2024 to 20 FEB 2025

PAC, 26 DEC 2024 to 20 FEB 2025