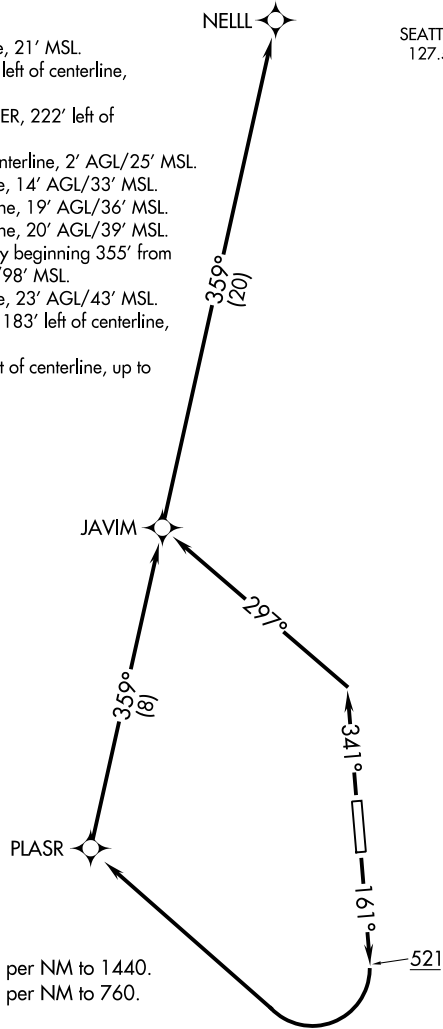


AWOS-3
118.15
SEATTLE CENTER
127.55 254.35
CTAF
122.8

TAKEOFF OBSTACLE NOTES

Rwy 16: Terrain 1' from DER, 198' left of centerline, 21' MSL.
Poles, sign beginning 12' from DER, 134' left of centerline, up to 34' AGL/58' MSL.
Pole, trees, building beginning 25' from DER, 222' left of centerline, up to 36' AGL/67' MSL.
Vegetation 34' from DER, 486' right of centerline, 2' AGL/25' MSL.
Tree 86' from DER, 290' right of centerline, 14' AGL/33' MSL.
Tree 229' from DER, 163' right of centerline, 19' AGL/36' MSL.
Tree 249' from DER, 260' right of centerline, 20' AGL/39' MSL.
Trees, terrain, pole, building, general utility beginning 355' from DER, 62' left of centerline, up to 69' AGL/98' MSL.
Tree 886' from DER, 16' right of centerline, 23' AGL/43' MSL.
Trees, building beginning 979' from DER, 183' left of centerline, up to 53' AGL/99' MSL.
Trees beginning 1275' from DER, 185' left of centerline, up to 62' AGL/111' MSL.



NOTE: GPS required.
NOTE: RNAV 1.

TAKEOFF MINIMUMS

Rwy 16: 600-1¼ with minimum climb of 440' per NM to 1440.
Rwy 34: 700-1¾ with minimum climb of 320' per NM to 760.

(NOTES CONTINUED ON FOLLOWING PAGE)

NOTE: Chart not to scale.

DEPARTURE ROUTE DESCRIPTION

TAKEOFF RUNWAY 16: Climb on heading 161° to 521, then climbing right turn direct PLASR, then right turn on track 359° to JAVIM, then on track 359° to NELL, thence. . . .

TAKEOFF RUNWAY 34: Climb on heading 341° to intercept course 297° to JAVIM, then climbing right turn on track 359° to NELL, thence. . . .

. . . .on assigned route, expect clearance to filed altitude within 10 minutes after departure.

TAKEOFF OBSTACLE NOTES (CONT.)

Rwy 16: Trees beginning 2644' from DER, 199' left of centerline, up to 93' AGL/141' MSL.
 Trees, building beginning 2763' from DER, 180' left of centerline, up to 98' AGL/145' MSL.
 Tree 3148' from DER, 853' left of centerline, 89' AGL/173' MSL.
 Trees beginning 3181' from DER, 883' left of centerline, up to 58' AGL/192' MSL.
 Trees beginning 3296' from DER, 956' left of centerline, up to 68' AGL/243' MSL.
 Trees beginning 3356' from DER, 900' left of centerline, up to 105' AGL/252' MSL.
 Trees beginning 3556' from DER, 760' left of centerline, up to 50' AGL/333' MSL.
 Tree 3686' from DER, 1179' left of centerline, 114' AGL/347' MSL.
 Trees, poles beginning 3698' from DER, 275' left of centerline, up to 87' AGL/392' MSL.
 Trees beginning 4184' from DER, 171' left of centerline, up to 1144' AGL/523' MSL.
 Pole, trees, terrain, vegetation beginning 5445' from DER, 23' left of centerline, up to 109' AGL/560' MSL.
 Terrain 1.9 NM from DER, 2' right of centerline, 200' AGL/328' MSL.
 Terrain 2 NM from DER, 26' right of centerline, 200' AGL/342' MSL.
 Terrain 2.1 NM from DER, 76' right of centerline, 200' AGL/351' MSL.
 Terrain 2.2 NM from DER, 126' right of centerline, 200' AGL/365' MSL.
 Terrain 2.4 NM from DER, on centerline, 200' AGL/414' MSL.
 Terrain 2.5 NM from DER, 50' right of centerline, 200' AGL/430' MSL.
 Terrain, trees beginning 2.5 NM from DER, 149' left of centerline, up to 578' MSL.
 Terrain, trees beginning 2.5 NM from DER, 1046' left of centerline, up to 601' MSL.

Rwy 34: Fence, poles beginning 7' from DER, 157' left of centerline, up to 8' AGL/28' MSL.
 Pole 15' from DER, 318' right of centerline, 25' AGL/44' MSL.
 Poles, building, vegetation beginning 149' from DER, 17' left of centerline, up to 15' AGL/36' MSL.
 Building 2582' from DER, 159' right of centerline, 29' AGL/91' MSL.
 Building 2775' from DER, 139' right of centerline, 30' AGL/115' MSL.
 Trees beginning 2795' from DER, 21' right of centerline, up to 53' AGL/119' MSL.
 Trees beginning 2836' from DER, 65' left of centerline, up to 48' AGL/106' MSL.
 Tree 2900' from DER, 201' right of centerline, 50' AGL/134' MSL.
 Trees beginning 2941' from DER, 43' right of centerline, up to 32' AGL/136' MSL.
 Pole 2993' from DER, 10' left of centerline, 30' AGL/125' MSL.
 Trees beginning 3003' from DER, 2' left of centerline, up to 50' AGL/151' MSL.
 Pole, trees beginning 3163' from DER, 139' right of centerline, up to 40' AGL/143' MSL.
 Trees beginning 3250' from DER, 10' right of centerline, 60' AGL/157' MSL.
 Trees, terrain beginning 3265' from DER, 112' right of centerline, up to 42' AGL/155' MSL.
 Trees beginning 3399' from DER, 206' right of centerline, up to 37' AGL/171' MSL.
 Trees, building beginning 3483' from DER, 176' right of centerline, up to 48' AGL/194' MSL.
 Tree 3496' from DER, 1' left of centerline, 46' AGL/175' MSL.
 Trees, building, pole, terrain, vegetation beginning 3511' from DER, 2' left of centerline, up to 73' AGL/204' MSL.
 Trees, vegetation beginning 3523' from DER, 153' right of centerline, up to 65' AGL/229' MSL.
 Tree 3721' from DER, 1391' right of centerline, 29' AGL/238' MSL.
 Tree 3770' from DER, 298' right of centerline, 57' AGL/242' MSL.
 Trees, pole, building beginning 3787' from DER, 10' left of centerline, up to 79' AGL/213' MSL.
 Trees, terrain beginning 3792' from DER, 251' right of centerline, up to 64' AGL/282' MSL.
 Trees, building beginning 3920' from DER, 194' right of centerline, up to 108' AGL/327' MSL.
 Tree 4067' from DER, 882' right of centerline, 85' AGL/341' MSL.
 Trees beginning 4085' from DER, 385' right of centerline, up to 81' AGL/342' MSL.
 Tree 4106' from DER, 197' right of centerline, 92' AGL/354' MSL.
 Trees beginning 4188' from DER, 180' right of centerline, up to 101' AGL/355' MSL.
 Trees beginning 4249' from DER, 391' right of centerline, up to 93' AGL/361' MSL.
 Trees beginning 4294' from DER, 157' right of centerline, up to 134' AGL/367' MSL.
 Trees beginning 4335' from DER, 492' right of centerline, up to 127' AGL/379' MSL.
 Trees beginning 4403' from DER, 177' right of centerline, up to 138' AGL/383' MSL.
 Trees, building, terrain, beginning 4562' from DER, 100' right of centerline, up to 93' AGL/401' MSL.
 Trees beginning 4972' from DER, 381' right of centerline, up to 112' AGL/509' MSL.
 Trees beginning 5091' from DER, 585' right of centerline, up to 125' AGL/534' MSL.
 Trees, terrain beginning 5114' from DER, 146' right of centerline, up to 118' AGL/547' MSL.
 Tree 5342' from DER, 1390' right of centerline, 111' AGL/573' MSL.
 Trees beginning 5378' from DER, 794' right of centerline, up to 124' AGL/586' MSL.
 Trees beginning 5482' from DER, 194' right of centerline, up to 123' AGL/588' MSL.
 Trees beginning 5543' from DER, 183' right of centerline, up to 114' AGL/625' MSL.
 Trees, terrain, vegetation beginning 5629' from DER, 197' right of centerline, up to 115' AGL/628' MSL.

NW-1, 26 DEC 2024 to 23 JAN 2025

NW-1, 26 DEC 2024 to 23 JAN 2025