

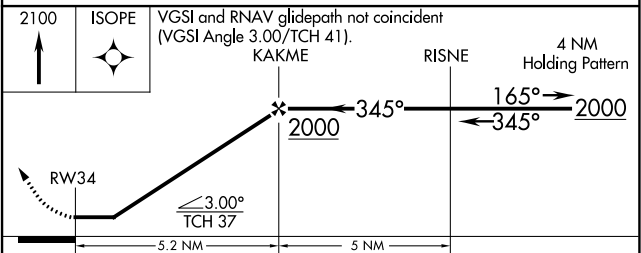
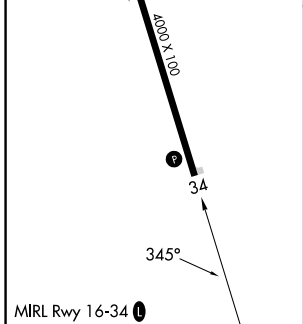
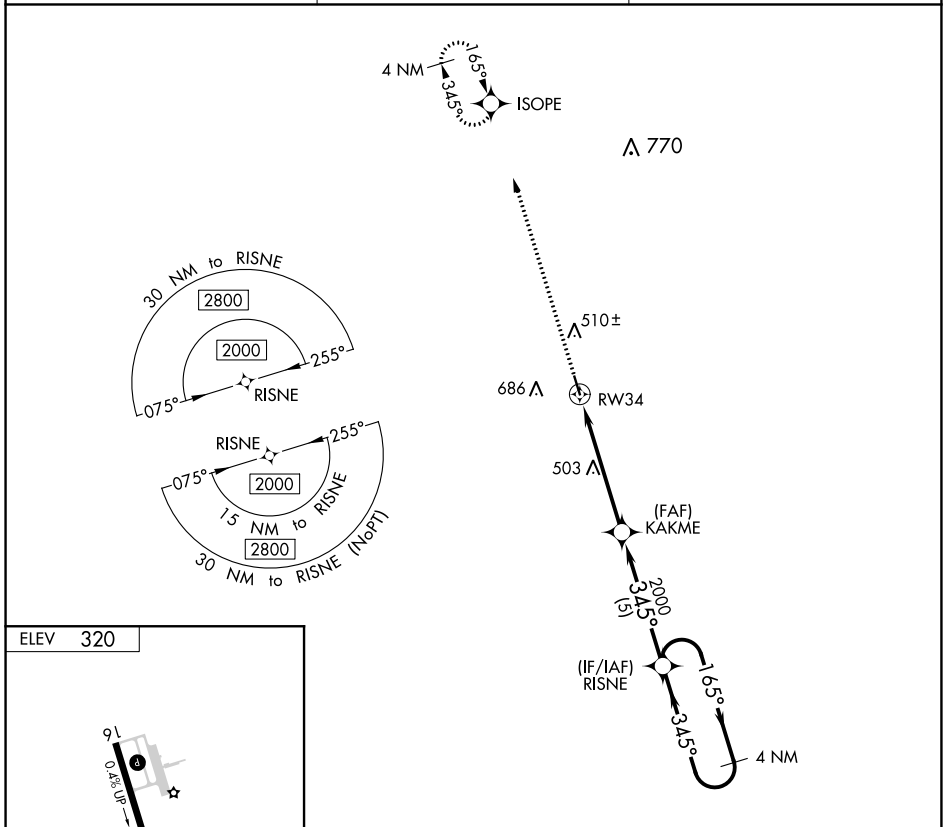
APP CRS	Rwy Idg	N/A
345°	TDZE	N/A
	Apt Elev	320

RNAV (GPS)-B

POPLARVILLE/PEARL RIVER COUNTY (M13)

RNP APCH-GPS.	<p>▼ Use Bogalusa altimeter setting; when not received, use Hattiesburg altimeter setting and increase all MDA 40 feet and increase Circling Cat B/C/D visibility ¼ mile. Helicopter visibility reduction below 1 SM NA. Procedure NA at night.</p> <p>▲ NA</p>	MISSED APPROACH: Climb to 2100 direct ISOPE and hold.
---------------	---	---

BXA AWOS-3PT 118.025	GULFPORT APP CON ★ 124.6 354.1	CTAF 122.9 0
--------------------------------	--	------------------------



CATEGORY	A	B	C	D
C CIRCLING	880-1 560 (600-1)	1120-1 800 (800-1)	1120-2¼ 800 (800-2¼)	1120-2½ 800 (800-2½)

SC-4, 26 DEC 2024 to 23 JAN 2025

SC-4, 26 DEC 2024 to 23 JAN 2025